

INST# 011596

83 PAGE 61

NOW OR FORMERLY
COLLEGE OF WILLIAM & MARY

IRON BOUND

(APPROX. R/W)



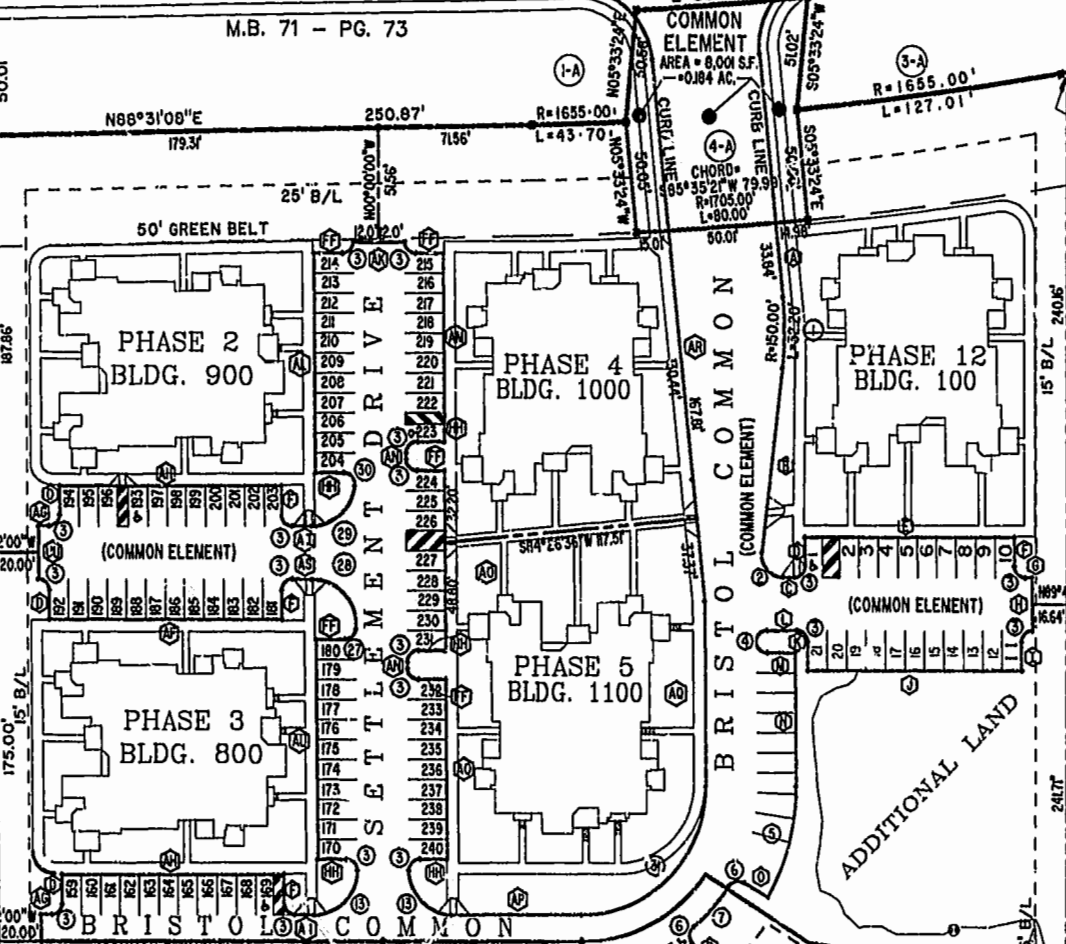
ROAD

M.B. 71 - PG. 73

T.P. 372-(0A)-00-028
NOW OR FORMERLY
JEROME & EVELYN RANDOLPH
(D.B. 30, PG. 470)
ZONE: RM-2

T.P. 372-(0A)-00-030
NOW OR FORMERLY
JEROME & EVELYN RANDOLPH
(D.B. 37, PG. 379)
ZONE: RM-2

T.P. 372-(05)-00-061
NOW OR FORMERLY
CHESAPEAKE MEDIA, INC.
(D.B. 74, PG. 121)
(M.B. 42, PG. 25)
ZONE: B-2 CONDITIONAL



MATCH LINE
SEE SHEET 3
40' R/W
ROLAND STREET

MATCH LINE
SEE SHEET 3

PHASE 6
SEE SHEET 3

PHASE 10
SEE SHEET 3



City of Williamsburg & County of James City
Circuit Court: This PLAT was recorded on
19 Oct 2001
at 12:18 PM, PB 83, PG. 67-63
DOCUMENT # 011596
Betsy B. Woolridge, Clerk

BRISTOL COMMONS
A CONDOMINIUM COMMUNITY
PHASE TEN
FOR
KEY GROUP, LLC
CITY OF WILLIAMSBURG, VIRGINIA

Hassell & Folkes, P.C. Engineers Surveyors Planners Chesapeake, VA 23320 (757) 547-9531	SIZE C	CONTRACT NO 98062	DISK/BOX 123L/15	FILENAME BRISTOL10.DWG	REV.
SCALE: 1"=50'		DATE: 09/20/01		SHEET 2 of 4	