

CURVE DATA

NUMBER	DELTA	RADIUS	LENGTH	TANGENT	CHORD	CH. BEARING
C1	20°25'20"	924.93	329.68	166.61	327.93	S48°52'05"W

PLAT OF BOUNDARY LINE ADJUSTMENT AND BOUNDARY LINE VACATION BETWEEN PROPERTIES OWNED BY WILLIAM M. PETTITT, JR. ET ALS, TRUSTEES AND WILLIAMSBURG POTTERY FACTORY, INC. BRUTON DISTRICT, COUNTY OF YORK, VIRGINIA  
 DATE: 2/28/01 SCALE: 1"=200' JOB NO. 9027



5248 Old Towne Road, Suite 1  
 Williamsburg, Virginia 23188  
 (757) 263-0040  
 Fax (757) 220-8994

SHEET NO. 2 OF 2

REVISED: JUNE 21, 2001  
 REVISED: SEPTEMBER 10, 2001

LINE TABLE

NUMBER	BEARING	DISTANCE
L1	S44°59'25"W	86.15'
L2	S36°59'21"W	205.06'
L3	S32°42'38"W	100.12'
L4	S35°34'23"W	75.00'
L5	S35°42'14"W	65.18'
L6	S13°49'59"W	50.07'
L7	S26°23'43"W	1.65'
L8	S54°30'19"W	25.34'
L9	S47°44'41"E	69.01'
L10	S83°41'53"E	131.02'
L11	S41°38'10"E	120.24'

- REFERENCES:  
 DEED BOOK 262, PAGE 510  
 DEED BOOK 464, PAGE 189  
 DEED BOOK 466, PAGE 189  
 DEED BOOK 506, PAGE 721  
 DEED BOOK 538, PAGE 841  
 DEED BOOK 570, PAGE 585  
 DEED BOOK 602, PAGE 124  
 DEED BOOK 852, PAGE 890  
 PLAT BOOK 9, PAGE 602  
 PLAT BOOK 12, PAGE 267  
 PLAT BOOK 35, PAGE 5A (J.C.CO.)  
 V.D.O.T. PROJECT #0646-099-154, M-501  
 SHEETS #2, 3 & 4

City of Williamsburg & County of James City Circuit Court. This PLAT was recorded on 12/01/01 at 12:09 PM, P.B. 83, PG. 53-A DOCUMENT # 010018459 BETSY B. WOOLRIDGE, CLERK

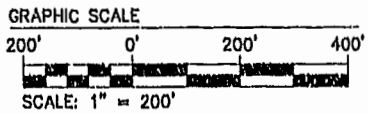
APPROVED: YORK COUNTY BOARD OF SUPERVISORS

BY: Al Maddalena, PLAT APPROVING AGENT  
 DATE: 10/11/01

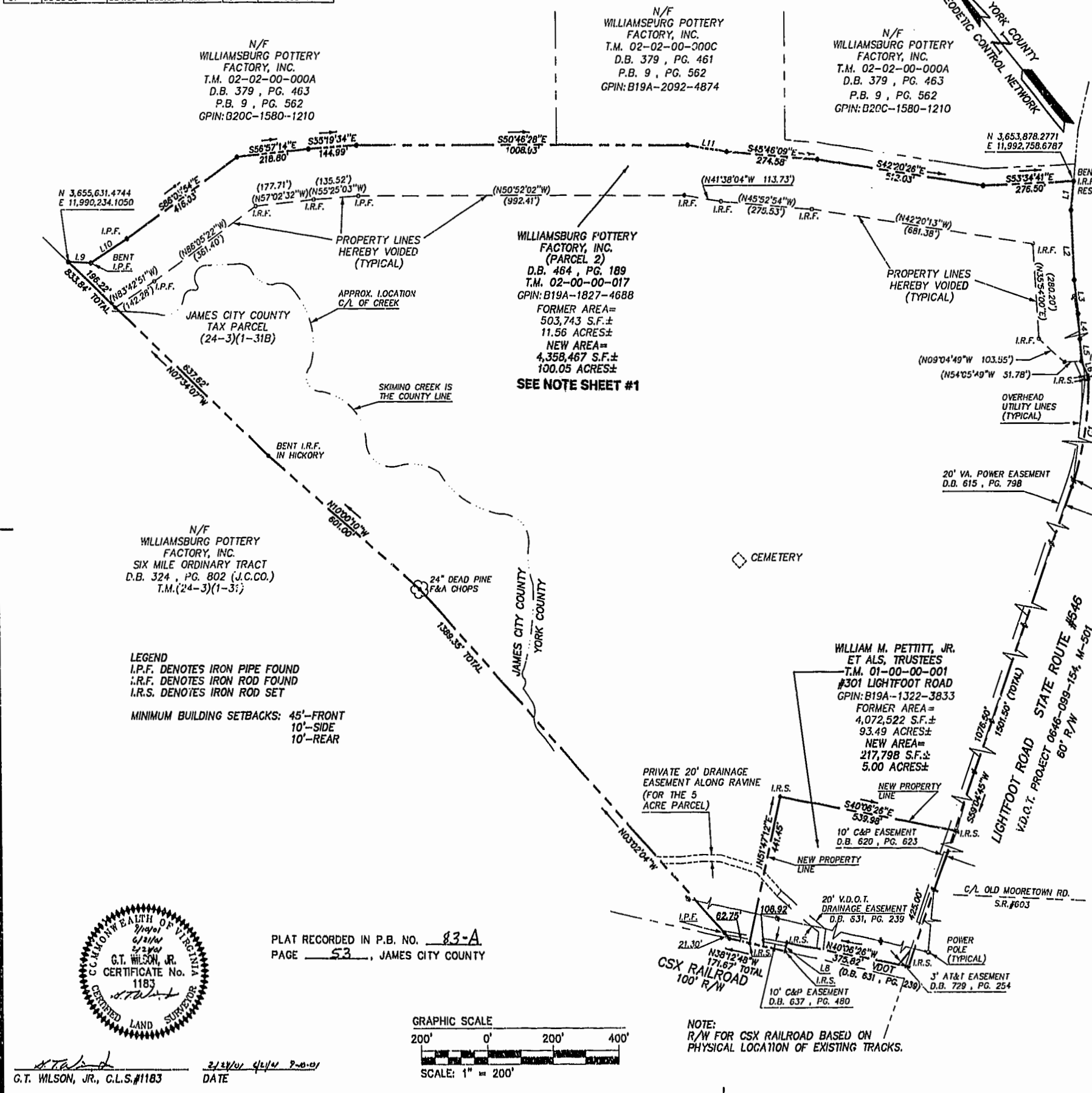
STATE OF VIRGINIA COUNTY OF YORK  
 IN THE CLERK'S OFFICE OF THE CIRCUIT COURT FOR THE COUNTY OF YORK THE 12th DAY OF October, 2001.  
 THIS MAP WAS PRESENTED AND ADMITTED TO RECORD AS THE LAW DIRECTS, PLAT BOOK 83, PAGE 53-A @ 12:09  
 TESTE: Betsy B. Woolridge, CLERK OF CIRCUIT COURT, CLERK  
 BY: Betsy B. Woolridge



PLAT RECORDED IN P.B. NO. 83-A  
 PAGE 53, JAMES CITY COUNTY



NOTE: R/W FOR CSX RAILROAD BASED ON PHYSICAL LOCATION OF EXISTING TRACKS.



30270F01.DWG 07.12.01-09:41