

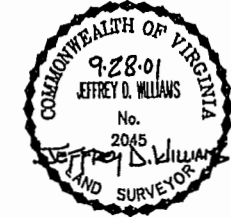
EXHIBIT B-9
SUPPLEMENTAL CONDOMINIUM PLAT
OF
WYNDHAM PLANTATION
CONDOMINIUM

WILLIAMSBURG, VIRGINIA
SCALE: 1"=100' SEPTEMBER 26, 2001
JOHN E. SIRINE AND ASSOCIATES, LTD.
SURVEYORS • ENGINEERS • PLANNERS
VIRGINIA BEACH, VIRGINIA
(757) 486-4910

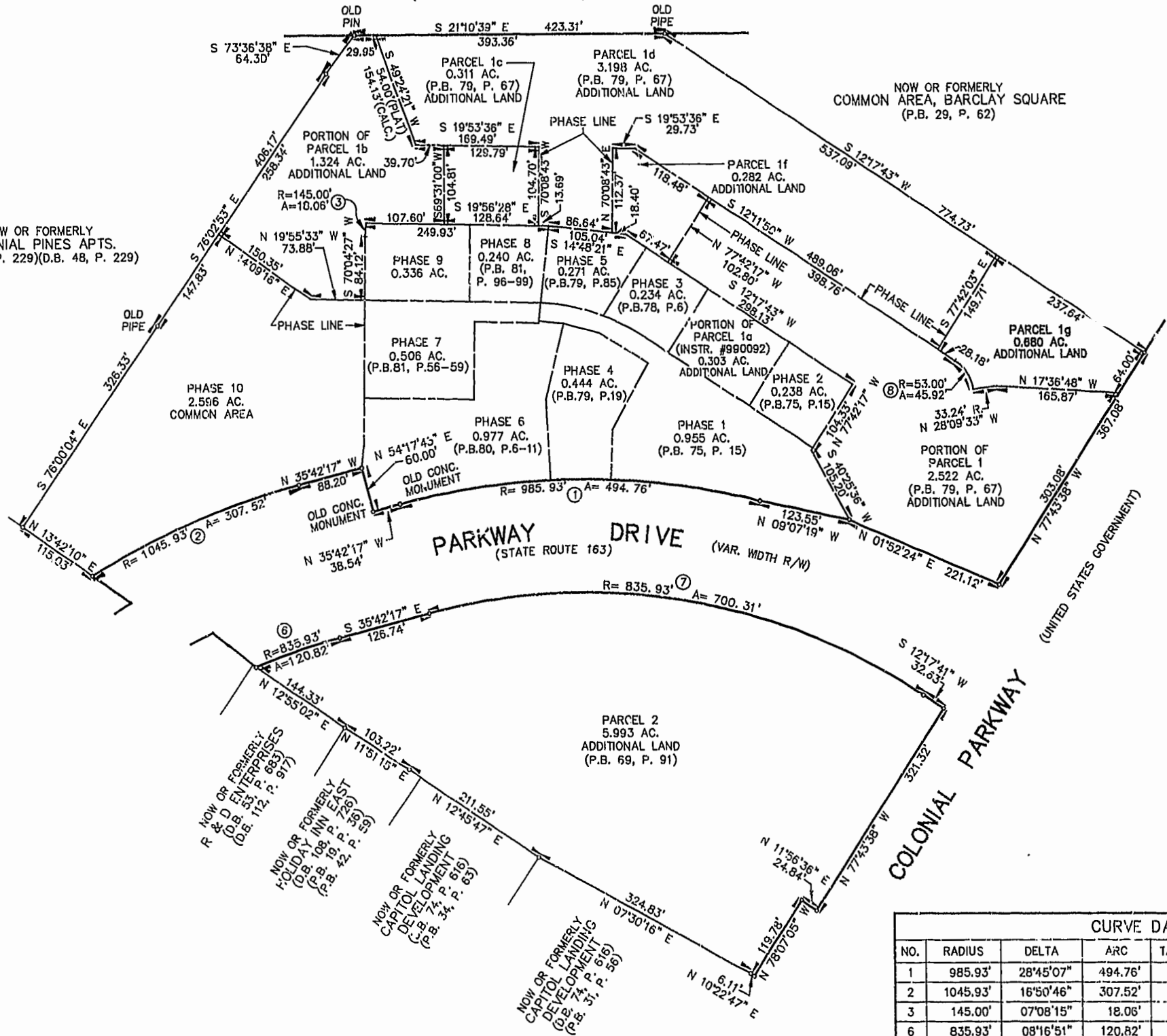
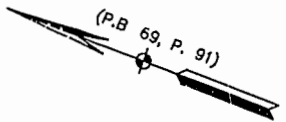
MERRIMAC TRAIL
(STATE ROUTE 143)
(FORMERLY STATE ROUTE 168)

THE UNDERSIGNED CERTIFIES THAT THIS PLAT IS ACCURATE AND COMPLIES WITH THE PROVISIONS OF CODE OF VIRGINIA, SECTION 55-79.58.A AND THAT ALL UNITS OR PORTIONS THEREOF DEPICTED HEREON AND ALL COMMON ELEMENTS HAVE BEEN SUBSTANTIALLY COMPLETED, UNLESS OTHERWISE NOTED.

SIGNED: Jeffrey D. Williams
JEFFREY D. WILLIAMS, L.S.



NOW OR FORMERLY
COLONIAL PINES APTS.
(D.B. 44, P. 229)(D.B. 48, P. 229)



City of Williamsburg & County of James City
Circuit Court: This PLAT was recorded on
October 5, 2001
at 11:33 AM, PB 83, PG 50
DOCUMENT # 011526
BETSY B. WOOLRIDGE, CLERK
Betsy B. Woolridge Dep. Clerk

| CURVE DATA | | | | | | |
|------------|----------|-----------|---------|---------|---------|---------------|
| NO. | RADIUS | DELTA | ARC | TANGENT | CHORD | CHORD BEARING |
| 1 | 985.93' | 28°45'07" | 494.76' | 252.70' | 489.58' | N 21°19'43" W |
| 2 | 1045.93' | 16°50'46" | 307.52' | 154.88' | 306.42' | N 44°07'40" W |
| 3 | 145.00' | 07°08'15" | 18.06' | 9.04' | 18.05' | N 73°38'34" E |
| 6 | 835.93' | 08°16'51" | 120.82' | 60.51' | 120.71' | S 39°50'42" E |
| 7 | 835.93' | 48°00'00" | 700.31' | 372.18' | 680.01' | S 11°42'18" E |
| 8 | 53.00' | 49°38'37" | 45.92' | 24.51' | 44.50' | N 37°01'09" E |

