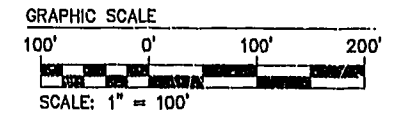


CURVE TABLE						
CURVE	DELTA	RADIUS	ARC	TANGENT	CHORD	CHORD BEARING
1A	3°02'11"	370.00	19.61	9.31	19.60	S69°18'28"E
1B	7°14'30"	240.00	30.33	15.19	30.31	S71°24'21"E
2	21°27'19"	240.00	89.87	45.47	89.35	S85°45'15"E
3	20°52'54"	240.00	87.47	44.22	86.99	N73°04'38"E
4	19°28'14"	240.00	81.56	41.18	81.17	N52°54'04"E
5	1°49'09"	240.00	7.62	3.81	7.62	N42°15'23"E
7	43°11'59"	225.00	169.64	89.00	165.65	N62°56'47"E
8A	31°35'50"	225.00	124.08	63.66	122.52	S79°39'18"E
8B	50°12'29"	25.00	21.91	11.71	21.21	S38°45'08"E
8C	21°19'05"	50.00	18.60	9.41	18.50	S24°18'26"E
9	60°30'00"	50.00	52.34	28.07	50.00	N84°58'00"E
10	30°00'00"	50.00	26.18	13.40	25.88	N39°58'00"E
11	43°08'27"	50.00	37.65	19.77	36.76	N03°23'47"E
12	56°06'36"	50.00	48.97	26.65	47.03	N46°13'45"W
13A	35°42'00"	50.00	31.15	16.10	30.65	S87°51'57"W
13B	46°48'29"	25.00	20.42	10.82	19.86	N86°34'49"W
13C	11°06'29"	275.00	53.31	26.74	53.23	N68°43'49"W
14	18°33'55"	275.00	89.11	44.95	88.72	N93°34'00"W
15	18°33'54"	275.00	89.11	44.95	88.72	S77°52'05"W
16	7°17'44"	275.00	35.02	17.53	34.99	S44°59'40"W
17	28°12'53"	190.00	93.56	47.75	92.62	S55°27'10"W
18	42°38'56"	190.00	141.43	74.17	138.19	N89°06'51"W
19	7°42'43"	420.00	56.53	28.31	56.49	N71°38'45"W
20	16°25'45"	370.00	106.09	53.41	105.73	N48°18'47"E
21A	8°13'37"	370.00	53.13	25.61	53.08	N35°59'05"E
21B	8°22'20"	380.00	55.53	27.81	55.48	N36°03'27"E
22	16°27'29"	380.00	109.15	54.96	103.78	N48°28'22"E
23A	49°20'04"	25.00	21.53	11.48	20.87	N81°22'08"E
23B	65°39'02"	50.00	57.29	32.25	54.21	N73°12'39"E
24	30°52'11"	50.00	26.94	13.81	26.61	N24°57'03"E
25	26°23'34"	50.00	23.06	11.74	22.86	N03°41'50"W
26	28°38'52"	50.00	25.00	12.77	24.74	N31°14'03"W
27	34°23'33"	50.00	30.01	15.47	29.56	N62°45'15"W
28	70°14'21"	50.00	61.30	35.17	57.53	S64°55'48"W
29A	20°08'15"	50.00	17.57	8.88	17.48	S19°44'30"W
29B	47°16'56"	25.00	20.63	10.94	20.05	S33°18'50"W
29C	10°24'04"	430.00	78.06	39.14	77.95	S51°45'16"W
30A	14°40'57"	430.00	110.19	55.40	109.89	S39°12'45"W
30B	00°54'03"	320.00	5.03	2.52	5.03	S32°19'18"W
31	26°24'23"	320.00	147.48	75.07	146.18	S45°58'32"W
32A	16°36'17"	375.00	108.68	54.72	108.30	S07°19'42"E
32B	13°49'06"	275.00	66.32	33.32	66.16	S22°32'33"E
33	13°20'20"	275.00	64.02	32.16	63.88	S36°07'06"E
34	8°52'05"	325.00	38.96	19.50	38.93	N39°21'13"W

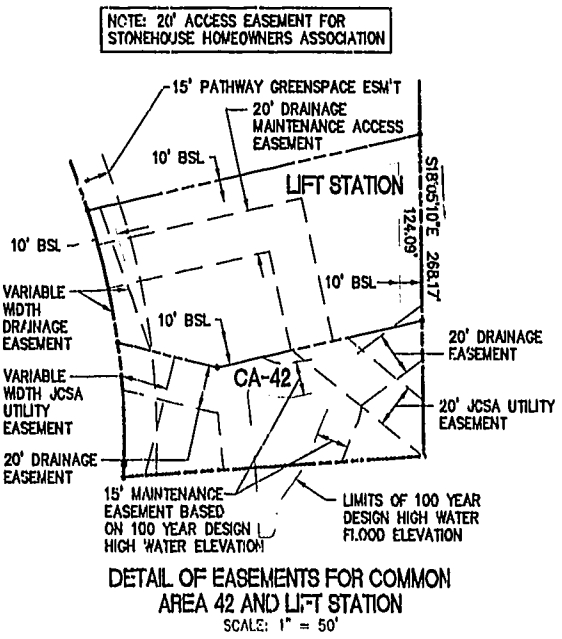
LINE TABLE		
LINE	BEARING	LENGTH
L1	S57°50'22"E	89.55
L2	S36°20'47"W	60.16
L3	S06°03'39"W	54.17
L4	S30°11'20"E	46.26
L5	S66°32'33"E	33.83
L6	S43°49'01"E	27.71
L7	S38°24'41"E	27.60
L8	S64°35'39"E	45.64
L9	S36°15'26"E	15.18
L10	S15°08'06"W	31.29
L11	S07°E 37"E	14.83
L12	N83°08'32"E	44.39
L13	S54°21'59"E	46.21
L14	S63°25'36"E	18.25
L15	N86°11'10"E	30.69
L16	S73°18'14"E	46.87
L17	S89°30'58"E	47.76
L18	S60°57'02"E	21.02
L19	S31°37'24"E	18.69
L20	S18°52'59"E	32.77
L21	S30°05'55"E	17.92
L22	S44°14'56"E	21.65
L23	S54°06'57"E	76.58
L24	S46°44'15"E	29.16
L25	N75°10'08"E	59.76
L26	S79°38'26"W	22.62
L27	S79°24'24"W	74.77
L28	S71°16'41"W	48.14
L29	S54°06'57"E	71.97
L30	S44°14'56"E	32.17
L31	S30°05'55"E	29.04
L32	S18°52'59"E	29.69
L33	S89°30'58"E	96.80
L34	S63°25'36"E	58.33
L35	S54°21'59"E	30.74
L36	N83°08'32"E	74.01
L37	S07°57'07"E	74.09
L38	S15°08'06"W	7.07
L39	S54°34'54"E	116.91
L40	S30°11'20"E	79.04
L41	S06°03'39"W	84.07
L42	S36°20'47"W	19.90
L43	S57°50'22"E	41.84



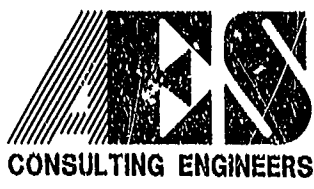
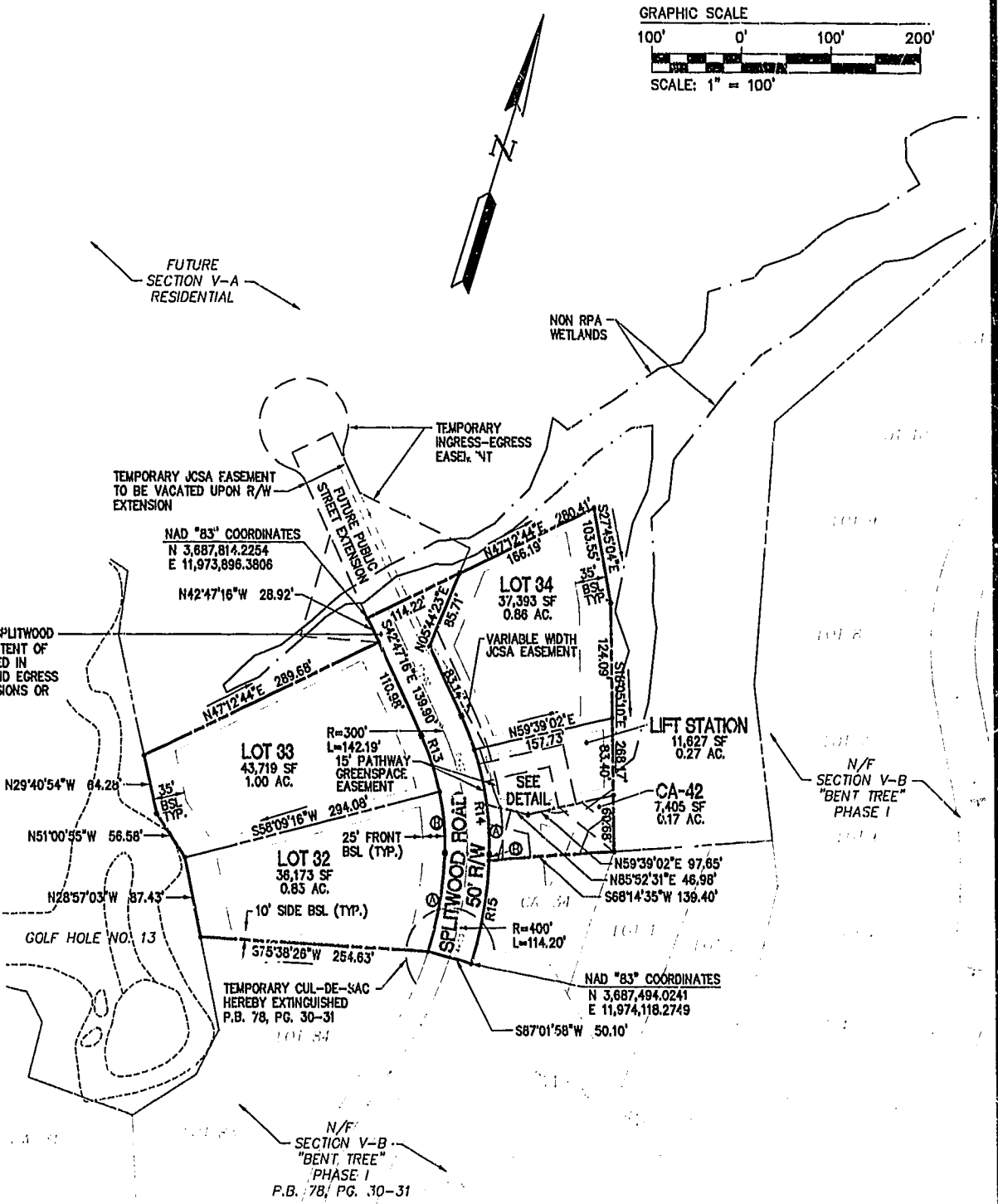
COMMON AREA CURVE TABLE						
CURVE	DELTA	RADIUS	ARC	TANGENT	CHORD	CHORD BEARING
CA-39	30°04'01"	50.00	26.24	13.43	25.94	S49°59'59"E
CA-40	19°56'36"	275.00	95.72	48.35	95.24	S58°36'50"W
CA-42A	9°33'54"	325.00	54.26	27.19	54.19	N20°24'47"W
CA-42B	0°49'00"	425.00	6.06	3.03	6.05	N15°13'20"W

LIFT STATION CURVE TABLE						
CURVE	DELTA	RADIUS	ARC	TANGENT	CHORD	CHORD BEARING
LS-1	10°43'27"	325.00	60.83	30.50	60.74	N30°33'27"W

RIGHT-OF-WAY CURVE TABLE						
CURVE	DELTA	RADIUS	ARC	TANGENT	CHORD	CHORD BEARING
R1	7°42'43"	420.00	56.53	29.31	56.49	S71°38'45"E
R2	70°51'49"	190.00	234.99	135.18	220.30	N76°46'42"E
R3	75°28'38"	275.00	362.26	212.84	336.63	N79°05'07"E
R4	276°20'09"	50.00	241.15	-	66.69	S28°11'01"W
R5	74°47'49"	225.00	293.73	172.02	273.31	S78°44'43"W
R6	70°51'49"	240.00	296.83	170.76	278.27	S76°46'42"W
R7	7°42'43"	370.00	49.80	24.94	49.76	N71°38'45"W
R8	27°18'26"	320.00	152.51	77.73	151.07	N45°31'30"E
R9	25°05'01"	430.00	188.25	95.06	186.75	N44°24'47"E
R10	276°21'48"	50.00	241.17	-	60.68	N32°08'44"W
R11	24°49'49"	380.00	164.60	83.65	163.40	S44°17'11"W
R12	27°19'26"	370.00	176.34	89.88	174.68	S45°31'30"W
R13	27°09'26"	275.00	130.35	66.42	129.13	N29°12'33"W
R14	27°09'26"	325.00	154.04	78.50	152.61	S29°12'33"E
R15	16°08'25"	425.00	119.72	60.26	119.33	N07°33'38"W

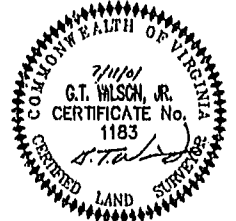


NOTE: THIS RIGHT-OF-WAY (SPLITWOOD ROAD) IS PLATTED WITH THE INTENT OF BEING EXTENDED AND CONTINUED IN ORDER TO PROVIDE INGRESS AND EGRESS TO AND FROM FUTURE SUBDIVISIONS OR ADJACENT PROPERTY.



5248 Olde Towne Road, Suite 1  
Williamsburg, Virginia 23108  
(757) 253-0040  
Fax (757) 220-8994

PLAT OF SUBDIVISION  
SECTION V-B 'BENT TREE' SECTION 3 LOTS 32-34  
AT STONEHOUSE  
FOR  
STONEHOUSE DEVELOPMENT COMPANY, L.L.C.  
**STONEHOUSE**  
STONEHOUSE DISTRICT JAMES CITY COUNTY VIRGINIA



No.	DATE	REVISION / COMMENT / NOTE	BY
2	3/19/01	ADDED LABEL DELINEATING FUTURE R.O.W. PER J.C.C. COMMENTS	AWT
1	9/7/01	REVISED DETAIL OF EASEMENTS PER J.C.C. COMMENTS	AWT

Designed	Drawn
AES	AWT
Scale	Date
1"=100'	7/11/01
Project No.	
8878	
Drawing No.	
3 OF 3	