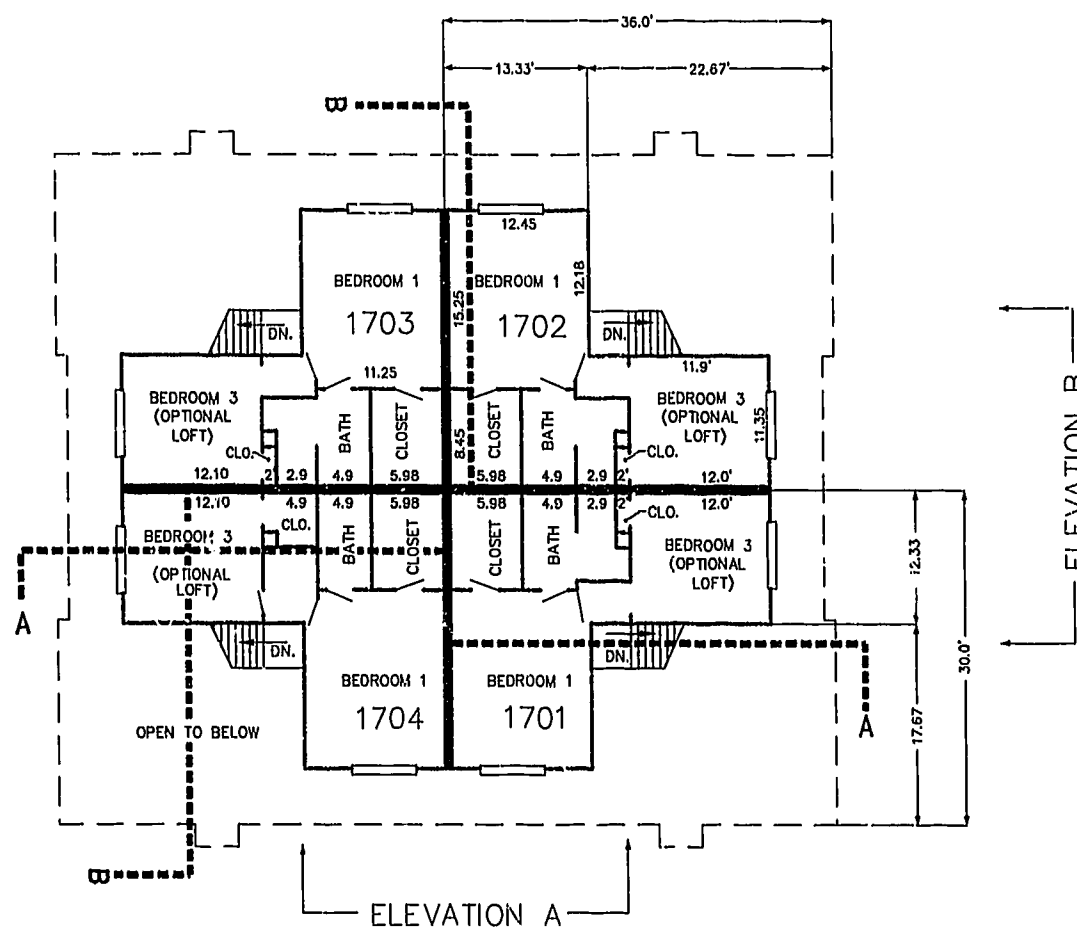
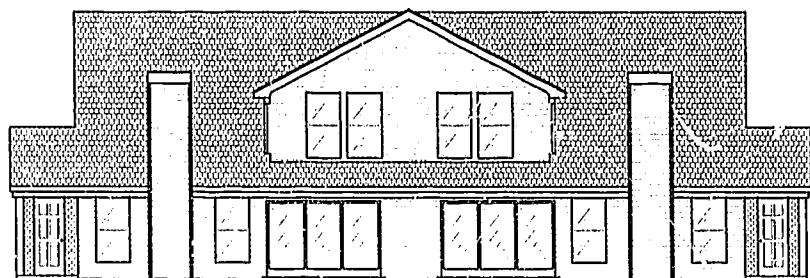


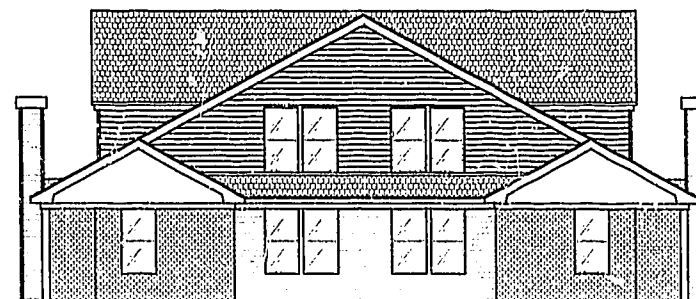
FIRST FLOOR PLAN  
(UNIT #1702 IS TYPICAL)



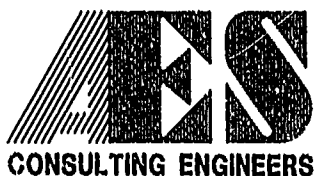
SECOND FLOOR PLAN  
(UNIT #1702 IS TYPICAL)



ELEVATION A

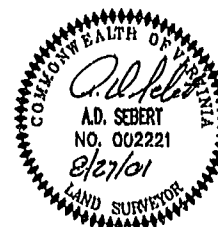


ELEVATION B



5248 Olde Towne Road, Suite 1  
Williamsburg, Virginia 23188  
(757) 253-0040  
Fax (757) 220-8994

PLAT OF CONDOMINIUM  
WESTGATE AT WILLIAMSBURG,  
A CONDOMINIUM  
PHASE EIGHTEEN  
OWNED BY: 752 L.L.C.,  
A VIRGINIA LIMITED LIABILITY COMPANY  
CITY OF WILLIAMSBURG VIRGINIA



No.	DATE	REVISION / COMMENT / NOTE	BY

City of Williamsburg & County of James City  
Circuit Court: This PLAT was recorded on  
13 Oct 2001  
at 12:14 PM, PB 83, PG 25-30  
DOCUMENT # 011395  
BETSY B. WOOLRIDGE, CLERK  
Betsy B. Woolridge, Rep. Clerk

Designed JTW/ADS	Drawn JFS
Scale 1" = 10'	Date 8/27/01
Project No. 8395-6	
Drawing No. 5 OF 6	