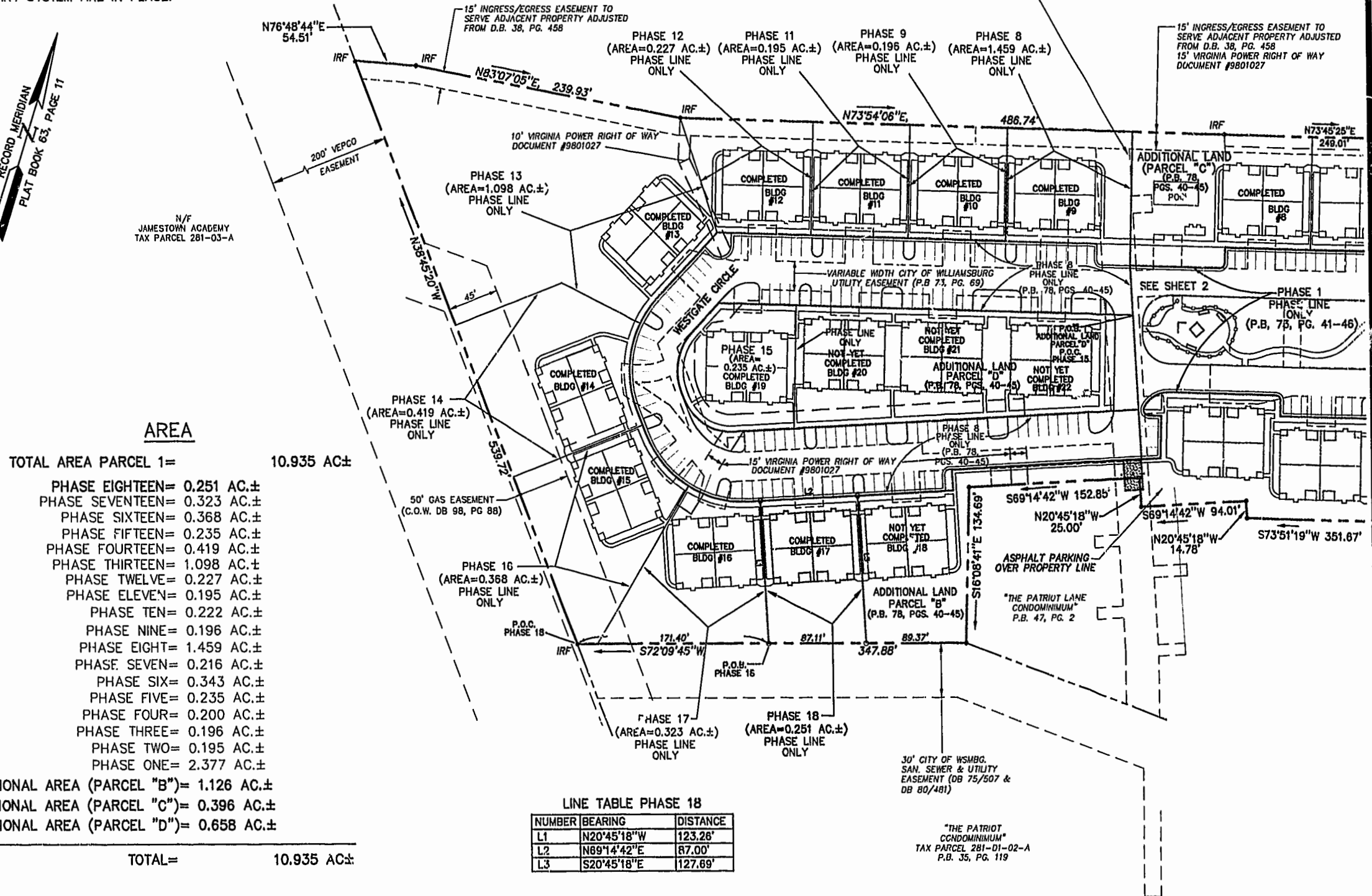
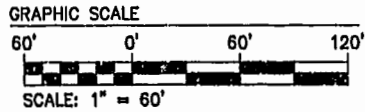


NOTE:
AT THE TIME OF THIS SURVEY
ROADS AND SIDEWALK ARE UNDER
CONSTRUCTION. (PROPOSED
LOCATION SHOWN). WATER &
& SANITARY SYSTEM ARE IN PLACE.



AREA

TOTAL AREA PARCEL 1= 10.935 AC±

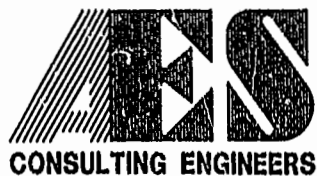
PHASE EIGHTEEN= 0.251 AC.±
 PHASE SEVENTEEN= 0.323 AC.±
 PHASE SIXTEEN= 0.368 AC.±
 PHASE FIFTEEN= 0.235 AC.±
 PHASE FOURTEEN= 0.419 AC.±
 PHASE THIRTEEN= 1.098 AC.±
 PHASE TWELVE= 0.227 AC.±
 PHASE ELEVEN= 0.195 AC.±
 PHASE TEN= 0.222 AC.±
 PHASE NINE= 0.196 AC.±
 PHASE EIGHT= 1.459 AC.±
 PHASE SEVEN= 0.216 AC.±
 PHASE SIX= 0.343 AC.±
 PHASE FIVE= 0.235 AC.±
 PHASE FOUR= 0.200 AC.±
 PHASE THREE= 0.196 AC.±
 PHASE TWO= 0.195 AC.±
 PHASE ONE= 2.377 AC.±

ADDITIONAL AREA (PARCEL "B")= 1.126 AC.±
 ADDITIONAL AREA (PARCEL "C")= 0.396 AC.±
 ADDITIONAL AREA (PARCEL "D")= 0.658 AC.±

TOTAL= 10.935 AC±

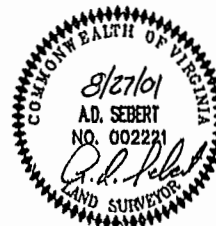
LINE TABLE PHASE 18

NUMBER	BEARING	DISTANCE
L1	N20°45'18"W	123.26'
L2	N89°14'42"E	87.00'
L3	S20°45'18"E	127.89'



5248 Olde Towne Road, Suite 1
Williamsburg, Virginia 23188
(757) 253-0040
Fax (757) 220-8994

PLAT OF CONDOMINIUM
WESTGATE AT WILLIAMSBURG,
A CONDOMINIUM
PHASE EIGHTEEN
OWNED BY: 752 L.L.C.,
A VIRGINIA LIMITED LIABILITY COMPANY
CITY OF WILLIAMSBURG VIRGINIA



City of Williamsburg & County of James City Circuit Court: This PLAT was recorded on 12/14/14 at 12:14 PM, PG. 82 PG. 25-30 DOCUMENT # 011395 BEISY B. WOOLRIDGE, CLERK	
No.	DATE
REVISION / COMMENT / NOTE	
BY	

Designed GTW/ADS	Drawn JFS
Scale 1" = 60'	Date 8/27/01
Project No. 8395-6	
Drawing No. 3 OF 6	