

NOW OR FORMERLY
COLLEGE OF WILLIAM & MARY
IRONBOUND ROAD



M.B. 71 - PG. 73

T.P. 372-(0A)-00-028
NOW OR FORMERLY
JEROME & EVELYN RANDOLPH
(D.B. 30, PG. 470)
ZONE: RM-2

T.P. 372-(0A)-00-030
NOW OR FORMERLY
JEROME & EVELYN RANDOLPH
(D.B. 37, PG. 379)
ZONE: RM-2

T.P. 372-(05)-00-001
NOW OR FORMERLY
CHESAPEAKE MEDIA, INC.
(D.B. 74, PG. 121)
(M.B. 42, PG. 25)
ZONE: B-2 CONDITIONAL

MATCH LINE
SEE SHEET 3

40' R/W
ROLAND STREET

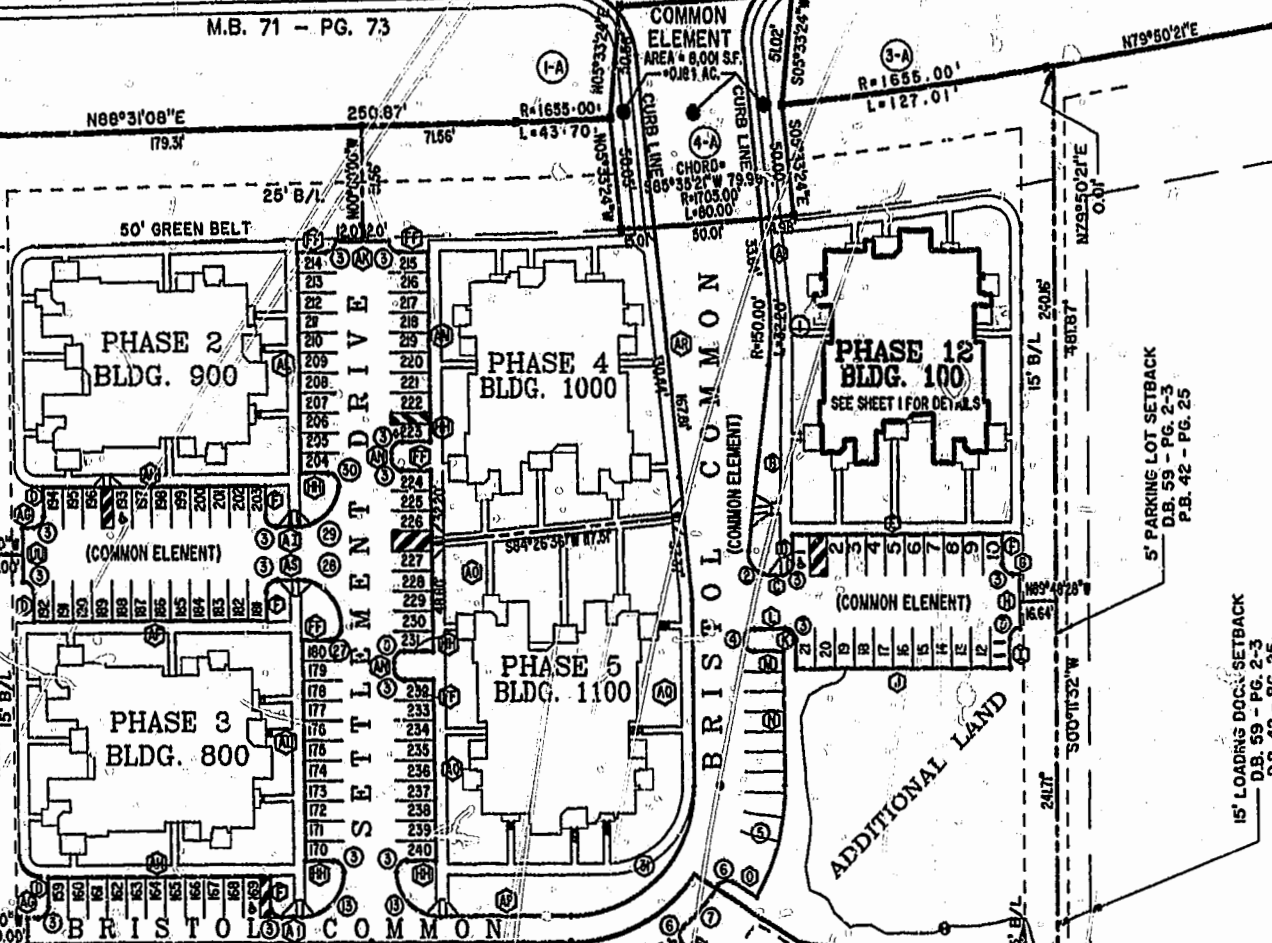
MATCH LINE
SEE SHEET 3

PHASE 6
SEE SHEET 3

ADDITIONAL LAND

RECREATION AREA

PEDESTRIAN BD'WK.



City of Williamsburg & County of James City
Circuit Court: This PLAT was recorded on
11 Oct. 2001
at 12:43 PM, PG. 23, PG. 21-24
DOCUMENT # 011386
BETSY B. WOOLRIDGE, CLERK
Betsy B. Woolridge Dep. Clerk

BRISTOL COMMONS
A CONDOMINIUM COMMUNITY
PHASE TWELVE
FOR
KEY GROUP, LLC
CITY OF WILLIAMSBURG, VIRGINIA

Hassell & Folkes, P.C.
Engineers Surveyors Planners
Chesapeake, VA 23320
(757)547-9531

SIZE	CONTRACT NO	DISK/BOX	FILENAME	REV.
C	98042	123J/15	BRISTOL12.DWG	
SCALE: 1"=50'		DATE: 08/20/01	SHEET 2 of 4	