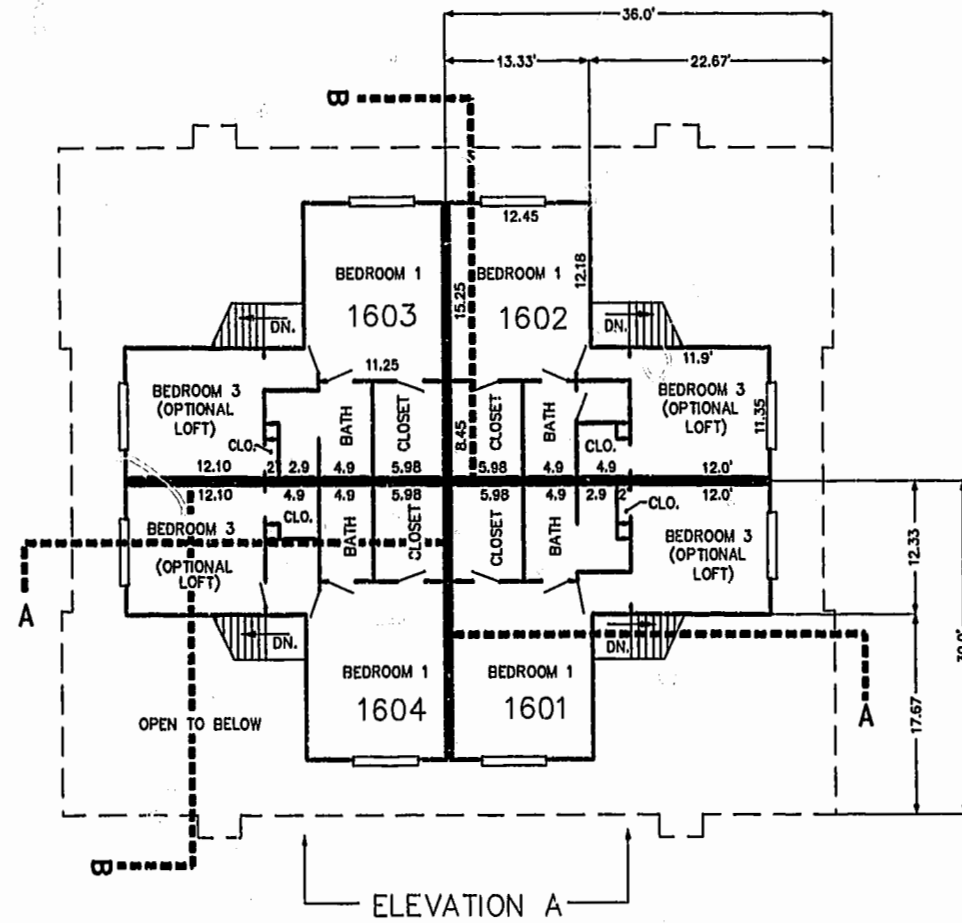
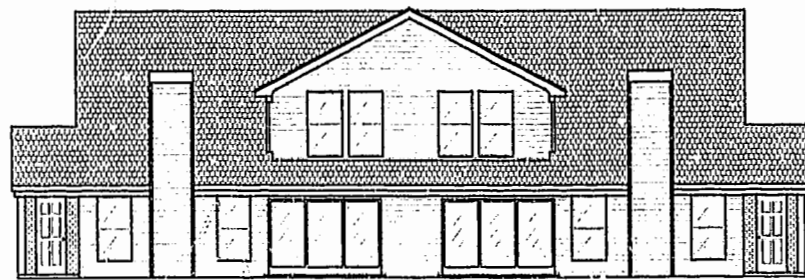


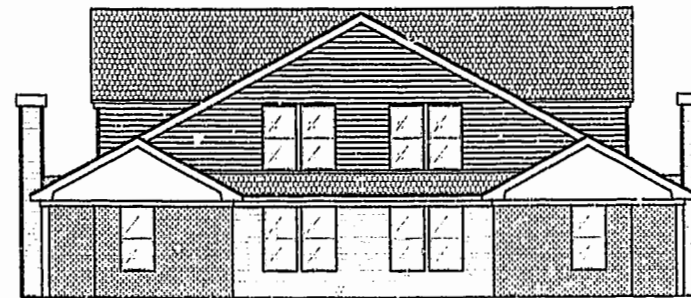
FIRST FLOOR PLAN
(UNIT #1602 IS TYPICAL)



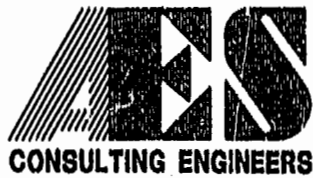
SECOND FLOOR PLAN
(UNIT #1602 IS TYPICAL)



ELEVATION A



ELEVATION B



5248 Olde Towne Road, Suite 1
Williamsburg, Virginia 23188
(757) 253-0040
Fax (757) 220-8994

PLAT OF CONDOMINIUM
WESTGATE AT WILLIAMSBURG,
A CONDOMINIUM
PHASE SEVENTEEN
OWNED BY: 752 L.L.C.,
A VIRGINIA LIMITED LIABILITY COMPANY
CITY OF WILLIAMSBURG VIRGINIA



City of Williamsburg & County of James City Circuit Court: This PLAT was recorded on <i>August 22, 2001</i> at <i>2:07 PM</i> and paid <i>PG 99.04</i> DOCUMENT # <i>01161</i> BETSY B. WOOLRIDGE, CLERK		
<i>Dawn B. Martin</i> Dep. Clerk		
No.	DATE	REVISION / COMMENT / NOTE
		BY

Designed GTW/ADS	Drawn JFS
Scale 1" = 1'-0"	Date 8/8/01
Project No. 8395-6	
Drawing No. 5 OF 6	