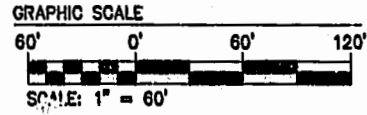


NOTE:
 AT THE TIME OF THIS SURVEY
 ROADS AND SIDEWALK ARE UNDER
 CONSTRUCTION. (PROPOSED
 LOCATION SHOWN). WATER &
 & SANITARY SYSTEM ARE IN PLACE.



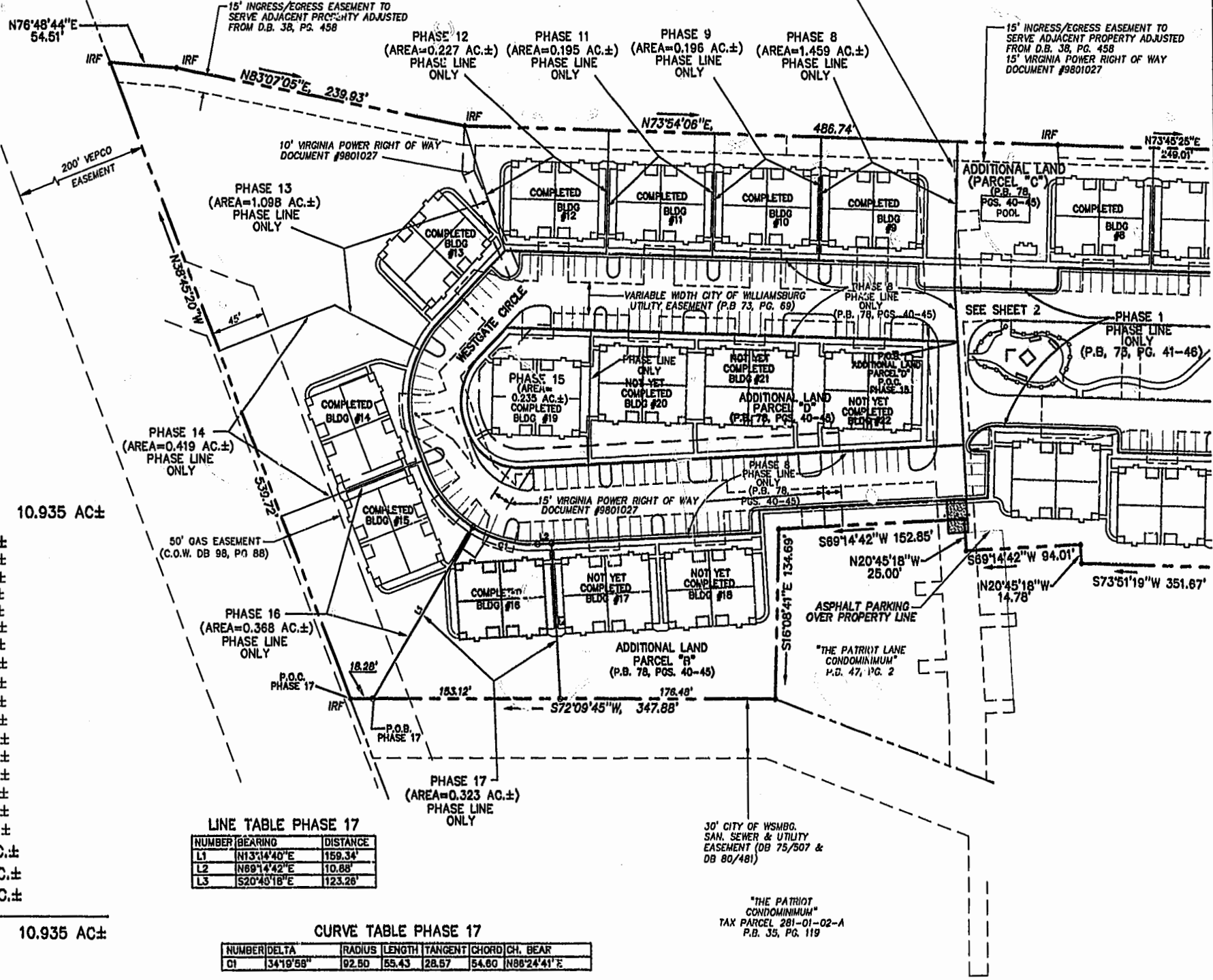
N OR F
 WARBURTON & MAHON ESTATE
 TAX PARCEL 282-A-001

VARIABLE WIDTH CITY OF WILLIAMSBURG
 SAN. SEWER & UTILITY
 EASEMENT (DB 75/507 &
 DB 80/481)

15' INGRESS/EGRESS EASEMENT TO
 SERVE ADJACENT PROPERTY ADJUSTED
 FROM D.B. 38, PG. 458
 15' VIRGINIA POWER RIGHT OF WAY
 DOCUMENT #9801027



N/F
 JAMESTOWN ACADEMY
 TAX PARCEL 281-03-A



AREA

TOTAL AREA PARCEL 1= 10.935 AC±

PHASE SEVENTEEN= 0.323 AC±
 PHASE SIXTEEN= 0.368 AC±
 PHASE FIFTEEN= 0.235 AC±
 PHASE FOURTEEN= 0.419 AC±
 PHASE THIRTEEN= 1.098 AC±
 PHASE TWELVE= 0.227 AC±
 PHASE ELEVEN= 0.195 AC±
 PHASE TEN= 0.222 AC±
 PHASE NINE= 0.196 AC±
 PHASE EIGHT= 1.459 AC±
 PHASE SEVEN= 0.216 AC±
 PHASE SIX= 0.343 AC±
 PHASE FIVE= 0.235 AC±
 PHASE FOUR= 0.200 AC±
 PHASE THREE= 0.196 AC±
 PHASE TWO= 0.195 AC±
 PHASE ONE= 2.377 AC±

ADDITIONAL AREA (PARCEL "B")= 1.377 AC±
 ADDITIONAL AREA (PARCEL "C")= 0.396 AC±
 ADDITIONAL AREA (PARCEL "D")= 0.658 AC±

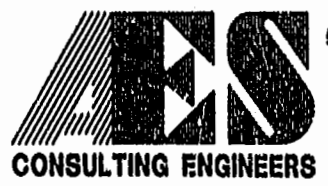
TOTAL= 10.935 AC±

LINE TABLE PHASE 17

NUMBER	BEARING	DISTANCE
L1	N13°14'40"E	159.34'
L2	N89°14'42"E	10.88'
L3	S20°43'18"E	123.28'

CURVE TABLE PHASE 17

NUMBER	DELTA	RADIUS	LENGTH	TANGENT	CHORD	CH. BEAR
C1	34°19'58"	92.90	53.43	28.57	54.60	N86°24'41"E



5248 Olde Towne Road, Suite 1
 Williamsburg, Virginia 23188
 (757) 253-0040
 Fax (757) 220-8994

**PLAT OF CONDOMINIUM
 WESTGATE AT WILLIAMSBURG,
 A CONDOMINIUM
 PHASE SEVENTEEN**
 OWNED BY: 752 L.L.C.,
 A VIRGINIA LIMITED LIABILITY COMPANY
 CITY OF WILLIAMSBURG VIRGINIA



City of Williamsburg & County of James City Circuit Court: This PLAT was recorded on August 22, 2001 at 1:27 PM PM PG. 99/101 DOCUMENT # 0115102 BETSY B. WOOLRIDGE, CLERK Dawn R. Martin, Dep. Clerk	No.	DATE	REVISION / COMMENT / NOTE	BY

Designed GTW/ADS	Drawn JFS
Scale 1" = 60'	Date 8/8/01
Project No. 8395-6	
Drawing No. 3 OF 6	