

EXHIBIT B-8
 SUPPLEMENTAL CONDOMINIUM PLAN
 OF
 WYNDHAM PLANTATION
 CONDOMINIUM

WILLIAMSBURG, VIRGINIA
 SCALE: 1"=10' JULY 10, 2001

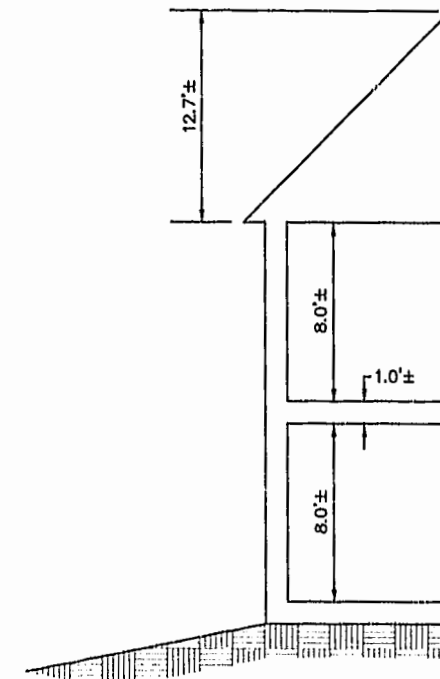
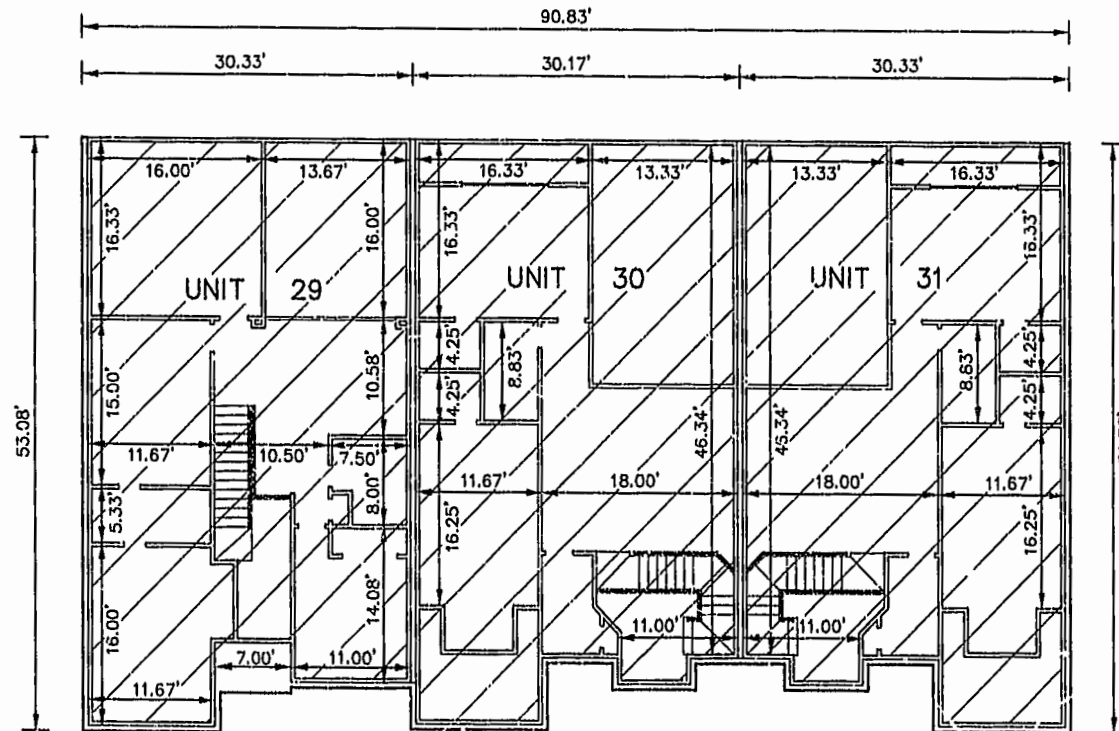
JOHN E. SIRINE AND ASSOCIATES, LTD.
 SURVEYORS • ENGINEERS • PLANNERS
 VIRGINIA BEACH, VIRGINIA
 (757) 486-4910

NOTES:

1. BUILDING DIMENSIONS SHOWN HEREON ARE INTERIOR DIMENSIONS. THESE DIMENSIONS ARE IN FEET AND WERE TAKEN FROM PLANS SUPPLIED ENTITLED "WYNDHAM PLANTATION AT WILLIAMSBURG, FLOOR PLANS" BY PROGRESSIVE DESIGNS DATED 11/19/98.
2. INTERIOR UNIT CONFIGURATIONS AND PARTITIONS AS DEPICTED HEREON ARE FOR THE PURPOSE OF ILLUSTRATION ONLY AND MAY NOT REPRESENT THE INTERIOR OF A UNIT AS ACTUALLY CONSTRUCTED.

SECOND FLOOR - BUILDING 25

SCALE: 1"=10'

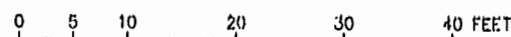


SCALE: 1"=5'

UNIT AREA

THE UNDERSIGNED CERTIFIES THAT THESE PLANS ARE ACCURATE AND COMPLY WITH THE PROVISIONS OF CODE OF VIRGINIA, SECTION 55-79.58.B AND THAT ALL UNITS OR PORTIONS THEREOF DEPICTED HEREON AND ALL COMMON ELEMENTS HAVE BEEN SUBSTANTIALLY COMPLETED.

PHASE	UNIT No.	UNIT ADDRESS	UNIT AREA
9	29	401 ZELKOVA ROAD	2,246 S.F.
9	30	405 ZELKOVA ROAD	2,101 S.F.
9	31	409 ZELKOVA ROAD	2,101 S.F.



GRAPHIC SCALE

Williamsburg/James City County
 12:09 PM
 Recorded on July 20, 2001
 DOCUMENT # 011063
 Betsy B. Woolridge, Clerk

SIGNED: Jeffrey D. Williams
 JEFFREY D. WILLIAMS, L.S.

PLAT RECORDED IN
 P.D. NO. 82 PAGE 76-76

