

PLAT OF SUBDIVISION WATERFORD AT POWHATAN SECONDARY

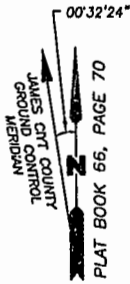
PHASE EIGHTEEN
BERKELEY DISTRICT
JAMES CITY COUNTY, VIRGINIA

DATE: 10/21/98 SHEET 2 OF 3 SCALE: 1"=100'

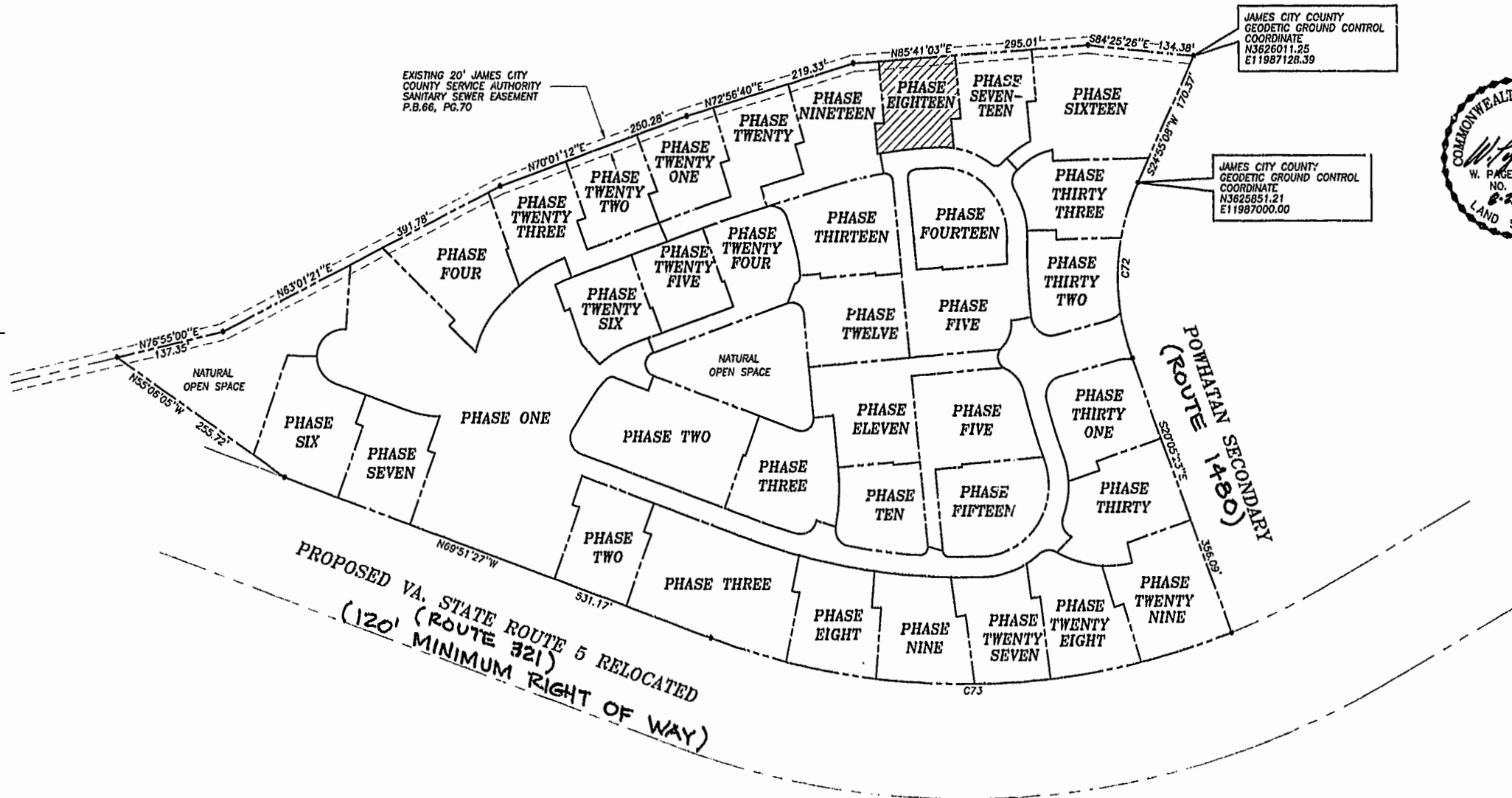
PROJECT NO: 97-008 DRAWN BY: SJB



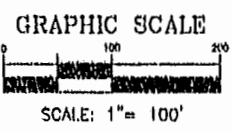
SLIEDD & ASSOCIATES, P.C.
ENGINEERS PLANNERS SURVEYORS
11832 ROCK LANDING DRIVE, SUITE 203
NEWPORT NEWS, VIRGINIA 23606
(757) 873-3386



NOW OR FORMERLY
POWHATAN ENTERPRISES, INC.



PROPOSED VA. STATE ROUTE 5 RELOCATED
(120' MINIMUM RIGHT OF WAY)



Williamsburg, James City County
Recorded 18 day of July, 2001
DOCUMENT # 210,012,461
By: Dawn R. Miller, Clerk
BETSY B. WOOLRIDGE, CLERK

CURVE DATA

NUMBER	DELTA	RADIUS	LENGTH	TANGENT	CHORD	CHORD BEARING
C72	45°00'31"	280.00'	219.95'	116.00'	214.34'	S02°24'52"W
C73	41°26'14"	924.91'	668.91'	349.84'	654.43'	S89°25'26"W