

SUBDIVISION PLAT
OF
LONGHILL STATION
SECTION 3

AND RESUBDIVISION OF LOTS 167 & 168
SUBDIVISION OF LONGHILL STATION SECTION 4
POWHATAN DISTRICT, JAMES CITY COUNTY, VIRGINIA

NOVEMBER 8, 2000
REVISED 6/23/01

SCALE: 1"=50'

APPROXIMATE LIMITS OF WETLANDS
AS SHOWN ON PLANS BY DJG INC.
DATED 2/25/99.

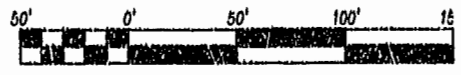
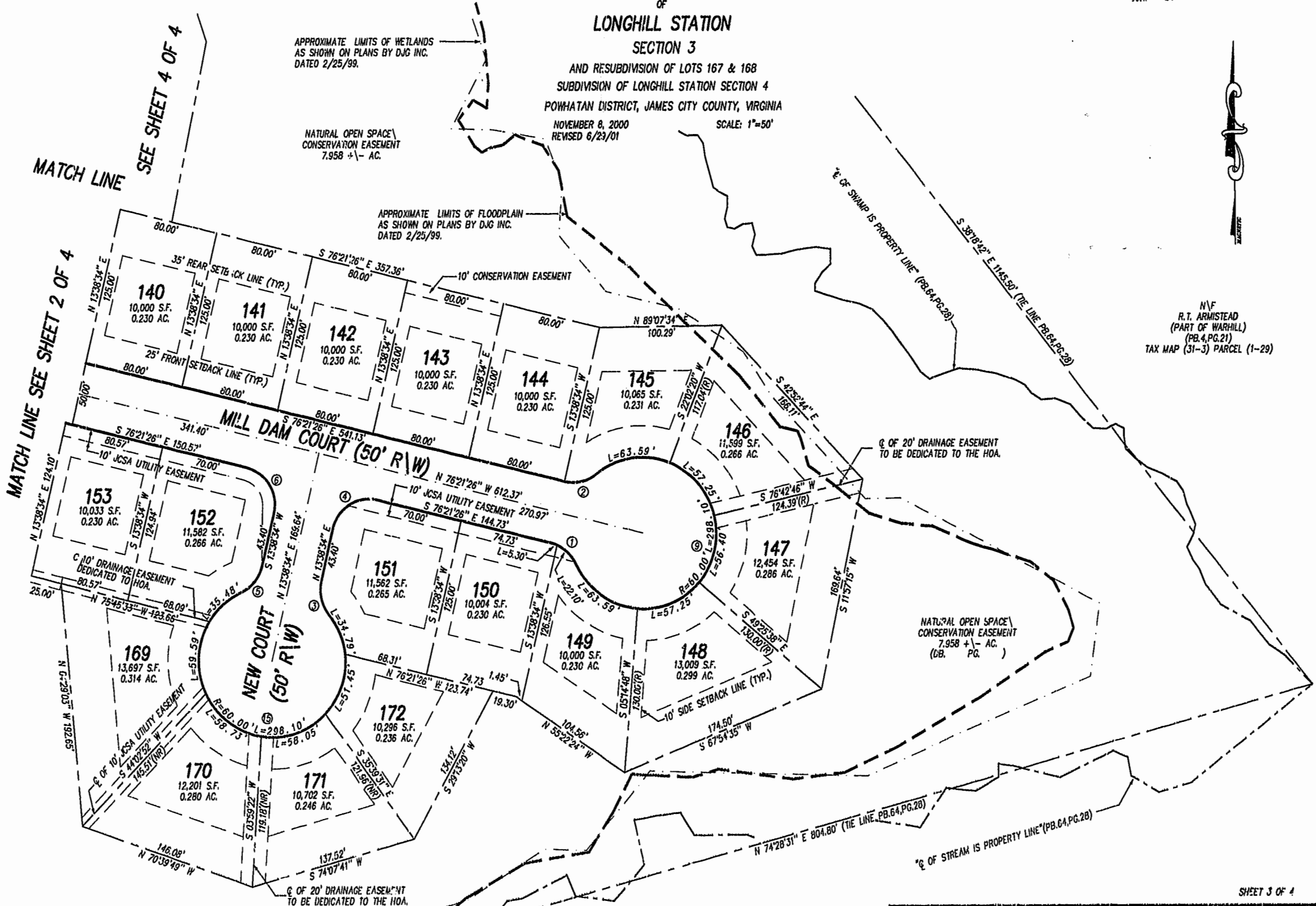
NATURAL OPEN SPACE
CONSERVATION EASEMENT
7.958 +/- AC.

APPROXIMATE LIMITS OF FLOODPLAIN
AS SHOWN ON PLANS BY DJG INC.
DATED 2/25/99.

N/V
R.T. ARMISTEAD
(PART OF WARHILL)
(PB.4,PG.21)
TAX MAP (31-3) PARCEL (1-29)

MATCH LINE SEE SHEET 4 OF 4

MATCH LINE SEE SHEET 2 OF 4



SCALE 1" = 50'



RECORDED IN
P.L. 82 PAGE 63-66

N/V
R.T. ARMISTEAD
TAX MAP (31-3) PARCEL (1-29)
Williamsburg/James City County
11.8.00
Recorded 17 days after 2001
DOCUMENT # 21013366
MERRY D. WOOLIDGE, CLERK

Rickmond Engineering, Inc.
ENGINEERING SURVEYING LAND PLANNING
1643 MERRIMAC TRAIL
WILLIAMSBURG, VA 23185
PHONE: (757)229-1776
FAX: (757)229-4683
www.rickmond.com

CHECKED BY: CBD	DRAWN BY: CBD	SCALE: 1"=50'	DATE: 11-8-00	JOB # 00213
--------------------	------------------	------------------	------------------	----------------