

SUBDIVISION PLAT
OF
LONGHILL STATION
SECTION 3
AND RESUBDIVISION OF LOTS 167 & 168
SUBDIVISION OF LONGHILL STATION SECTION 4
POWHTAN DISTRICT, JAMES CITY COUNTY, VIRGINIA
NOVEMBER 8, 2000
REVISED 6/19/01

EXH. 82 FILE 64



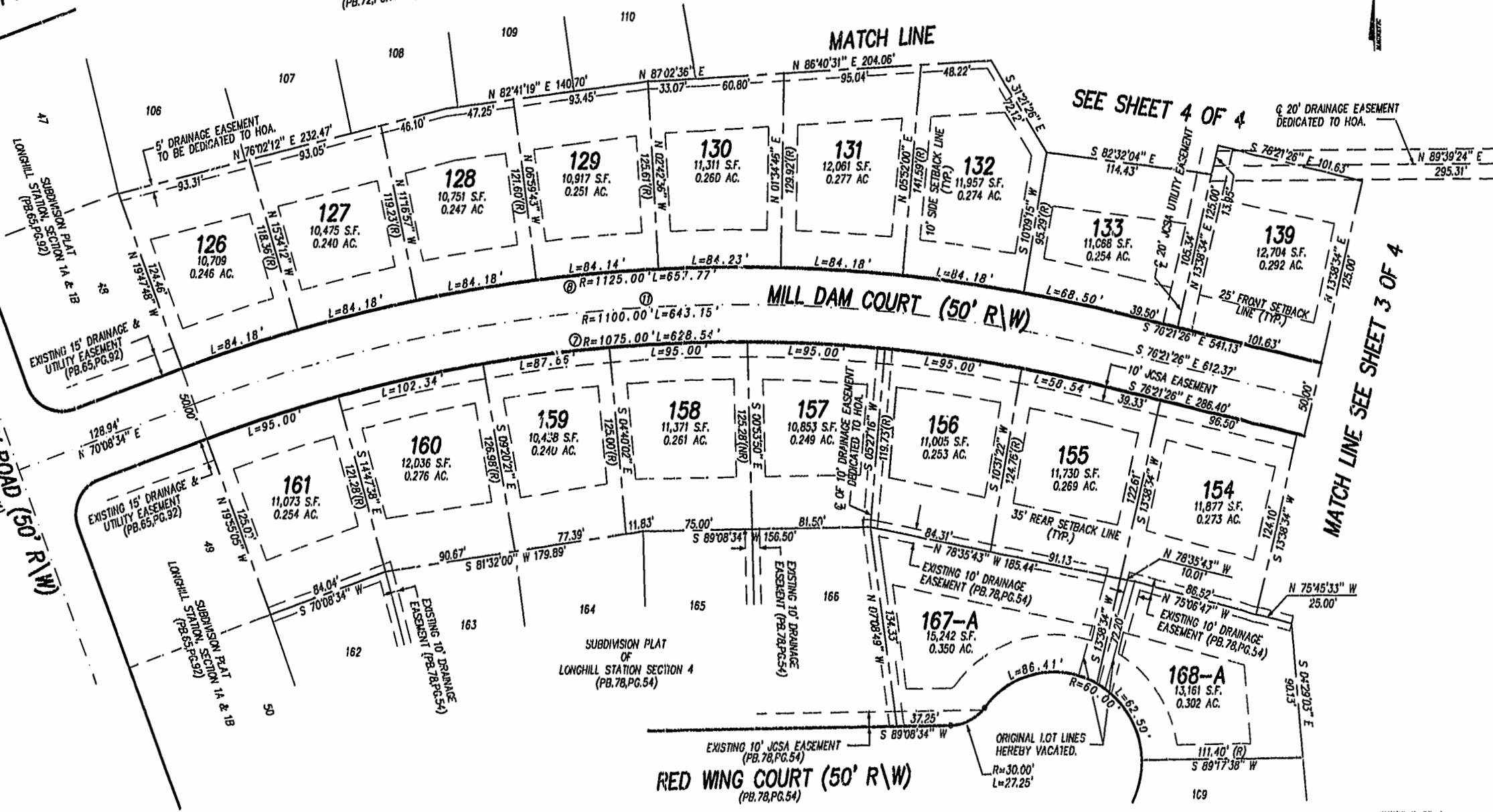
SHENANDOAH DRIVE (50' R/W)

SUBDIVISION PLAT
LONGHILL STATION, SECTION II
(PB.72,PG.17-18)

MATCH LINE

SEE SHEET 4 OF 4

20' DRAINAGE EASEMENT
DEDICATED TO HOA.

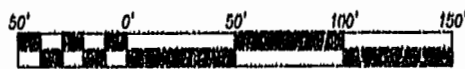


MATCH LINE SEE SHEET 3 OF 4

ALECHEMAY ROAD (50' R/W)

RED WING COURT (50' R/W)
(PB.78,PG.54)

SHEET 2 OF 4



SCALE 1" = 50'

Williamsburg/James City County
Recorded
DOCUMENT # 010012966
RETYD B. WOOLRIDGE, CLERK

PLAT RECORDED BY
P.D. NO. 22 PAGE 2-66



Rickmond

Rickmond Engineering, Inc.
ENGINEERING SURVEYING LAND PLANNING
1643 MERRIMAC TRAIL WILLIAMSBURG, VA 23185
PHONE: (757)229-1776 FAX: (757)229-4683
VINT HILL P.O. BOX 861647 HARRINGTON, VA 20187
PHONE: (540)349-7730 FAX: (540)349-7731

www.rickmond.com

CHECKED BY: CBD	DRAWN BY: CBD	SCALE: 1"=50'	DATE: 11-8-00	JOHN 00213
--------------------	------------------	------------------	------------------	---------------