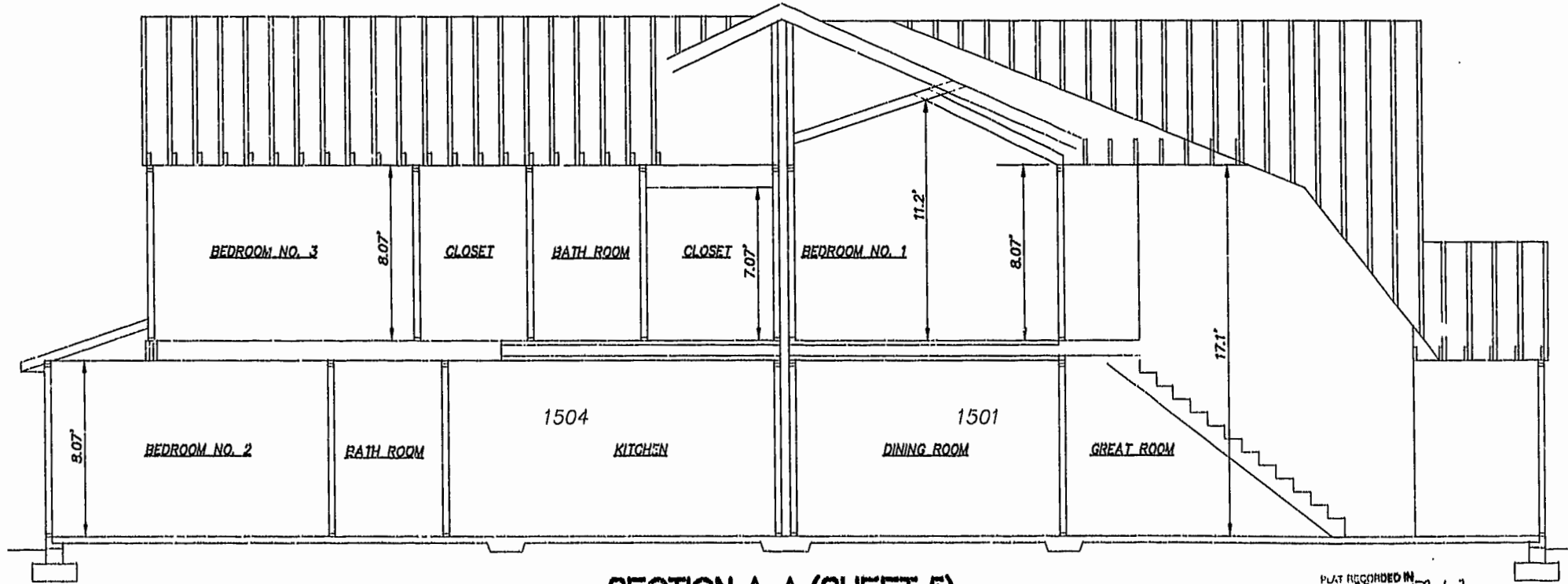


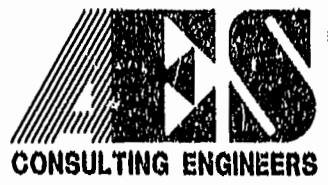
SECTION B-B (SHEET 5)



SECTION A-A (SHEET 5)

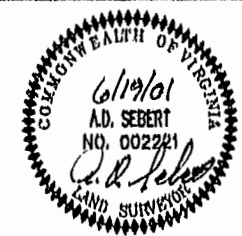
PLAT RECORDED IN P.B. NO. 82 PAGE 62

06.21.01-08:50 8395p166.dwg JFS



5248 Olde Towne Road, Suite 1
 Williamsburg, Virginia 23188
 (757) 253-0040
 Fax (757) 220-8994

PLAT OF CONDOMINIUM
 WESTGATE AT WILLIAMSBURG,
 A CONDOMINIUM
 PHASE SIXTEEN
 OWNED BY: 752 L.L.C.,
 A VIRGINIA LIMITED LIABILITY COMPANY
 CITY OF WILLIAMSBURG VIRGINIA



| | | | |
|-----|------|---------------------------|----|
| No. | DATE | REVISION / COMMENT / NOTE | BY |
| | | | |

Williamsburg/James City County
 4:16 PM 13 day of July 2001
 DOCUMENT # 011032
 By: Betsy H. Woolridge, Clerk
 BETSY H. WOOLRIDGE, CLERK

| | |
|-----------------------|------------------|
| Designed GTW/ADS | Drawn AWT/JFS |
| Scale 1" = 4' | Date 6/19/01 |
| Project No. 8395-6 | |
| Drawing No. 6 OF 6 | |