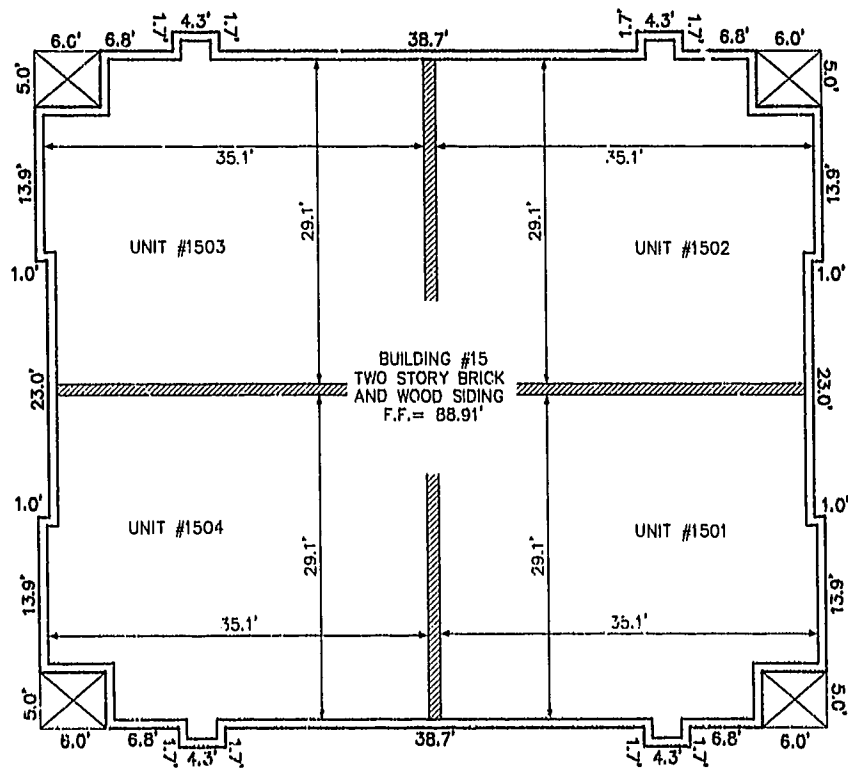
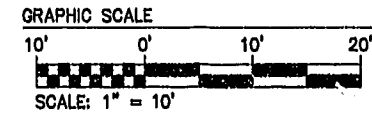
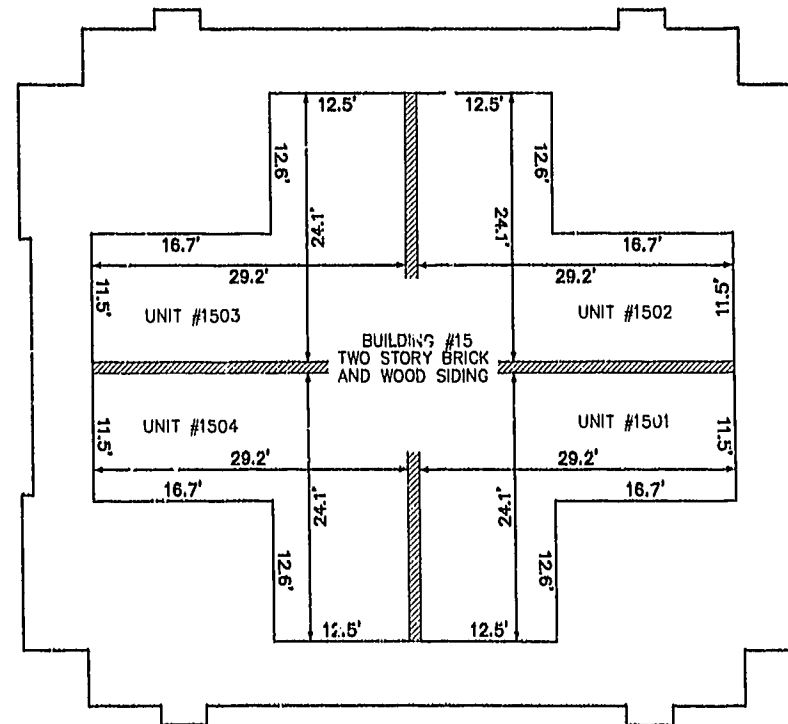


BUILDING NUMBER	UNIT NUMBER	STREET ADDRESS
15	1501	1501 WESTGATE CIRCLE
15	1502	1502 WESTGATE CIRCLE
15	1503	1503 WESTGATE CIRCLE
15	1504	1504 WESTGATE CIRCLE



FRONT OF BUILDING  
FIRST FLOOR



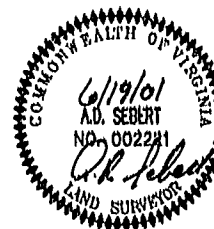
FRONT OF BUILDING  
SECOND FLOOR

PLAT RECORDED IN  
P.L. NO. 82, PAGE 57-62



6248 Olde Towne Road, Suite 1  
Williamsburg, Virginia 23188  
(757) 253-0040  
Fax (757) 220-8994

PLAT OF CONDOMINIUM  
WESTGATE AT WILLIAMSBURG,  
A CONDOMINIUM  
PHASE SIXTEEN  
OWNED BY: 752 L.L.C.,  
A VIRGINIA LIMITED LIABILITY COMPANY  
CITY OF WILLIAMSBURG VIRGINIA



No.	DATE	REVISION / COMMENT / NOTE	BY

Williamsburg/James City County  
File No. 13 day of July 2001  
DOCUMENT # 0110320  
By Dawn R. Smith, Clerk  
BETSY B. WOOLRIDGE, CLERK

Distr. and Scale	Drawn Date
GTW/ADS 1" = 10'	JFS 6/19/01
Project No. 8395-6	
Drawing No. 4 OF 6	

06.21.01-08.48 8395p164.dwg

JFS