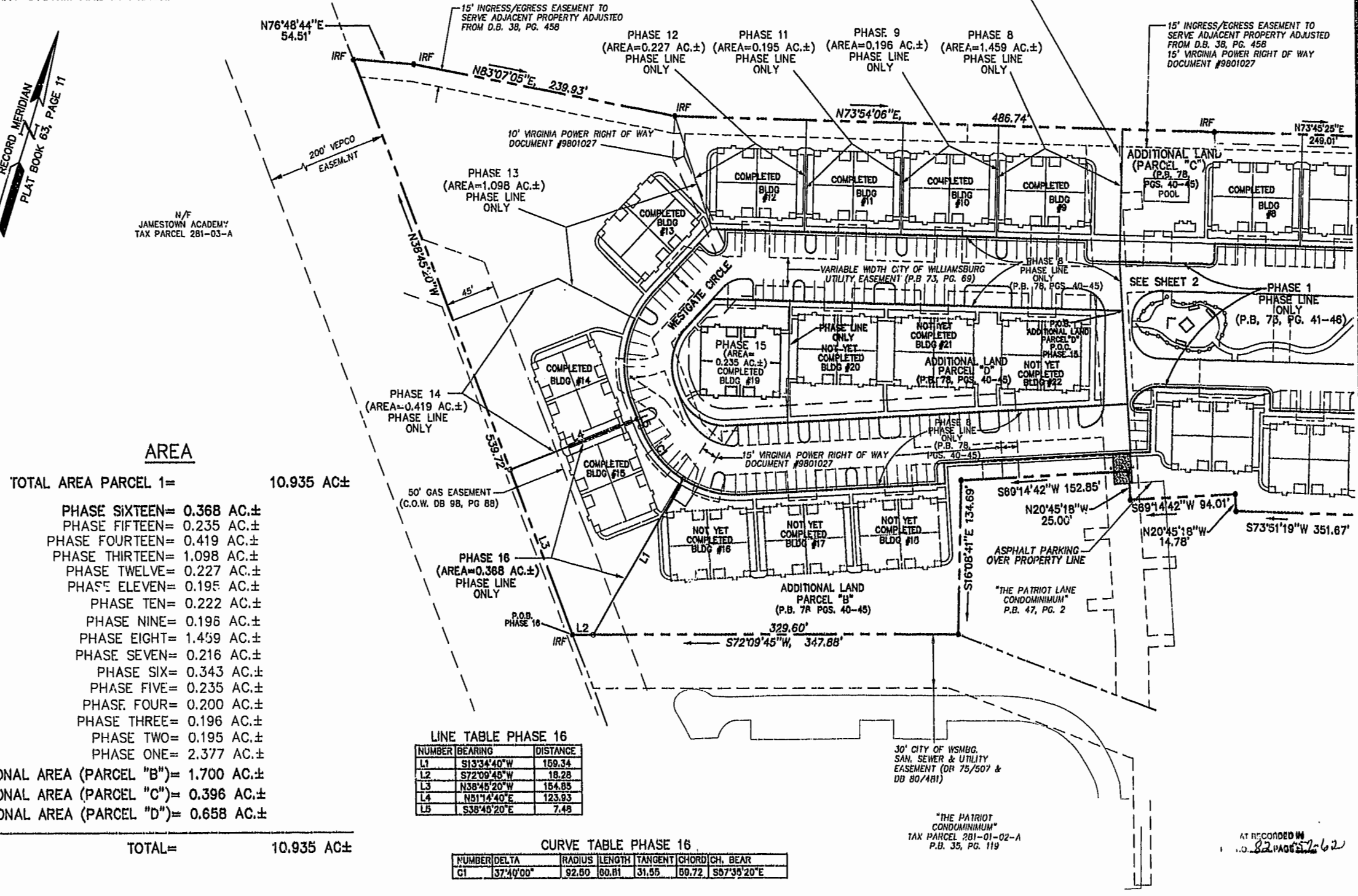
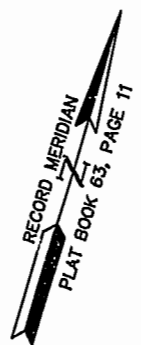
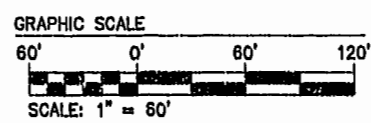


NOTE:
AT THE TIME OF THIS SURVEY
ROADS AND SIDEWALK ARE UNDER
CONSTRUCTION. (PROPOSED
LOCATION SHOWN). WATER &
& SANITARY SYSTEM ARE IN PLACE.



AREA
TOTAL AREA PARCEL 1= 10.935 AC±

- PHASE SIXTEEN= 0.368 AC.±
- PHASE FIFTEEN= 0.235 AC.±
- PHASE FOURTEEN= 0.419 AC.±
- PHASE THIRTEEN= 1.098 AC.±
- PHASE TWELVE= 0.227 AC.±
- PHASE ELEVEN= 0.195 AC.±
- PHASE TEN= 0.222 AC.±
- PHASE NINE= 0.196 AC.±
- PHASE EIGHT= 1.459 AC.±
- PHASE SEVEN= 0.216 AC.±
- PHASE SIX= 0.343 AC.±
- PHASE FIVE= 0.235 AC.±
- PHASE FOUR= 0.200 AC.±
- PHASE THREE= 0.196 AC.±
- PHASE TWO= 0.195 AC.±
- PHASE ONE= 2.377 AC.±

ADDITIONAL AREA (PARCEL "B")= 1.700 AC.±
ADDITIONAL AREA (PARCEL "C")= 0.396 AC.±
ADDITIONAL AREA (PARCEL "D")= 0.658 AC.±

TOTAL= 10.935 AC±

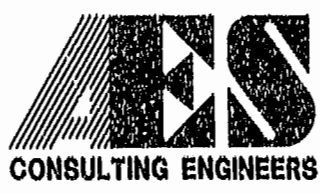
LINE TABLE PHASE 16

NUMBER	BEARING	DISTANCE
L1	S13°34'40"W	159.34
L2	S72°09'45"W	18.28
L3	N38°45'20"W	154.85
L4	N51°14'40"E	123.93
L5	S38°45'20"E	7.48

CURVE TABLE PHASE 16

NUMBER	DELTA	RADIUS	LENGTH	TANGENT	CHORD	CH. BEAR
G1	37°40'00"	92.60	60.81	31.35	69.72	S57°35'20"E

05.29.01-06.57 8395P153.DWG



5248 Olde Towne Road, Suite 1
Williamsburg, Virginia 23188
(757) 253-0040
Fax (757) 220-8994

**PLAT OF CONDOMINIUM
WESTGATE AT WILLIAMSBURG,
A CONDOMINIUM
PHASE SIXTEEN**
OWNED BY: 752 L.L.C.,
A VIRGINIA LIMITED LIABILITY COMPANY
CITY OF WILLIAMSBURG VIRGINIA



No.	DATE	REVISION / COMMENT / NOTE	BY

Williamsburg/James City County
9:16 AM
Recorded 13 day of July 2001
DOCUMENT # 011022
By Dawn R. Marks, Deed Clerk
BETSY H. WOODRUFF, CLERK

Designed	Drawn
GTW/ADS	JF'S
Scale	Date
1" = 60'	6/19/01
Project No.	
8395-6	
Drawing No.	
3 OF 6	

AT RECORDED IN
L.S. 82 PAGE 57-62