

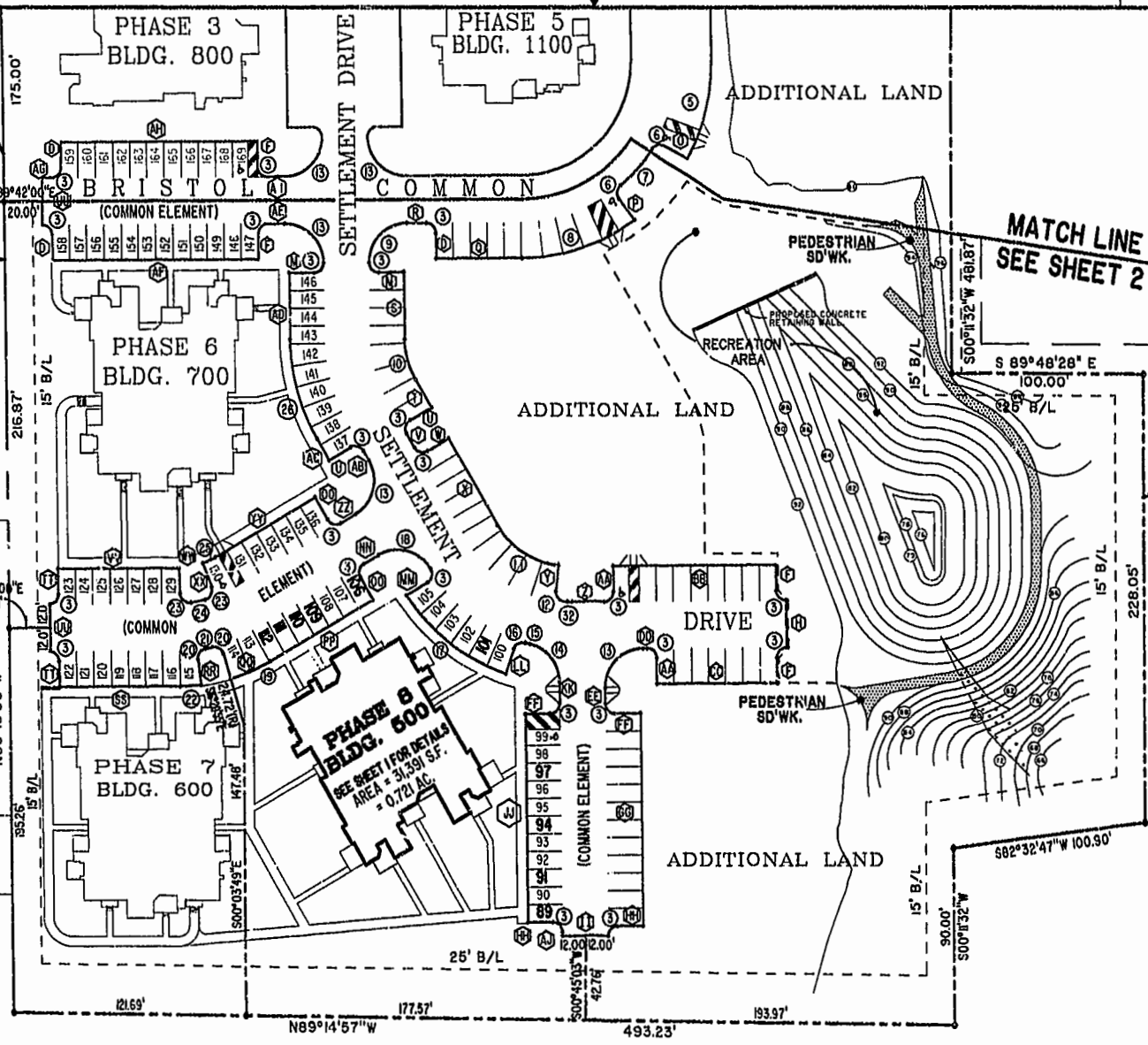
T.P. 372-(0A)-00-030
NOW OR FORMERLY
JEROME & EVELYN RANDOLPH
(D.B. 37, PG. 379)
ZONE: RM-2

MATCH LINE
SEE SHEET 2
40' R/W
ROLAND STREET

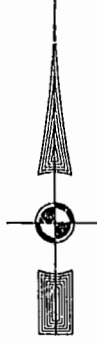
T.P. 372-(0A)-00-004
NOW OR FORMERLY
CECIL AND ALICE M. CROPPER
(D.B. 48, PG. 546)
ZONE: RM-2

T.P. 372-(0A)-00-003
NOW OR FORMERLY
LEONARD & BEATRICE LEGUM
(D.B. 55, PG. 114)
ZONE: RM-2

T.P. 402-01-00A
NOW OR FORMERLY
LULA LORAIN OLIVER
(D.B. 83, PG. 360)
ZONE: RM-2



82' x 52'



MATCH LINE
SEE SHEET 2

15' LOADING DOCK SETBACK
D.B. 59 - PG. 2-3
P.B. 42 - PG. 25

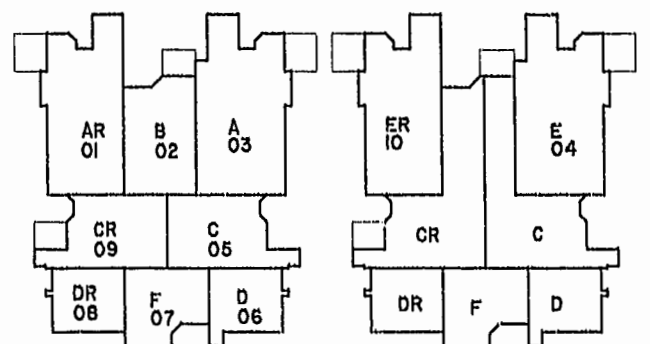
T.P. 372-(05)-00-001
NOW OR FORMERLY
CHESAPEAKE MEDIA, INC.
(D.B. 74, PG. 121)
(M.B. 42, PG. 25)
ZONE: B-2 CONDITIONAL

T.P. 372-(04)-00-00-A2
NOW OR FORMERLY
CITY OF WILLIAMSBURG
(D.B. 121, PG. 321)
(M.B. 36, PG. 77)

PLAT RECORDED IN
P.B. NO. 22 PAGE 33

Williamsburg/James City County
Recorded 11 day of July 2001
DOCUMENT # 211014 1:28 pm
City of Williamsburg Clerk
BETSY B. WOOLRIDGE, CLERK

(FIRST FLOOR) (SECOND FLOOR)



TYPICAL CONDOMINIUM LAYOUT



BRISTOL COMMONS
A CONDOMINIUM COMMUNITY
PHASE EIGHT
FOR
KEY GROUP, LLC
CITY OF WILLIAMSBURG, VIRGINIA

Hassell & Folkes, P.C. Engineers Surveyors Planners Chesapeake, VA 23320 (757)547-9531	SIZE C	CONTRACT NO 98062	DISK/BOX 12/31/15	FILENAME BRISTOL8.DWG	REV. 4
SCALE: 1" = 50'		DATE: 06/13/01		SHEET 3 of 4	