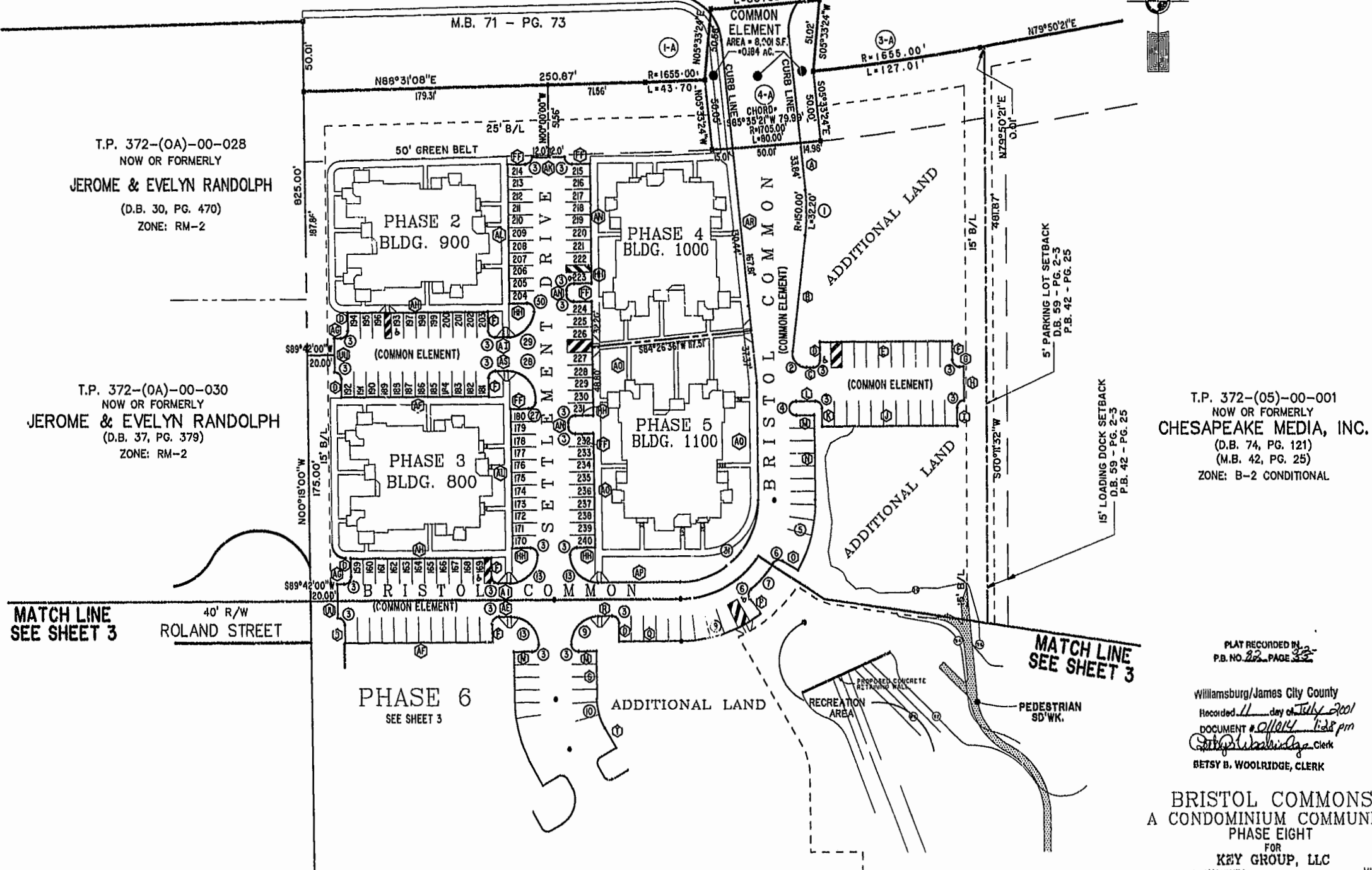
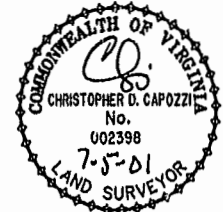


# COLLEGE OF WILLIAM & MARY

NOW OR FORMERLY

## IRONBOUND

## ROAD



T.P. 372--(0A)--00--028  
 NOW OR FORMERLY  
**JEROME & EVELYN RANDOLPH**  
 (D.B. 30, PG. 470)  
 ZONE: RM-2

T.P. 372--(0A)--00--030  
 NOW OR FORMERLY  
**JEROME & EVELYN RANDOLPH**  
 (D.B. 37, PG. 379)  
 ZONE: RM-2

T.P. 372--(05)--00--001  
 NOW OR FORMERLY  
**CHESAPEAKE MEDIA, INC.**  
 (D.B. 74, PG. 121)  
 (M.B. 42, PG. 25)  
 ZONE: B-2 CONDITIONAL

**MATCH LINE**  
 SEE SHEET 3

**MATCH LINE**  
 SEE SHEET 3

PLAT RECORDED IN  
 P.B. NO. 22, PAGE 32

Williamsburg/James City County  
 Recorded 11 day of July 2001  
 DOCUMENT # 0104 1:28 pm  
*Betsy B. Woolridge* Clerk  
**BETSY B. WOOLRIDGE, CLERK**

**BRISTOL COMMONS**  
 A CONDOMINIUM COMMUNITY  
 PHASE EIGHT  
 FOR  
**KEY GROUP, LLC**

Hassell & Folkes, P.C. Engineers Surveyors Planners Chesapeake, VA 23320 (757) 547-9531	SIZE C	CONTRACT NO 98062	DISK/BOX 1231/15	FILENAME BRISTOL8.DWG	REV. 1
SCALE: 1"=50'		DATE: 06/13/01	SHEET 2 of 4		