

Williamsburg/James City County

# "GREENSPRINGS PLANTATION"

46-1-01-0-0001  
(DB 322, PG 254)

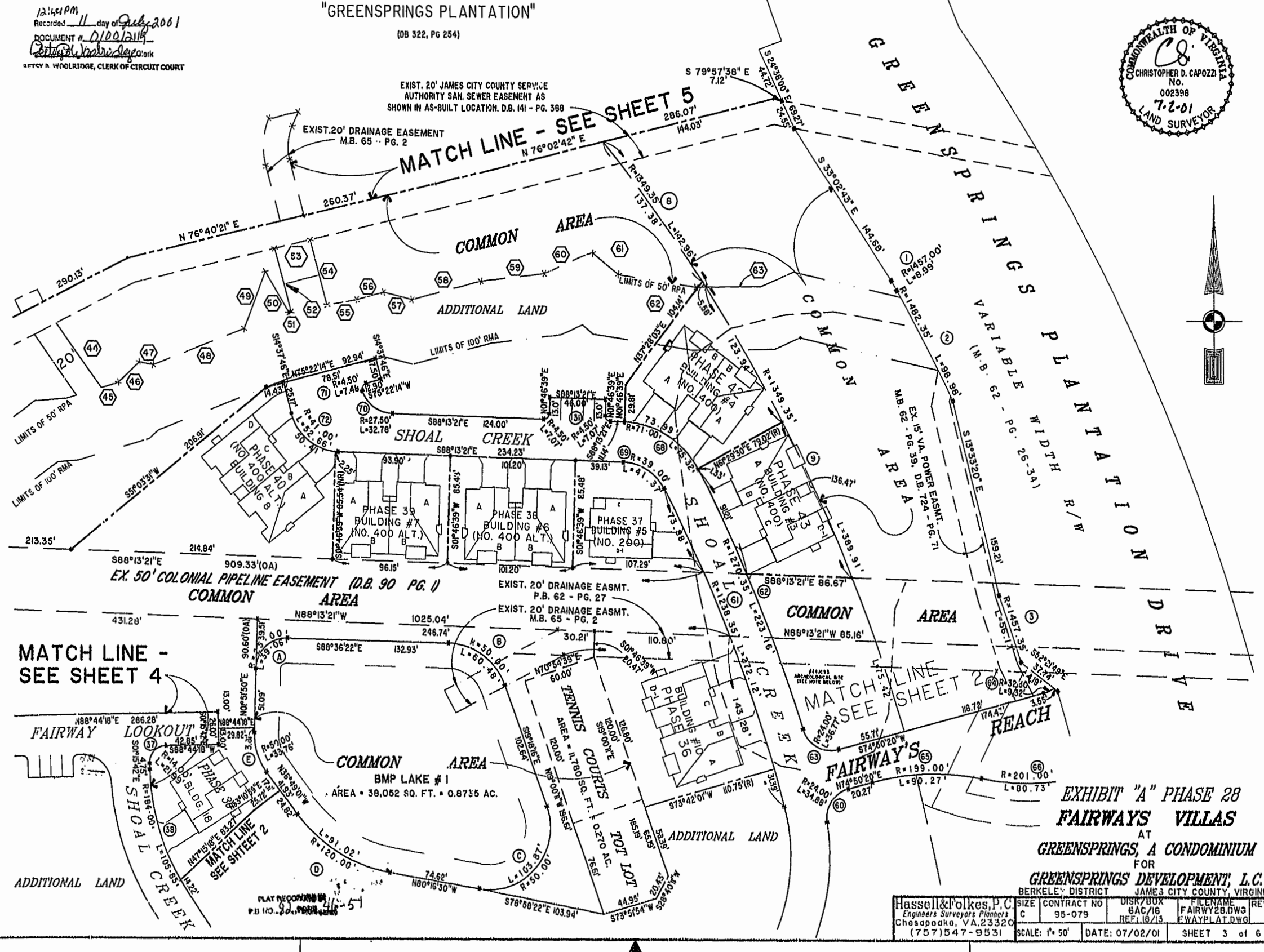
12:41 PM  
Recorded 11 day of July 2001  
DOCUMENT # 010012118  
CITY OF WILLIAMSBURG, VIRGINIA  
MITSY R. WOOLRIDGE, CLERK OF CIRCUIT COURT



EXIST. 20' JAMES CITY COUNTY SERVICE  
AUTHORITY SAN. SEWER EASEMENT AS  
SHOWN IN AS-BUILT LOCATION. D.B. 141 - PG. 388

EXIST. 20' DRAINAGE EASEMENT  
M.B. 65 - PG. 2

## MATCH LINE - SEE SHEET 5



## MATCH LINE - SEE SHEET 4

## MATCH LINE SEE SHEET 2

EX. 50' COLONIAL PIPELINE EASEMENT (D.B. 90 PG. 1)  
COMMON AREA

EXIST. 20' DRAINAGE EASMT. P.B. 62 - PG. 27  
EXIST. 20' DRAINAGE EASMT. M.B. 65 - PG. 2

COMMON AREA  
BMP LAKE # 1  
AREA = 38,052 SQ. FT. = 0.8735 AC.

### EXHIBIT "A" PHASE 28 FAIRWAYS VILLAS AT GREENSPRINGS, A CONDOMINIUM FOR GREENSPRINGS DEVELOPMENT, L.C. BERKELEY DISTRICT JAMES CITY COUNTY, VIRGINIA

Hassell & Folkes, P.C. Engineers Surveyors Planners Chesapeake, VA 23320 (757) 547-9531	SIZE: C CONTRACT NO: 95-079 DISK/BOX: 8AC/16 REF: 18/13	FILENAME: FAIRWY28.DWG FWAYPLAT.DWG	REV: SHEET 3 of 6
--	--	--	-------------------

SCALE: 1" = 50' DATE: 07/02/01