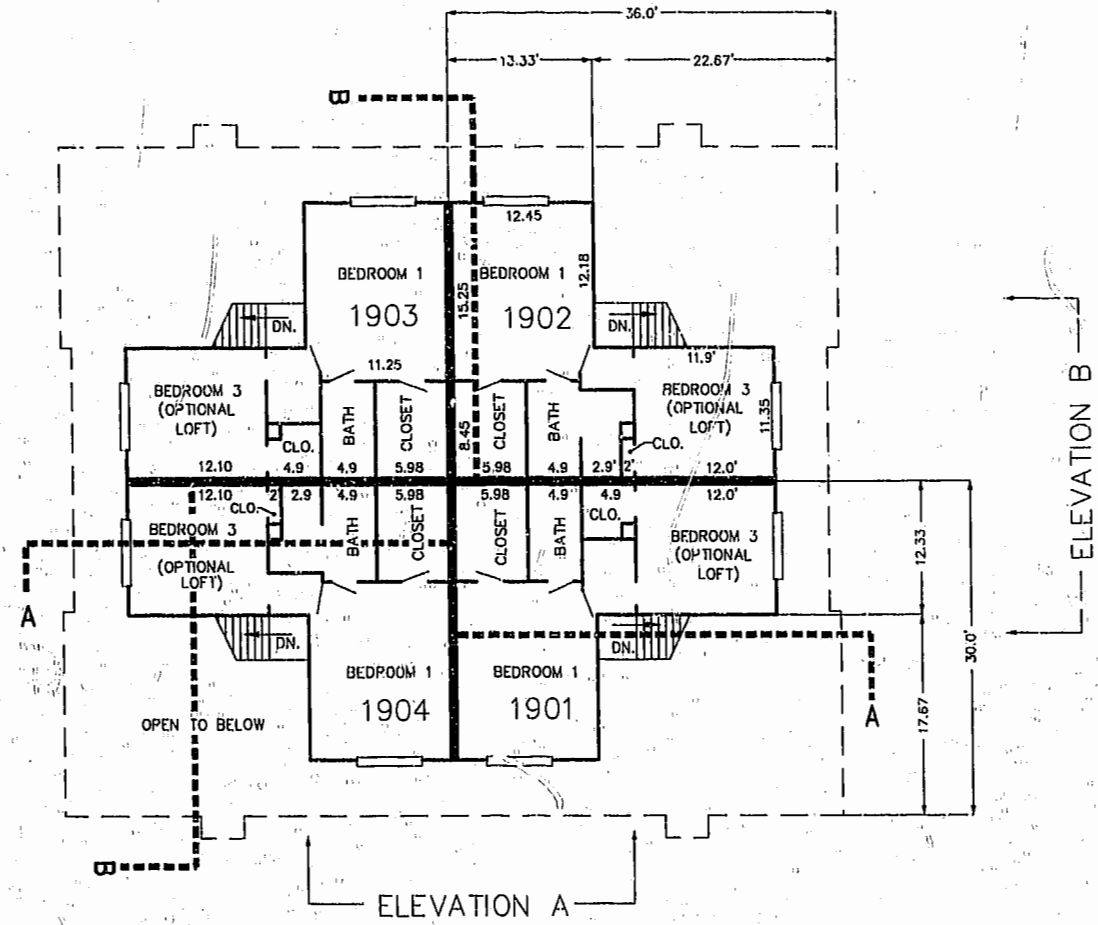


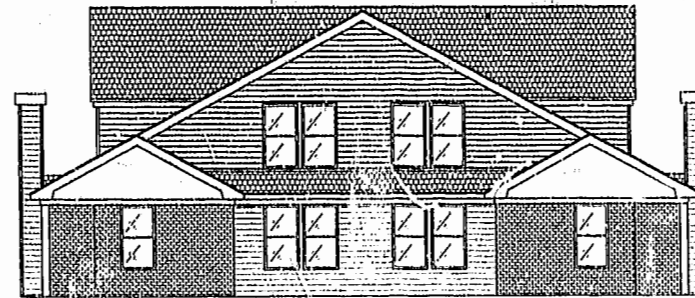
FIRST FLOOR PLAN  
(UNIT #1902 IS TYPICAL)



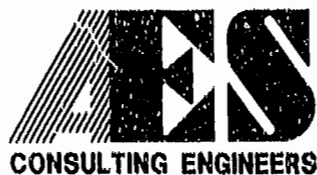
SECOND FLOOR PLAN  
(UNIT #1902 IS TYPICAL)



ELEVATION A



ELEVATION B



5248 Olde Towne Road, Suite 1  
Williamsburg, Virginia 23188  
(757) 253-0040  
Fax (757) 220-8994

PLAT OF CONDOMINIUM  
WESTGATE AT WILLIAMSBURG,  
A CONDOMINIUM  
PHASE FIFTEEN  
OWNED BY: 752 L.L.C.,  
A VIRGINIA LIMITED LIABILITY COMPANY  
CITY OF WILLIAMSBURG VIRGINIA



Williamsburg/James City County		PLAT RECORDED BY
Recorded 6 days of July 2001	5/25/01	P.B. NO. 822 PAGE 35-40
DOCUMENT NO. 002221	AD. SEDERT	
	NO. 002221	
BETSY B. WOOLRIDGE, CLERK OF CIRCUIT COURT		
No. DATE	REVISION / COMMENT / NOTE	BY

Designed GTW/ADS	Drawn JFS
Scale 1" = 10'	Date 5/25/01
Project No. 8395-6	
Drawing No. 5 OF 6	

05.23.01 - 05.38 8395P155.DWG