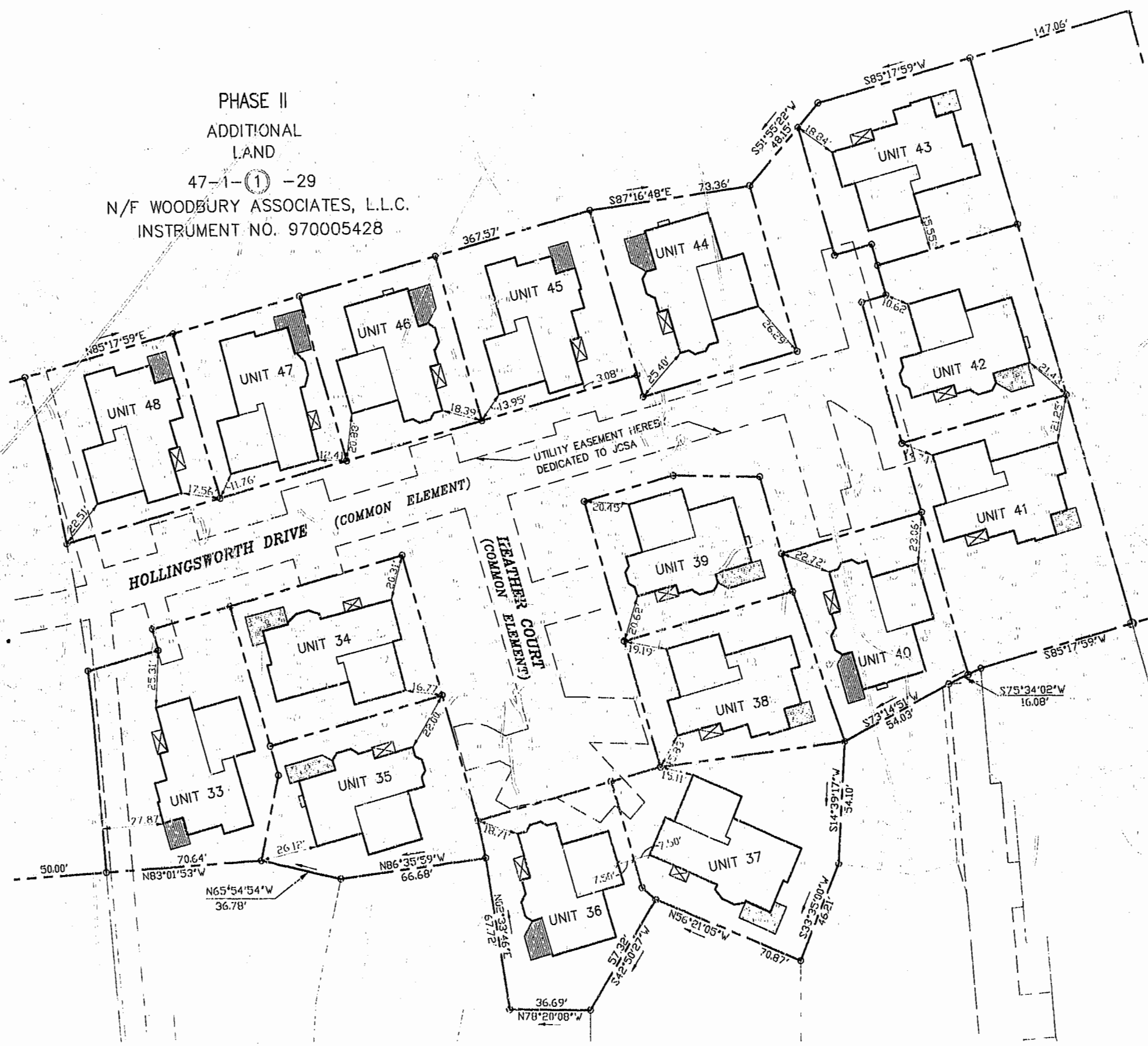


CONDOMINIUM PLAT
OF
SECTION 3
(A PORTION OF SECTION 2, PHASE II)
BRANDON WOODS
JAMES CITY COUNTY, VIRGINIA
SCALE: 1"=30' DATE: 6/26/01
SHEET 3 OF 4

PHASE II
ADDITIONAL
LAND
47-1-(1)-29
N/F WOODBURY ASSOCIATES, L.L.C.
INSTRUMENT NO. 970005428



PLAT RECORDED IN
P.L. NO. 82, PAGE 31-34

Williamsburg/James City County
Recorded 6 day of July, 2001
DOCUMENT # 0001201
CLERK
BETSY R. WOODBRIDGE, CLERK OF CIRCUIT COURT



Engineers Planners Surveyors
Landscape Architects Environmental Consultants
4029 IRONBOUND ROAD, SUITE 100
WILLIAMSBURG, VA 23188
TEL (757) 253-2975 FAX (757) 229-0049

