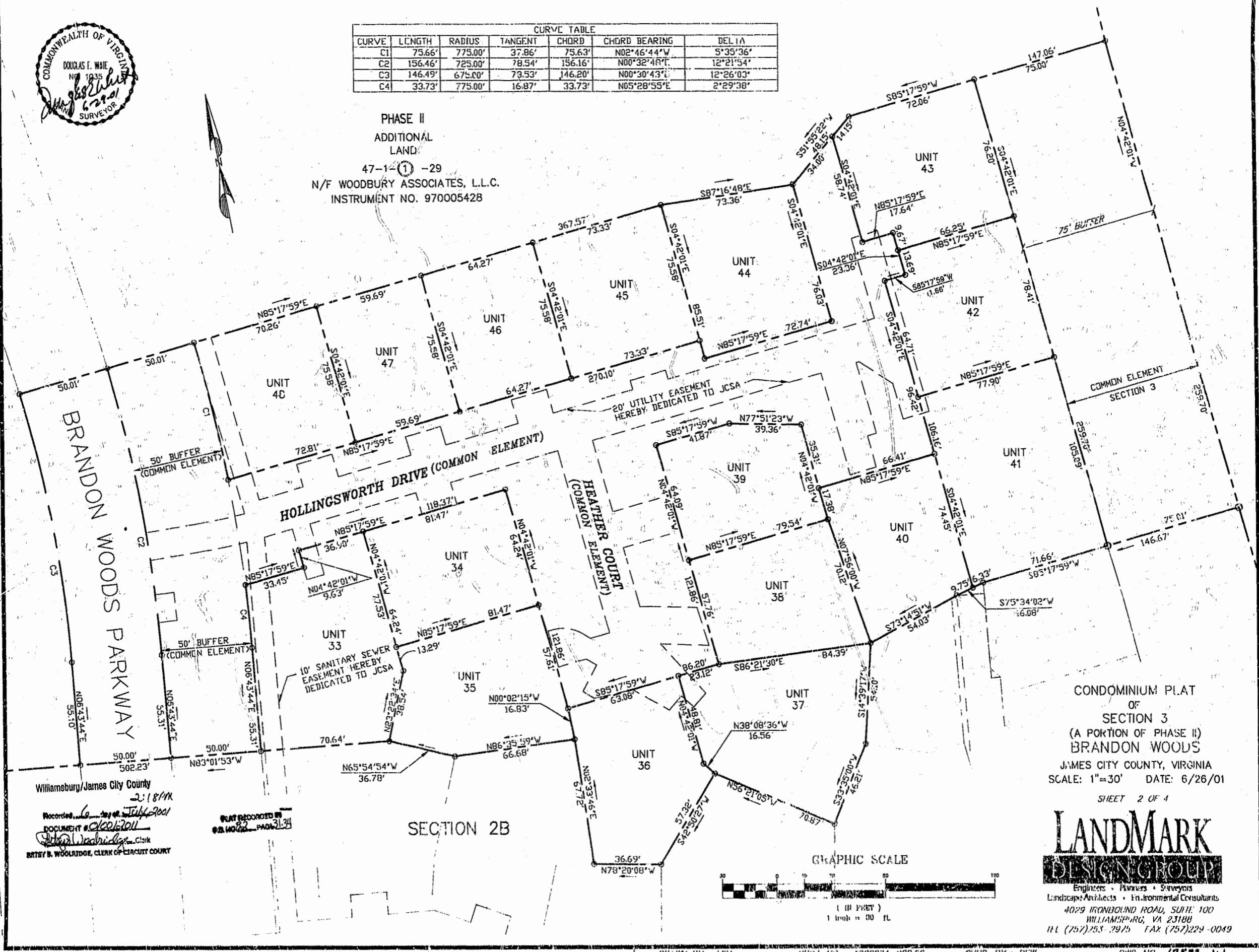




CURVE TABLE						
CURVE	LENGTH	RADIUS	TANGENT	CHORD	CHORD BEARING	DELTA
C1	75.66'	775.00'	37.86'	75.63'	N02°46'44"W	5°35'36"
C2	156.46'	725.00'	78.54'	156.16'	N00°32'48"W	12°21'54"
C3	146.49'	675.00'	73.53'	146.20'	N00°30'43"W	12°26'03"
C4	33.73'	775.00'	16.87'	33.73'	N05°28'55"E	2°29'38"

PHASE II
 ADDITIONAL LAND
 47-1-(1)-29
 N/F WOODBURY ASSOCIATES, L.L.C.
 INSTRUMENT NO. 970005428



Williamsburg/James City County
 Recorded 2:18 PM
 DOCUMENT # 00012011
 BRYAN B. WOOLRIDGE, CLERK OF CIRCUIT COURT

PLAT RECORDED IN
 2011
 PAGE 31-34

SECTION 2B

CONDOMINIUM PLAT
 OF
 SECTION 3
 (A PORTION OF PHASE II)
 BRANDON WOODS
 JAMES CITY COUNTY, VIRGINIA
 SCALE: 1"=30' DATE: 6/26/01

SHEET 2 OF 4



Engineers • Planners • Surveyors
 Landscape Architects • Environmental Consultants
 4029 IRONBOUND ROAD, SUITE 100
 WILLIAMSBURG, VA 23188
 TEL (757) 233-3915 FAX (757) 229-0049

