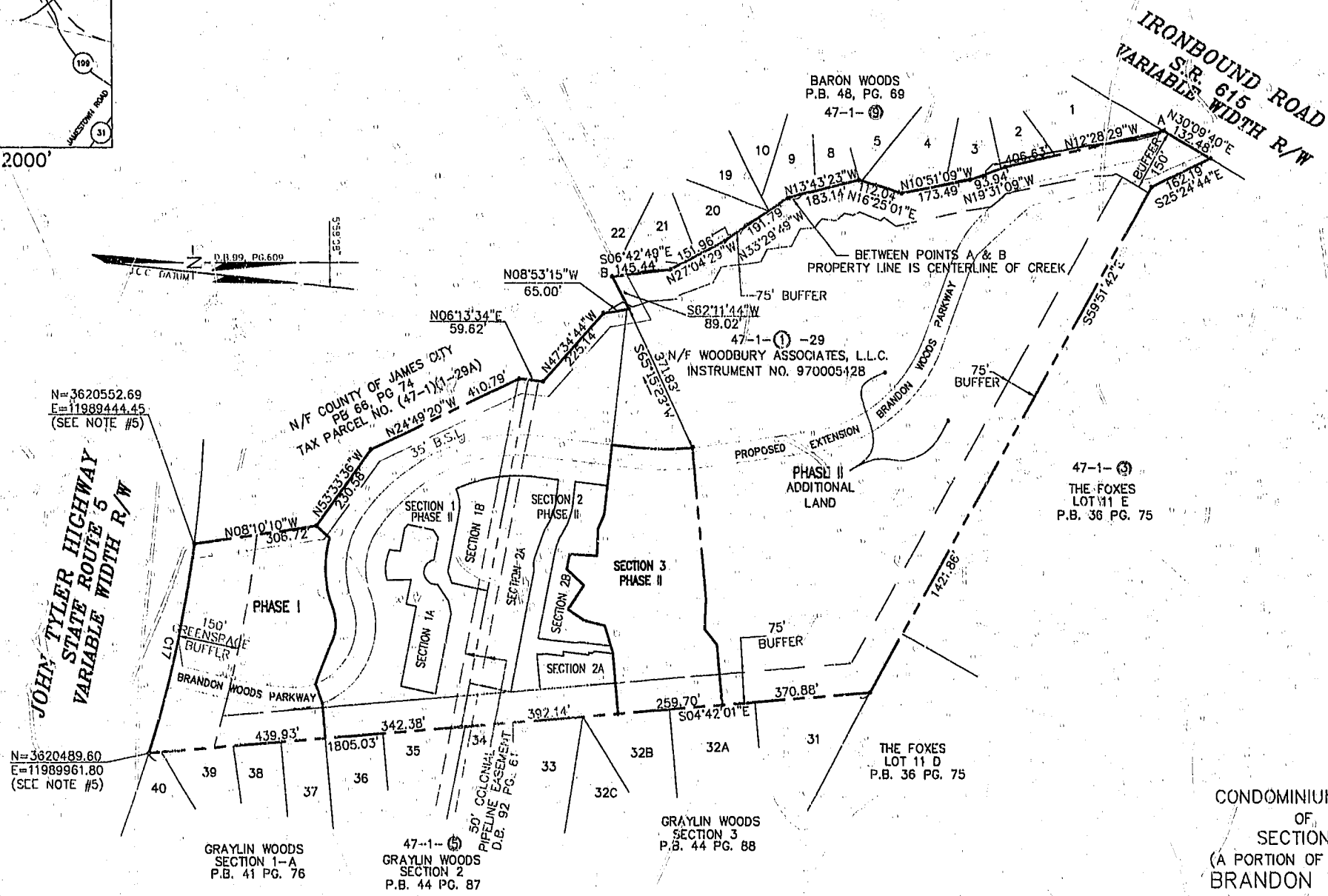


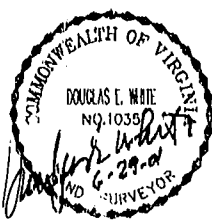
CURVE	LENGTH	RADIUS	TANGENT	CHORD BEARING	CHORD	DELTA
C17	521.88'	2904.79'	261.65'	N77°04'44"W	521.18'	10°17'38"



N=3620552.69
E=119889444.45
(SEE NOTE #5)

N=3620489.60
E=119889961.80
(SEE NOTE #5)

Williamsburg/James City County
Recorded 6 day of July 2001
DOCUMENT NO. 1006301
Steph D. Woodridge Clerk
METSY B. WOODRIDGE, CLERK OF CIRCUIT COURT



STATE OF VIRGINIA, COUNTY OF JAMES CITY
IN THE CLERK'S OFFICE OF THE CIRCUIT COURT THE PLAT SHOWN HEREON WAS PRESENTED AND ADMITTED TO RECORD
July 6, 2001 AS THE LAW DIRECTS.
TESTED: *Steph D. Woodridge* CLERK @ 2:18 PM
PLAT BOOK 82 PAGE 31-34

CONDOMINIUM PLAT
OF
SECTION 3
(A PORTION OF PHASE II)
BRANDON WOODS
JAMES CITY COUNTY, VIRGINIA
SCALE: 1"=200' DATE: 6/28/01

