

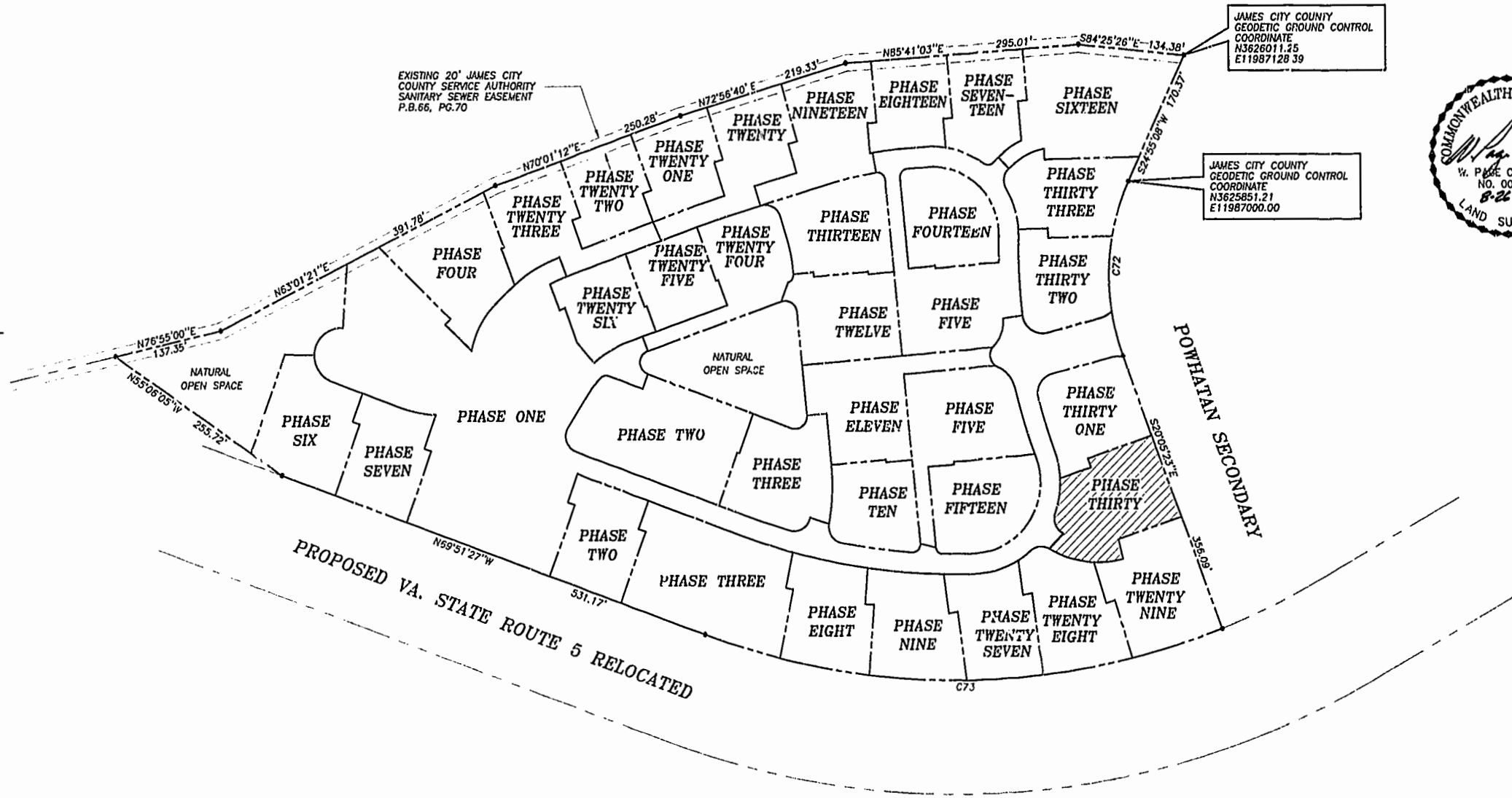
PLAT OF SUBDIVISION
WATERFORD
 AT
POWHATAN SECONDARY
 PHASE THIRTY
 BERKELEY DISTRICT
 JAMES CITY COUNTY, VIRGINIA

DATE: 10/21/98 SHEET 2 OF 3 SCALE: 1"=100'
 PROJECT NO: 97-008 DRAWN BY: SJB

SA SLEDD & ASSOCIATES, P.C.
 ENGINEERS PLANNERS SURVEYORS
 11832 ROCK LANDING DRIVE, SUITE 203
 NEWPORT NEWS, VIRGINIA 23606
 (757) 873-3386

00'32'24"
 JAMES CITY COUNTY
 GEODETIC GROUND CONTROL
 MERIDIAN
 PLAT BOOK 66, PAGE 70

NOW OR FORMERLY
 POWHATAN ENTERPRISES, INC.

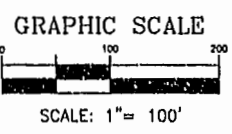


JAMES CITY COUNTY
 GEODETIC GROUND CONTROL
 COORDINATE
 N3828011.25
 E11987128.39

JAMES CITY COUNTY
 GEODETIC GROUND CONTROL
 COORDINATE
 N3625851.21
 E11987000.00

CURVE DATA

NUMBER	DELTA	RADIUS	LENGTH	TANGENT	CHORD	CHORD BEARING
C72	45°00'31"	280.00'	219.95'	116.00'	214.34'	S02°24'52"W
C73	41°26'14"	924.91'	668.91'	349.84'	654.43'	S89°25'26"W



Williamsburg/James City County
 Recorded 10:06 AM 26 day of June 2001
 DOCUMENT # 0100
 Betsy B. Woolridge, Clerk
 BETSY B. WOOLRIDGE, CLERK