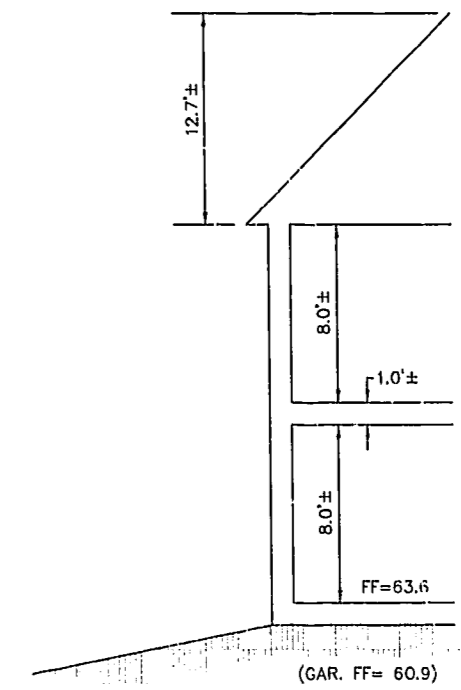
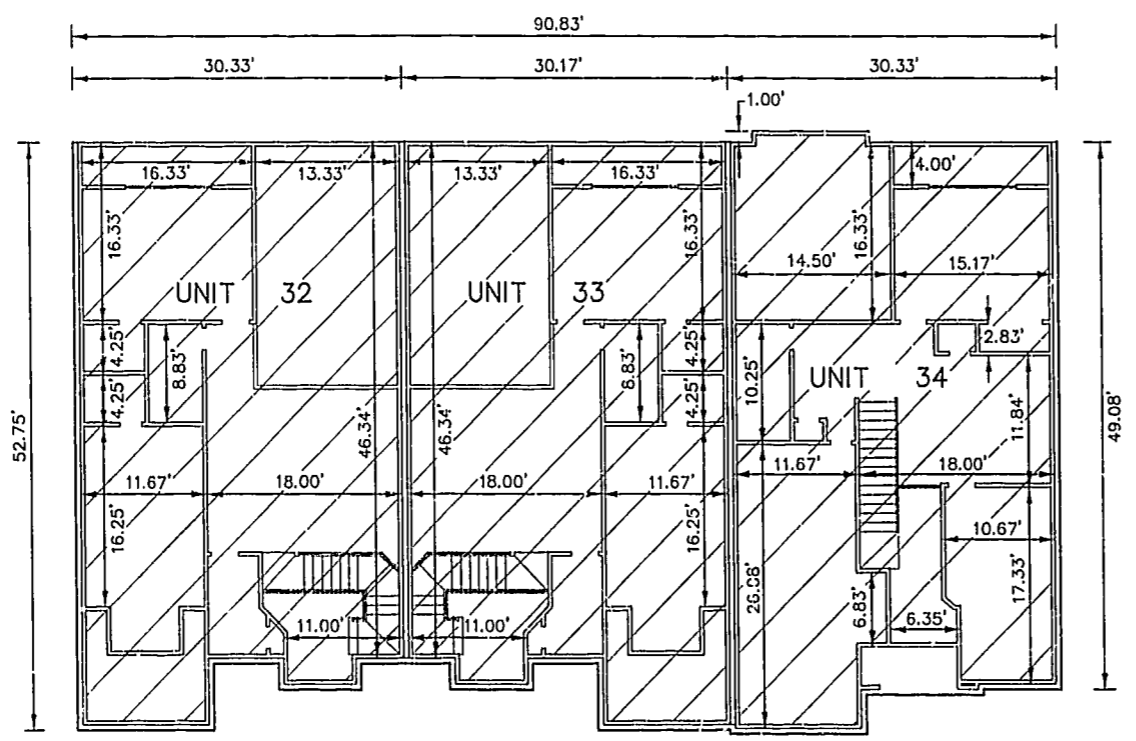


EXHIBIT B-7
 SUPPLEMENTAL CONDOMINIUM PLAN
 OF
 WYNDHAM PLANTATION
 CONDOMINIUM

WILLIAMSBURG, VIRGINIA
 SCALE: 1"=10' JUNE 4, 2001
 JOHN E. SIRINE AND ASSOCIATES, LTD.
 SURVEYORS • ENGINEERS • PLANNERS
 VIRGINIA BEACH, VIRGINIA
 (757) 486-4910

- NOTES:
1. BUILDING DIMENSIONS SHOWN HEREON ARE INTERIOR DIMENSIONS. THESE DIMENSIONS ARE IN FEET AND WERE TAKEN FROM PLANS SUPPLIED ENTITLED "WYNDHAM PLANTATION AT WILLIAMSBURG, FLOOR PLANS" BY PROGRESSIVE DESIGNS DATED 11/19/98.
 2. INTERIOR UNIT CONFIGURATIONS AND PARTITIONS AS DEPICTED HEREON ARE FOR THE PURPOSE OF ILLUSTRATION ONLY AND MAY NOT REPRESENT THE INTERIOR OF A UNIT AS ACTUALLY CONSTRUCTED.

SECOND FLOOR - BUILDING 24
 SCALE: 1"=10'

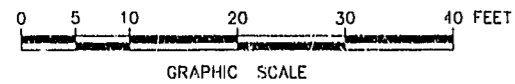


SCALE: 1"=5'

UNIT AREA

PHASE	UNIT No.	UNIT ADDRESS	UNIT AREA
8	32	413 ZELKOVA ROAD	2,101 S.F.
8	33	417 ZELKOVA ROAD	2,101 S.F.
8	34	421 ZELKOVA ROAD	1,997 S.F.

THE UNDERSIGNED CERTIFIES THAT THESE PLANS ARE ACCURATE AND COMPLY WITH THE PROVISIONS OF CODE OF VIRGINIA, SECTION 55-79.58.B AND THAT ALL UNITS OR PORTIONS THEREOF DEPICTED HEREON AND ALL COMMON ELEMENTS HAVE BEEN SUBSTANTIALLY COMPLETED.



Williamsburg/James City County
 Recorded 11:32 AM 9 day of June 2001
 DOCUMENT # 010816
 By *Charles H. ...* Clerk
 BETSY D. WOOLRIDGE, CLERK OF CIRCUIT COURT

SIGNED: *Jeffrey D. Williams*
 JEFFREY D. WILLIAMS, L.S.

PLAT RECORDED IN
 P.D. NO. 81 PAGE 96-99

