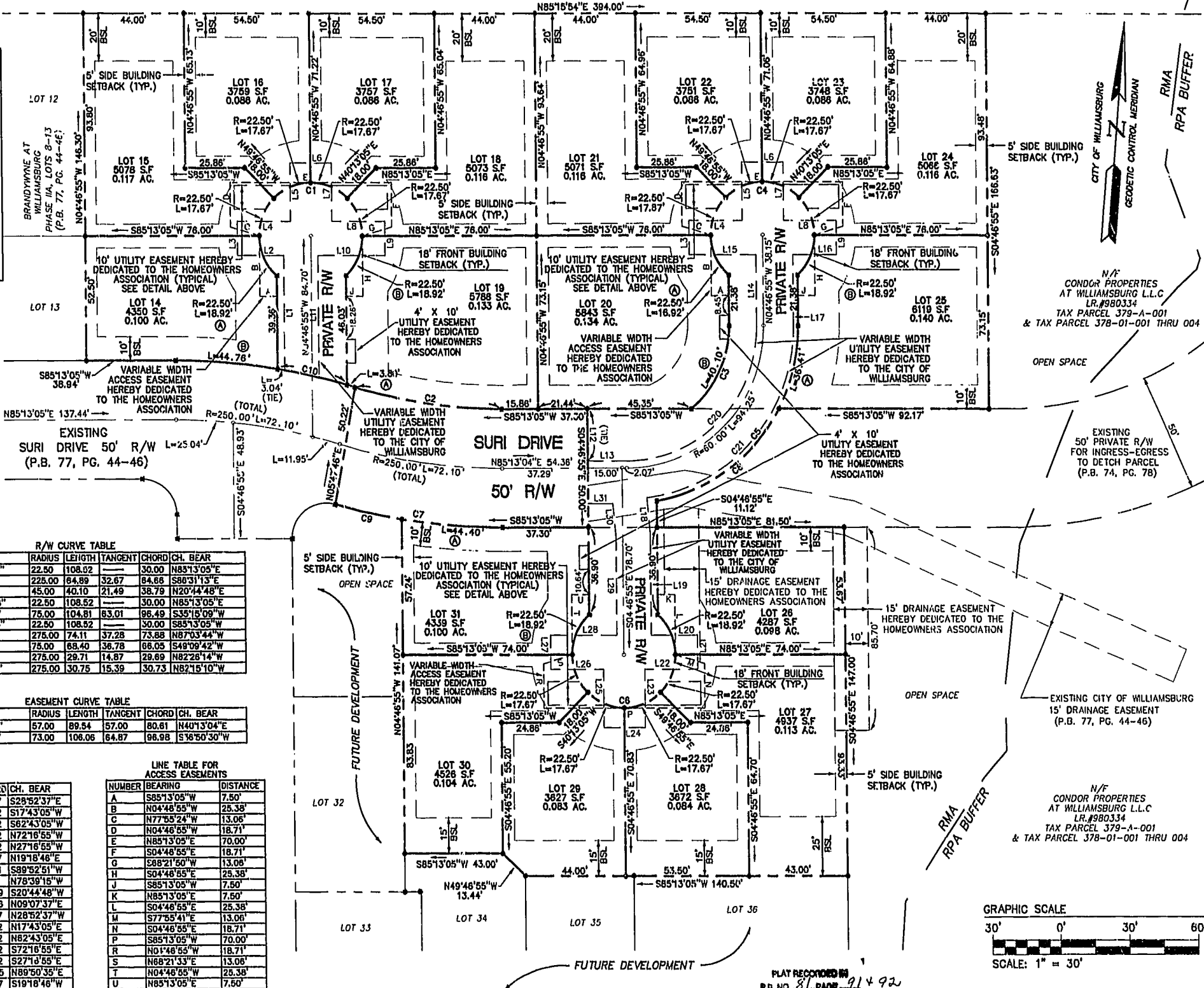
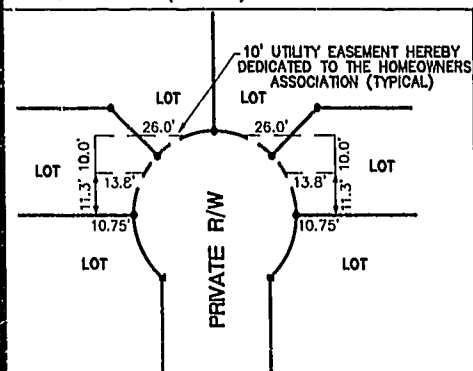


505.65± TO R/W OF
MERRIMAC TRAIL (S.R. 143)

N/F
THOMAS D. MAHONEY
D.B.55, P.13 Y.C.
TAX PARCEL 378-02-B

212.04± TO P/L OF
ROSAUE S. DETCH

EASEMENT DETAIL (TYPICAL)



LINE TABLE FOR UTILITY EASEMENTS

NUMBER	BEARING	DISTANCE
L1	N04°46'55"W	48.40'
L2	S85°13'05"W	20.00'
L3	N04°46'55"W	14.42'
L4	N85°13'05"E	23.00'
L5	N04°46'55"W	24.58'
L6	N85°13'05"E	18.00'
L7	S04°46'55"E	24.58'
L8	N85°13'05"E	23.00'
L9	S04°46'55"E	14.42'
L10	S85°13'05"W	29.90'
L11	S04°46'55"E	51.48'
L12	S04°46'55"E	22.00'
L13	N85°13'05"E	17.07'
L14	N04°46'55"W	29.90'
L15	S85°13'05"W	29.90'
L16	S85°13'05"W	19.08'
L17	S04°46'55"E	29.90'
L18	S09°44'02"E	15.65'
L19	S04°46'55"E	42.33'
L20	N85°13'05"E	20.04'
L21	S04°46'55"E	14.42'
L22	S85°13'05"W	23.04'
L23	S04°46'55"E	24.58'
L24	S85°13'05"W	18.00'
L25	N04°46'55"W	24.58'
L26	S85°13'05"W	23.00'
L27	N04°46'55"W	14.42'
L28	N85°13'05"E	28.98'
L29	N04°46'55"W	41.58'
L30	N09°44'02"E	13.78'
L31	S85°13'05"W	10.81'

R/W CURVE TABLE

NUMBER	DELTA	RADIUS	LENGTH	TANGENT	CHORD	CH. BEAR
C1	278°22'48"	22.50	108.92	30.00	30.00	N85°13'05"E
C2	163°12'28"	225.00	84.89	32.67	84.68	S80°31'13"E
C3	51°03'27"	45.00	40.10	21.49	38.79	N20°44'48"E
C4	278°22'48"	22.50	108.92	30.00	30.00	N85°13'05"E
C5	80°04'09"	75.00	104.81	63.01	96.49	S35°15'09"W
C6	278°22'48"	22.50	108.92	30.00	30.00	S85°13'05"W
C7	15°26'23"	275.00	74.11	37.28	73.88	N87°03'44"W
C8	52°15'04"	75.00	68.40	36.78	66.05	S49°09'42"W
C9	06°11'22"	275.00	29.71	14.87	29.69	N82°28'14"W
C10	06°24'22"	275.00	30.75	15.39	30.73	N82°15'10"W

EASEMENT CURVE TABLE

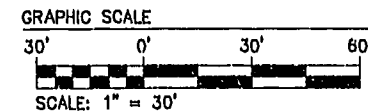
NUMBER	DELTA	RADIUS	LENGTH	TANGENT	CHORD	CH. BEAR
C20	90°00'00"	57.00	89.54	57.00	80.81	N40°13'04"E
C21	83°14'51"	73.00	106.06	64.87	96.98	S°18'50'30"W

LOT CURVE TABLE

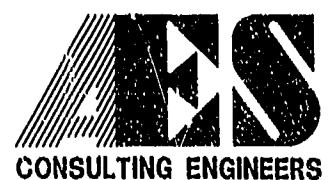
LOT	DELTA	RADIUS	LENGTH	TANGENT	CHORD	CH. BEAR
14A AND 20A	48°11'23"	22.50	18.92	10.06	18.37	S28°52'37"E
15 AND 21	45°00'00"	22.50	17.67	9.32	17.22	S17°43'05"W
16 AND 22	45°00'00"	22.50	17.67	9.32	17.22	S62°43'05"W
17 AND 23	45°00'00"	22.50	17.67	9.32	17.22	N72°16'55"W
18 AND 24	45°00'00"	22.50	17.67	9.32	17.22	N27°16'55"W
19B AND 25B	48°11'23"	22.50	18.92	10.06	18.37	N19°18'48"E
14B	09°19'34"	275.00	44.76	22.43	44.71	S89°52'51"W
19A	00°47'29"	275.00	3.80	1.80	3.80	N78°39'15"W
20B	51°03'27"	45.00	40.10	21.49	38.79	S20°44'48"W
25A	27°49'05"	75.00	36.41	18.57	36.06	N09°07'37"E
26	48°11'23"	22.50	18.92	10.06	18.37	N28°52'37"W
27	45°00'00"	22.50	17.67	9.32	17.22	N17°43'05"E
28	45°00'00"	22.50	17.67	9.32	17.22	N82°43'05"E
29	45°00'00"	22.50	17.67	9.32	17.22	S72°16'55"E
30	45°00'00"	22.50	17.67	9.32	17.22	S27°16'55"E
31A	09°15'01"	273.00	44.40	22.25	44.35	N89°50'35"E
31B	48°11'23"	22.50	18.92	10.06	18.37	S19°18'48"W

LINE TABLE FOR ACCESS EASEMENTS

NUMBER	BEARING	DISTANCE
A	S85°13'05"W	7.50'
B	N04°46'55"W	25.38'
C	N77°55'24"W	13.06'
D	N04°46'55"W	18.71'
E	N85°13'05"E	70.00'
F	S04°46'55"E	18.71'
G	S88°21'50"W	13.06'
H	S04°46'55"E	25.38'
J	S85°13'05"W	7.50'
K	N85°13'05"E	7.50'
L	S04°46'55"E	25.38'
M	S77°55'41"E	13.06'
N	S04°46'55"E	18.71'
P	S85°13'05"W	70.00'
R	N01°48'55"W	18.71'
S	N68°21'33"E	13.06'
T	N04°46'55"W	25.38'
U	N85°13'05"E	7.50'



PLAT RECORDED IN
P.B. NO. 81, PAGE 91 + 92



2548 Olde Towne Road, Suite 1
Williamsburg, Virginia 23188
(757) 253-0040
Fax (757) 220-8994

PLAT OF SUBDIVISION
BRANDYWYNE
AT WILLIAMSBURG
PHASE II B, LOTS 14 - 31
OWNER/DEVELOPER: CONDOR PROPERTIES AT WILLIAMSBURG, L.L.C.
CITY OF WILLIAMSBURG VIRGINIA



No.	DATE	REVISION / COMMENT / NOTE	BY

Williamsburg/James City County
12:18 PM
Recorded 7 day of Dec 2001
DOCUMENT # 010810
Detsy B. Woolridge, Clerk of Circuit Court

Designed	Drawn
HWP/CWG	JFS
Scale	Date
1"=30'	9/18/00
Project No.	
8453	
Drawing No.	
2 OF 2	