

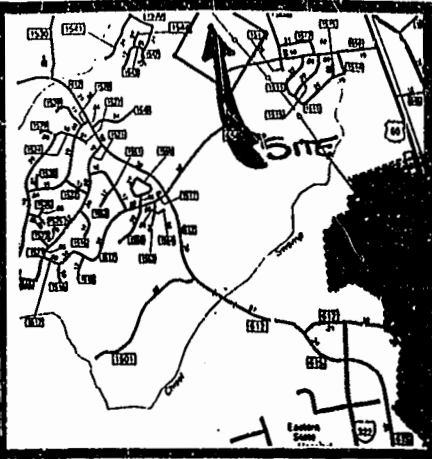
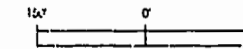
PLAT OF PROPERTY Book 81 PAGE 81
TO BE CONVEYED

FROM
THE SCOTT TRUST
BEING

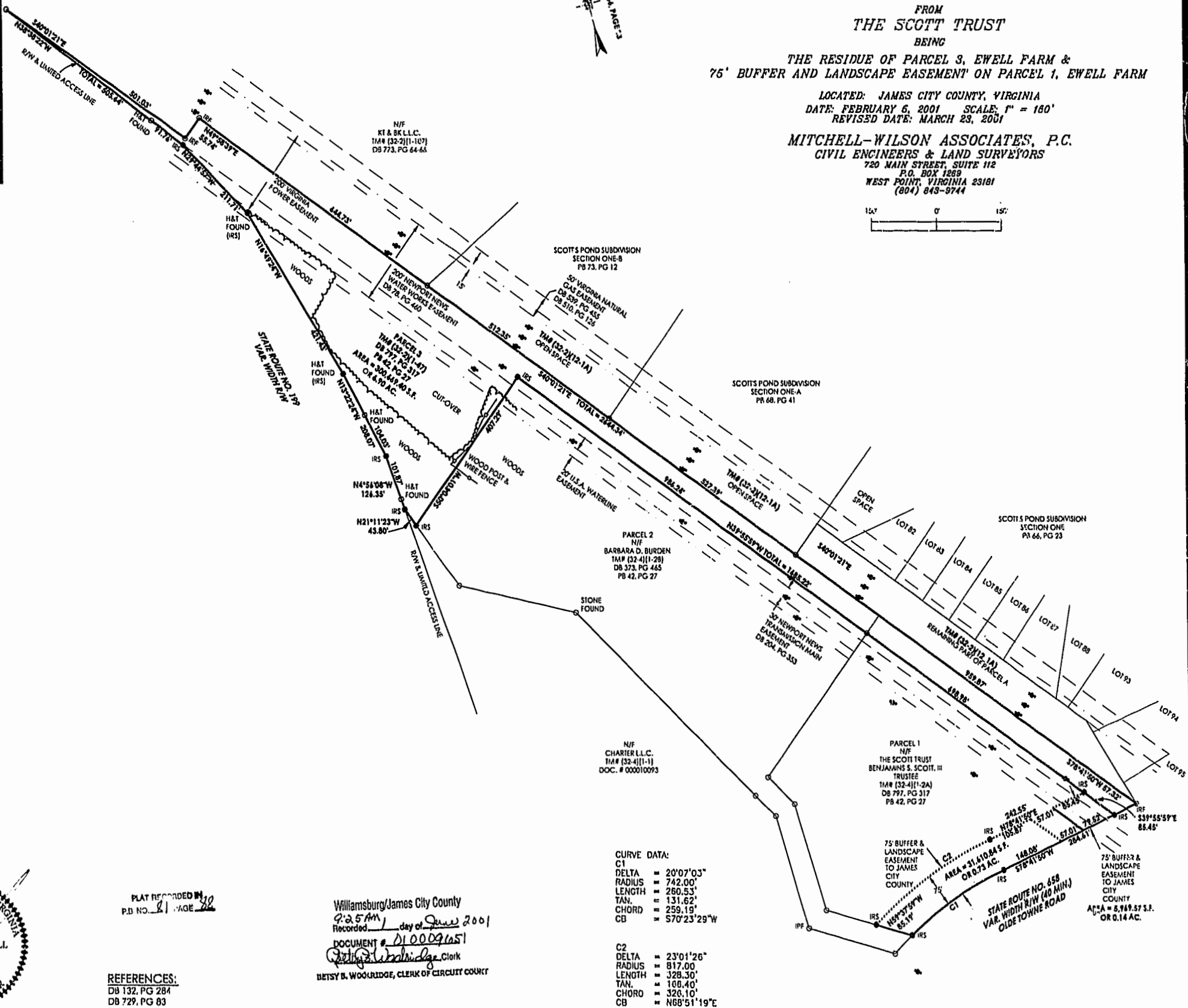
THE RESIDUE OF PARCEL 3, EWELL FARM &
75' BUFFER AND LANDSCAPE EASEMENT ON PARCEL 1, EWELL FARM

LOCATED: JAMES CITY COUNTY, VIRGINIA
DATE: FEBRUARY 6, 2001 SCALE: 1" = 160'
REVISED DATE: MARCH 23, 2001

MITCHELL-WILSON ASSOCIATES, P.C.
CIVIL ENGINEERS & LAND SURVEYORS
720 MAIN STREET, SUITE 112
P.O. BOX 1288
WEST POINT, VIRGINIA 23181
(804) 843-9744



VICINITY MAP



PLAT RECORDED IN
P.B. NO. 81 PAGE 81

REFERENCES:
DB 132, PG 284
DB 729, PG 83
SHPB 8, PG 5 254-257

Williamsburg/James City County
9:25 AM
Recorded day of June 2001
DOCUMENT # D100091651
Betsy D. Woolridge, Clerk
BETSY D. WOOLRIDGE, CLERK OF CIRCUIT COURT

CURVE DATA:
C1
DELTA = 20°07'03"
RADIUS = 742.00'
LENGTH = 260.53'
TAN. = 131.62'
CHORD = 259.19'
CB = 57°23'29"W

C2
DELTA = 23°01'26"
RADIUS = 817.00'
LENGTH = 328.30'
TAN. = 108.40'
CHORD = 326.10'
CB = N68°51'19"E