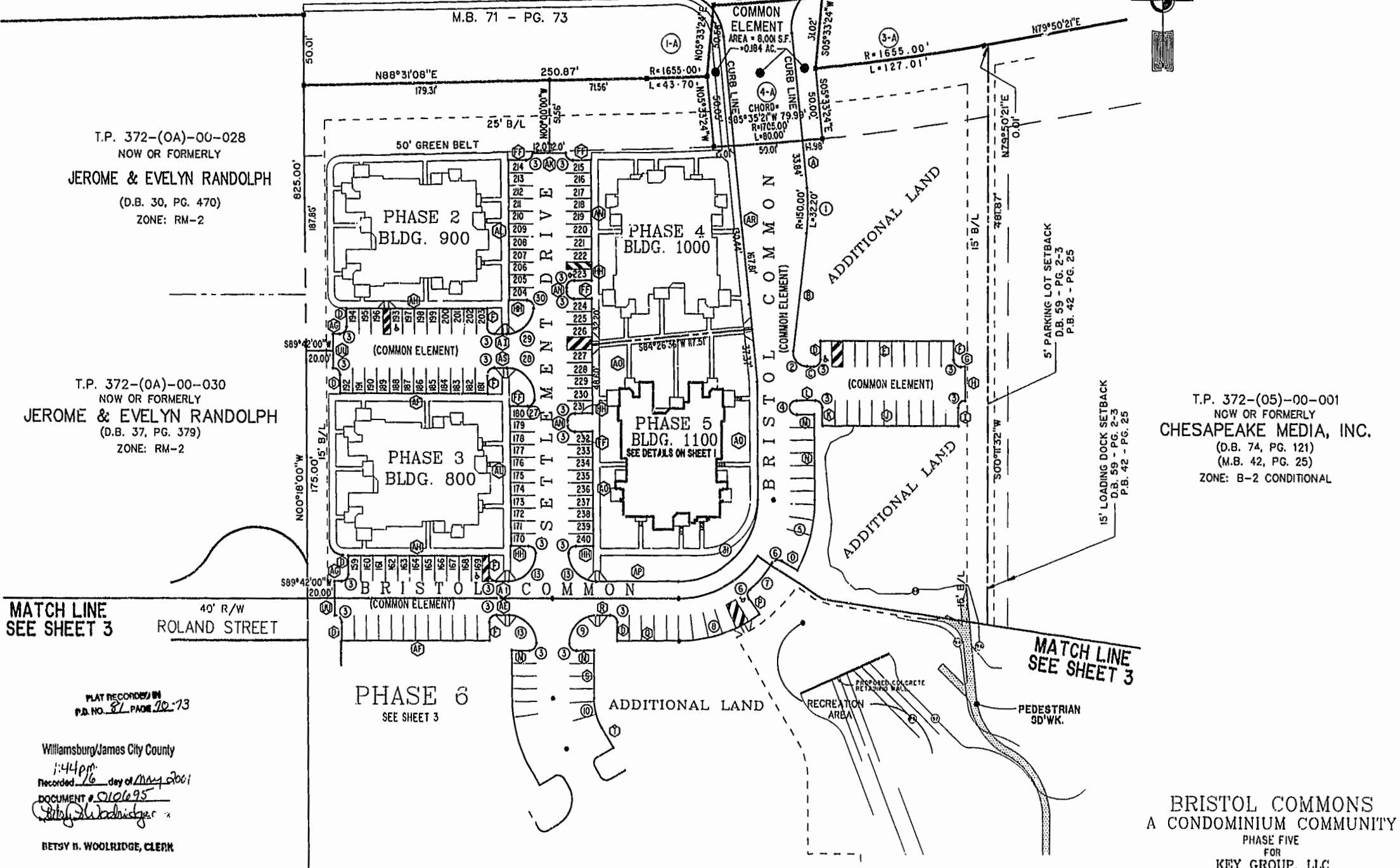


COLLEGE OF WILLIAM & MARY

IRON BOUND ROAD



T.P. 372-(OA)-00-028
NOW OR FORMERLY
JEROME & EVELYN RANDOLPH
(D.B. 30, PG. 470)
ZONE: RM-2

T.P. 372-(OA)-00-030
NOW OR FORMERLY
JEROME & EVELYN RANDOLPH
(D.B. 37, PG. 379)
ZONE: RM-2

T.P. 372-(05)-00-001
NGW OR FORMERLY
CHESAPEAKE MEDIA, INC.
(D.B. 74, PG. 121)
(M.B. 42, PG. 25)
ZONE: B-2 CONDITIONAL

MATCH LINE
SEE SHEET 3

MATCH LINE
SEE SHEET 3

PLAT RECORDED IN
P.D. NO. 27 PAGE 22-73

Williamsburg/James City County
1:44pm
Recorded 16 day of May 2001
DOCUMENT # 010695
Betsy B. Woolridge

BETSY B. WOOLRIDGE, CLERK

BRISTOL COMMONS
A CONDOMINIUM COMMUNITY
PHASE FIVE
FOR
KEY GROUP, LLC
CITY OF WILLIAMSBURG, VIRGINIA

Hassell & Polkes, P.C. Engineers Surveyors Planners Chesapeake, VA 23320 (757)547-9531	SIZE C	CONTRACT NO 98062	DISK/BOX 1236/15	FILENAME BRISTOL5.JWG	REV
SCALE: 1"=50'		DATE: 05/08/01	SHEET 2 of 4		