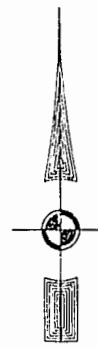


EXIST. 20' JAMES CITY COUNTY SERVICE AUTHORITY SAN. SEWER EASEMENT AS SHOWN IN AS-BUILT LOCATION. D.B. 141 - PG. 388



MATCH LINE - SEE SHEET 5

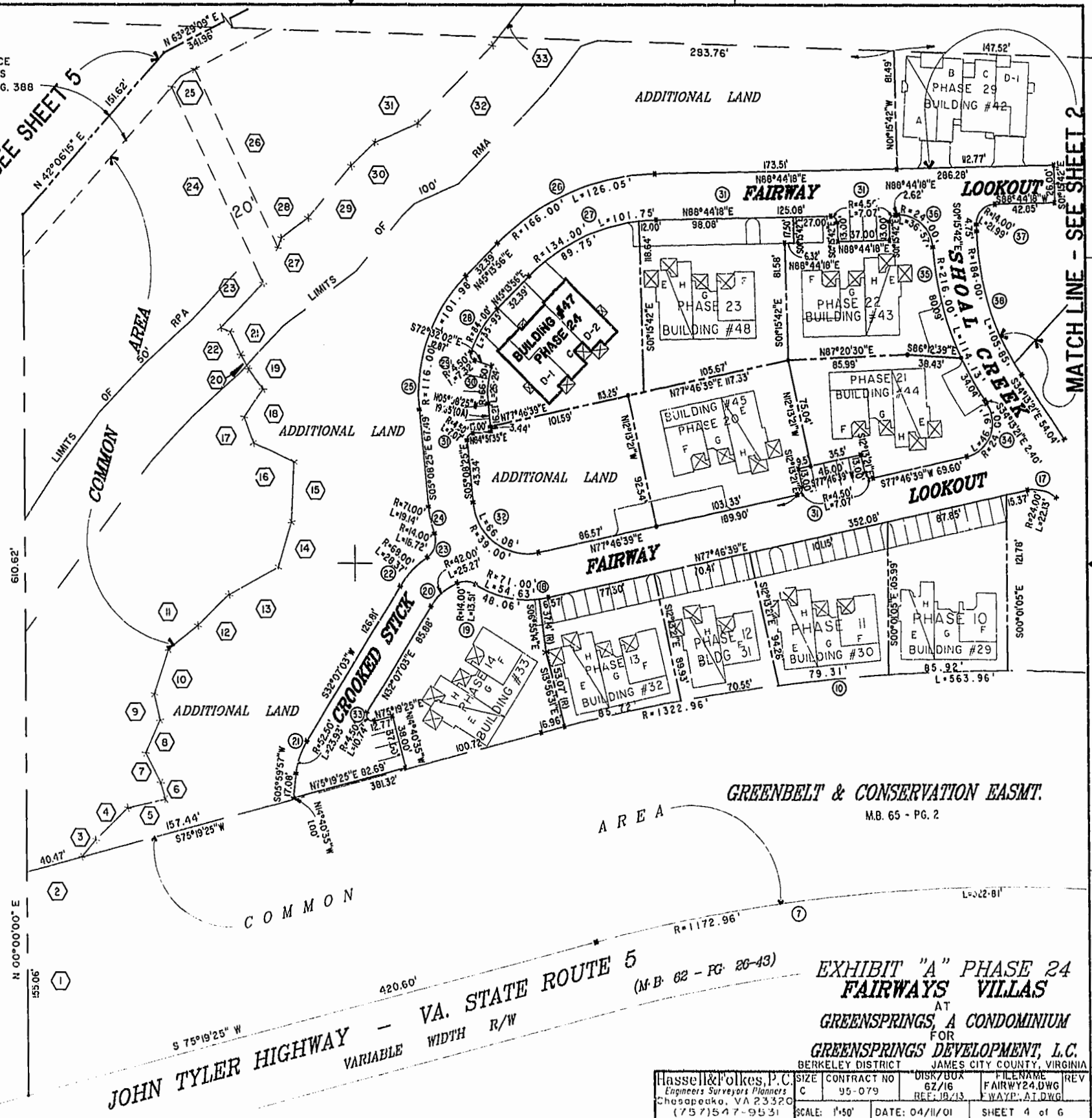
MATCH LINE - SEE SHEET 2

46-1-01-0-0001  
"GREENSPRINGS PLANTATION"  
(DB 322, PG 254)

PLAT RECORDED IN  
P.D. NO. 81 PAGE 267

Williamsburg/James City County  
2:42 p.m.  
Recorded 15 day of May 2001  
DOCUMENT # 010001653  
Betsy B. Woolridge, Clerk

BETSY B. WOOLRIDGE, CLERK



JOHN TYLER HIGHWAY - VA. STATE ROUTE 5  
VARIABLE WIDTH R/W

GREENBELT & CONSERVATION EASMT.  
M.B. 65 - PG. 2

EXHIBIT "A" PHASE 24  
FAIRWAYS VILLAS  
AT  
GREENSPRINGS, A CONDOMINIUM  
FOR  
GREENSPRINGS DEVELOPMENT, L.C.  
BERKELEY DISTRICT JAMES CITY COUNTY, VIRGINIA

Hassell & Folkes, P.C. Engineers Surveyors Planners Chesapeake, VA 23320 (757)547-9531	SIZE CONTRACT NO C 95-079	DISK/BOX 67/16 REF: JB/13	FILENAME FAIRWAY24.DWG FWAYP.A1.DWG	REV
SCALE: 1"=50'	DATE: 04/11/01	SHEET 4 of 6		