

EXHIBIT B-6
 SUPPLEMENTAL CONDOMINIUM PLAN
 OF
 WYNDHAM PLANTATION
 CONDOMINIUM

WILLIAMSBURG, VIRGINIA
 SCALE: 1"=10' MAY 2, 2001
 JOHN E. SIRINE AND ASSOCIATES, LTD.
 SURVEYORS • ENGINEERS • PLANNERS
 VIRGINIA BEACH, VIRGINIA
 (757) 486-4910

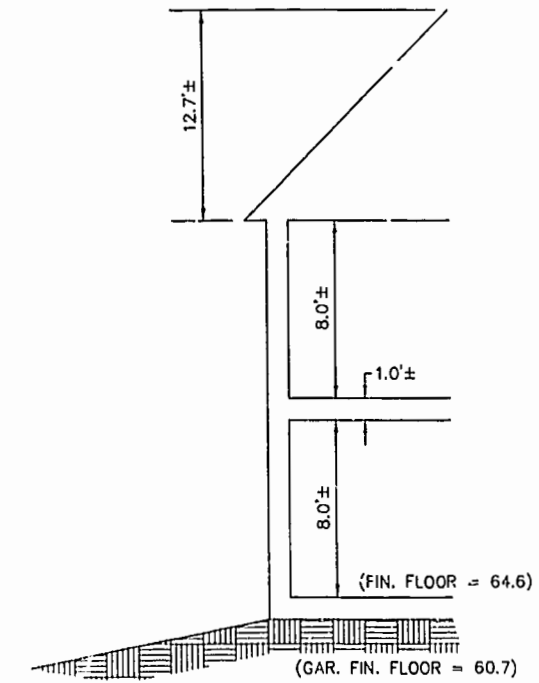
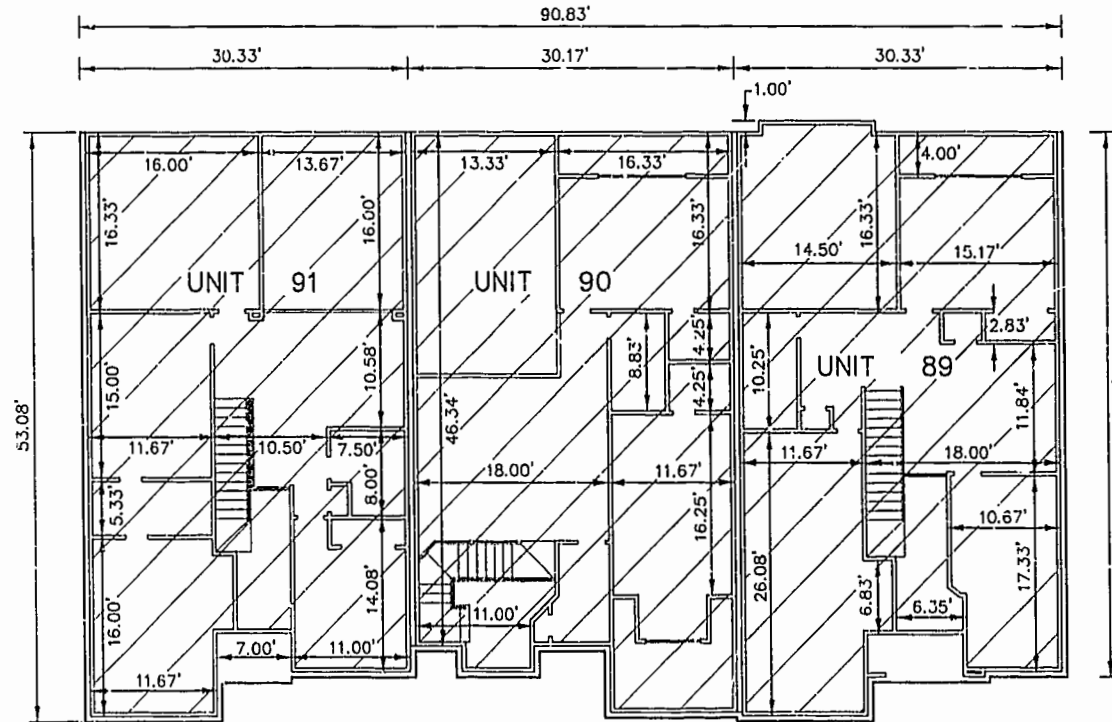
81 MAY 59

NOTES:

- BUILDING DIMENSIONS SHOWN HEREON ARE INTERIOR DIMENSIONS. THESE DIMENSIONS ARE IN FEET AND WERE TAKEN FROM PLANS SUPPLIED ENTITLED "WYNDHAM PLANTATION AT WILLIAMSBURG, FLOOR PLANS" BY PROGRESSIVE DESIGNS DATED 11/19/98.
- INTERIOR UNIT CONFIGURATIONS AND PARTITIONS AS DEPICTED HEREON ARE FOR THE PURPOSE OF ILLUSTRATION ONLY AND MAY NOT REPRESENT THE INTERIOR OF A UNIT AS ACTUALLY CONSTRUCTED.

SECOND FLOOR -- BUILDING 15

SCALE: 1"=10'



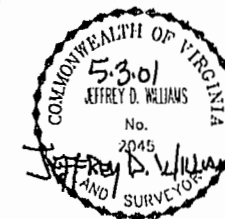
SCALE: 1"=5'

UNIT AREA

PHASE	UNIT No.	UNIT ADDRESS	UNIT AREA
7	89	400 ZELKOVA ROAD	2,048 S.F.
7	90	404 ZELKOVA ROAD	2,202 S.F.
7	91	408 ZELKOVA ROAD	2,102 S.F.

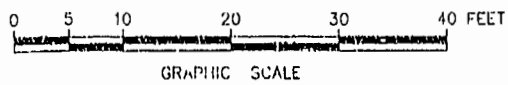
THE UNDERSIGNED CERTIFIES THAT THESE PLANS ARE ACCURATE AND COMPLY WITH THE PROVISIONS OF CODE OF VIRGINIA, SECTION 55-79.58.B AND THAT ALL UNITS OR PORTIONS THEREOF DEPICTED HEREON AND ALL COMMON ELEMENTS HAVE BEEN SUBSTANTIALLY COMPLETED.

SIGNED: JEFFREY D. WILLIAMS
 JEFFREY D. WILLIAMS, L.S.



Williamsburg/James City County
 Recorded 15th day of May, 2001
 DOCUMENT # 010284
 Betsy H. Woolridge, Clerk
 Betsy H. Woolridge, CLERK OF CIRCUIT COURT

PLAT RECORDED IN
 P.B. NO. 81 PAGE 26-59



GRAPHIC SCALE