

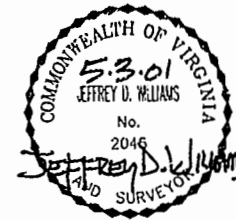
EXHIBIT B-6  
 SUPPLEMENTAL CONDOMINIUM PLAN  
 OF  
 WYNDHAM PLANTATION  
 CONDOMINIUM

WILLIAMSBURG, VIRGINIA  
 SCALE: 1"=100' MAY 2, 2001  
 JOHN E. SIRINE AND ASSOCIATES, LTD.  
 SURVEYORS • ENGINEERS • PLANNERS  
 VIRGINIA BEACH, VIRGINIA  
 (757) 486-4910

MERRIMAC TRAIL  
 (STATE ROUTE 143)  
 (FORMERLY STATE ROUTE 168)

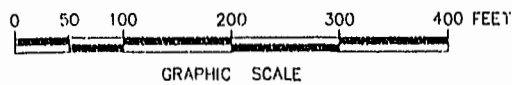
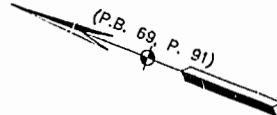
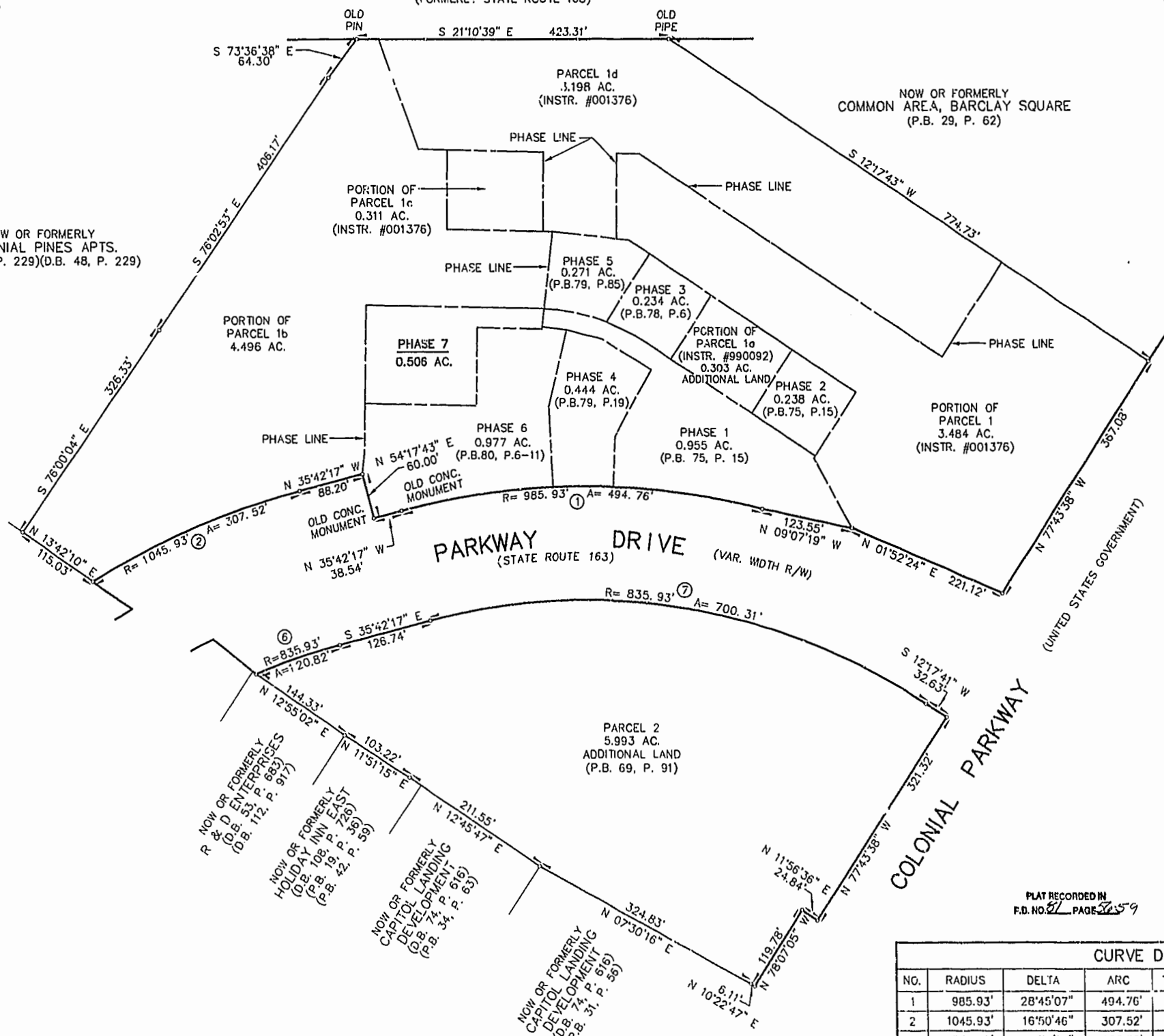
81 PAGE 56  
 THE UNDERSIGNED CERTIFIES THAT THESE PLATS ARE ACCURATE AND COMPLY WITH  
 THE PROVISIONS OF CODE OF VIRGINIA, SECTION 55-79.58.A AND THAT ALL UNITS  
 OR PORTIONS THEREOF DEPICTED HEREON AND ALL COMMON ELEMENTS HAVE BEEN  
 SUBSTANTIALLY COMPLETED.

SIGNED: Jeffrey D. Williams  
 JEFFREY D. WILLIAMS, L.S.



NOW OR FORMERLY  
 COLONIAL PINES APTS.  
 (D.B. 44, P. 229)(D.B. 48, P. 229)

NOW OR FORMERLY  
 COMMON AREA, BARCLAY SQUARE  
 (P.B. 29, P. 62)



PLAT RECORDED IN  
 F.D. NO. 87 PAGE 59

Williamsburg, James City County  
 Recorded 2 day of May 2001  
 DOCUMENT # 010084 12:06 pm  
Betsy B. Woolridge, Clerk  
 BETSY B. WOOLRIDGE, CLERK

CURVE DATA						
NO.	RADIUS	DELTA	ARC	TANGENT	CHORD	CHORD BEARING
1	985.93'	28°45'07"	494.76'	252.70'	489.58'	N 21°19'43" W
2	1045.93'	16°50'46"	307.52'	154.88'	306.42'	N 44°07'40" W
6	835.93'	08°16'51"	120.82'	60.51'	120.71'	S 39°50'42" E
7	835.93'	48°00'00"	700.31'	372.18'	680.01'	S 11°42'18" E