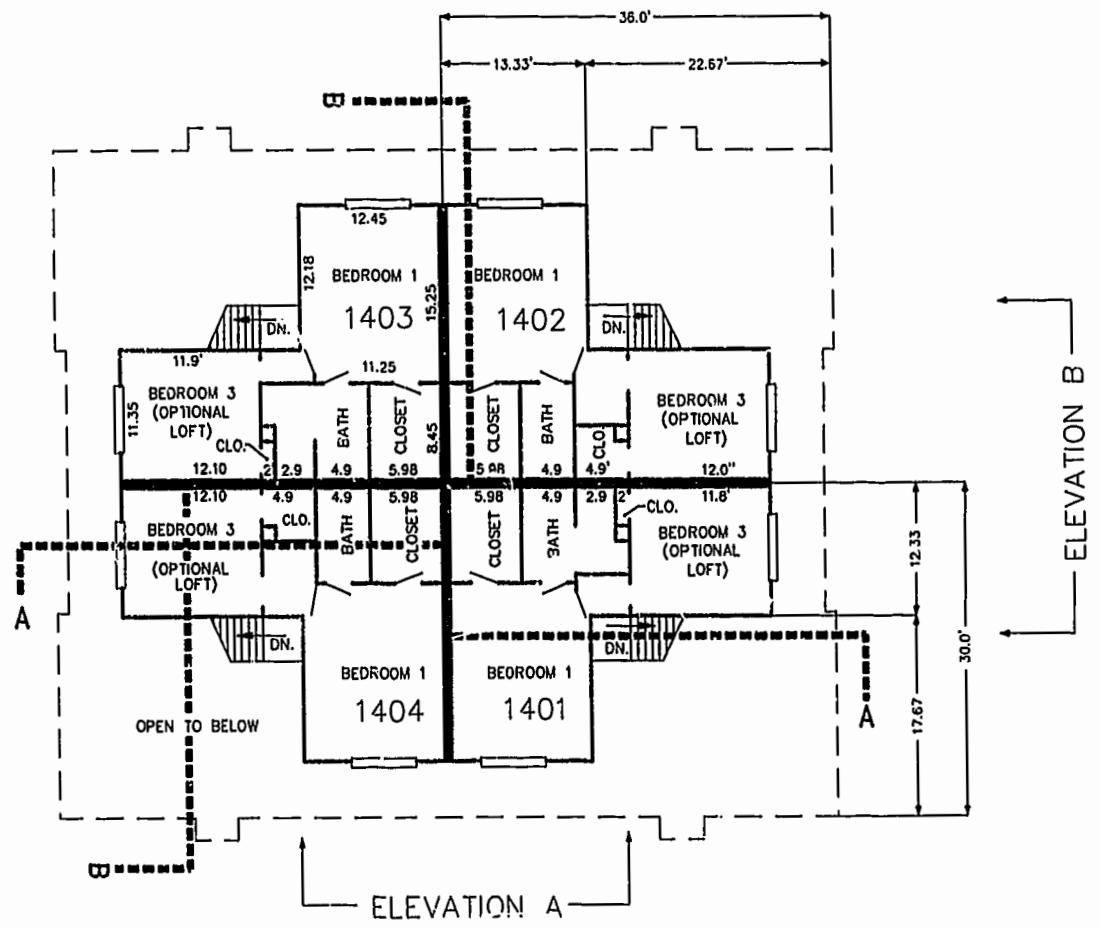
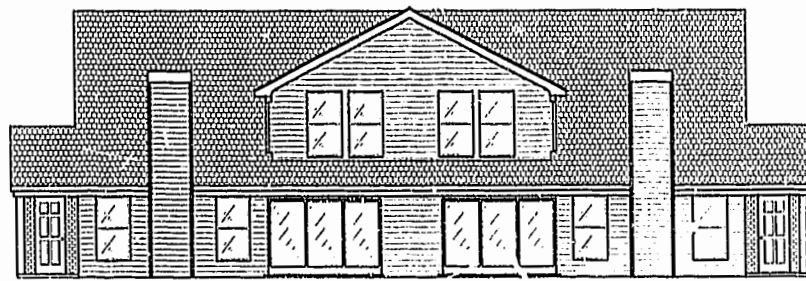


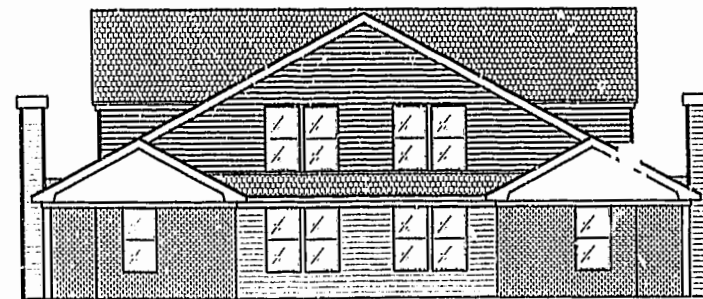
FIRST FLOOR PLAN  
(UNIT #1403 IS TYPICAL)



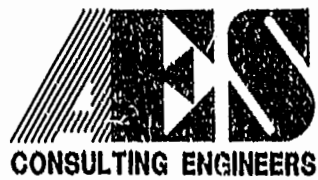
SECOND FLOOR PLAN  
(UNIT #1403 IS TYPICAL)



ELEVATION A



ELEVATION B



5248 Olde Towne Road, Suite 1  
Williamsburg, Virginia 23188  
(757) 253-0040  
Fax (757) 220-8994

PLAT OF CONDOMINIUM  
WESTGATE AT WILLIAMSBURG,  
A CONDOMINIUM  
PHASE FOURTEEN  
OWNED BY: 752 L.L.C.,  
A VIRGINIA LIMITED LIABILITY COMPANY  
CITY OF WILLIAMSBURG VIRGINIA



Williamsburg/James City County			
recorded	15 day of May 2001		
DOCUMENT	010183 11:31am		
BETSY N. WOOLLIDGE, CLERK OF CIRCUIT COURT			
No.	DATE	REVISION / COMMENT / NOTE	BY

Designed	Drawn
GTW/ADS	JFS
Scale	Date
1" = 10'	4/24/01
Project No.	
8395-6	
Drawing No.	
5 OF 6	

04.23.01-10.35 8395P145.DWG JFS