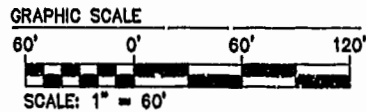


NOTE:
AT THE TIME OF THIS SURVEY
ROADS AND SIDEWALK ARE UNDER
CONSTRUCTION. (PROPOSED
LOCATION SHOWN). WATER &
& SANITARY SYSTEM ARE IN PLACE.



N OR F
WARBURTON & MAHONE ESTATE
TAX PARCEL 282-A-001

VARIABLE WIDTH CITY OF WILLIAMSBURG
SAN. SEWER & UTILITY
EASEMENT (DB 75/507 &
DB 80/481)



N/F
JAMESTOWN ACADEMY
TAX PARCEL 281-D3-A

NOTE:
THE AREAS OF PARCEL ONE AND PHASE ONE NOW
REFLECT THE PROPOSED SUBDIVISION OF PARCEL
ONE AS SHOWN BY A PLAT BY AES CONSULTING
ENGINEERS ENTITLED "PLAT OF SUBDIVISION
SHOWING PARCEL 1A CONTAINING 0.978 ACRES±
OWNED BY 752 L.L.C." DATED 11/22/2000.

AREA

TOTAL AREA PARCEL 1= 10.935 AC±

- PHASE FOURTEEN= 0.419 AC.±
- PHASE THIRTEEN= 1.098 AC.±
- PHASE TWELVE= 0.227 AC.±
- PHASE ELEVEN= 0.195 AC.±
- PHASE TEN= 0.222 AC.±
- PHASE NINE= 0.196 AC.±
- PHASE EIGHT= 1.459 AC.±
- PHASE SEVEN= 0.216 AC.±
- PHASE SIX= 0.343 AC.±
- PHASE FIVE= 0.235 AC.±
- PHASE FOUR= 0.200 AC.±
- PHASE THREE= 0.196 AC.±
- PHASE TWO= 0.195 AC.±
- PHASE ONE= 2.377 AC.±

ADDITIONAL AREA (PARCEL "B")= 2.068 AC.±
ADDITIONAL AREA (PARCEL "C")= 0.396 AC.±
ADDITIONAL AREA (PARCEL "D")= 0.893 AC.±

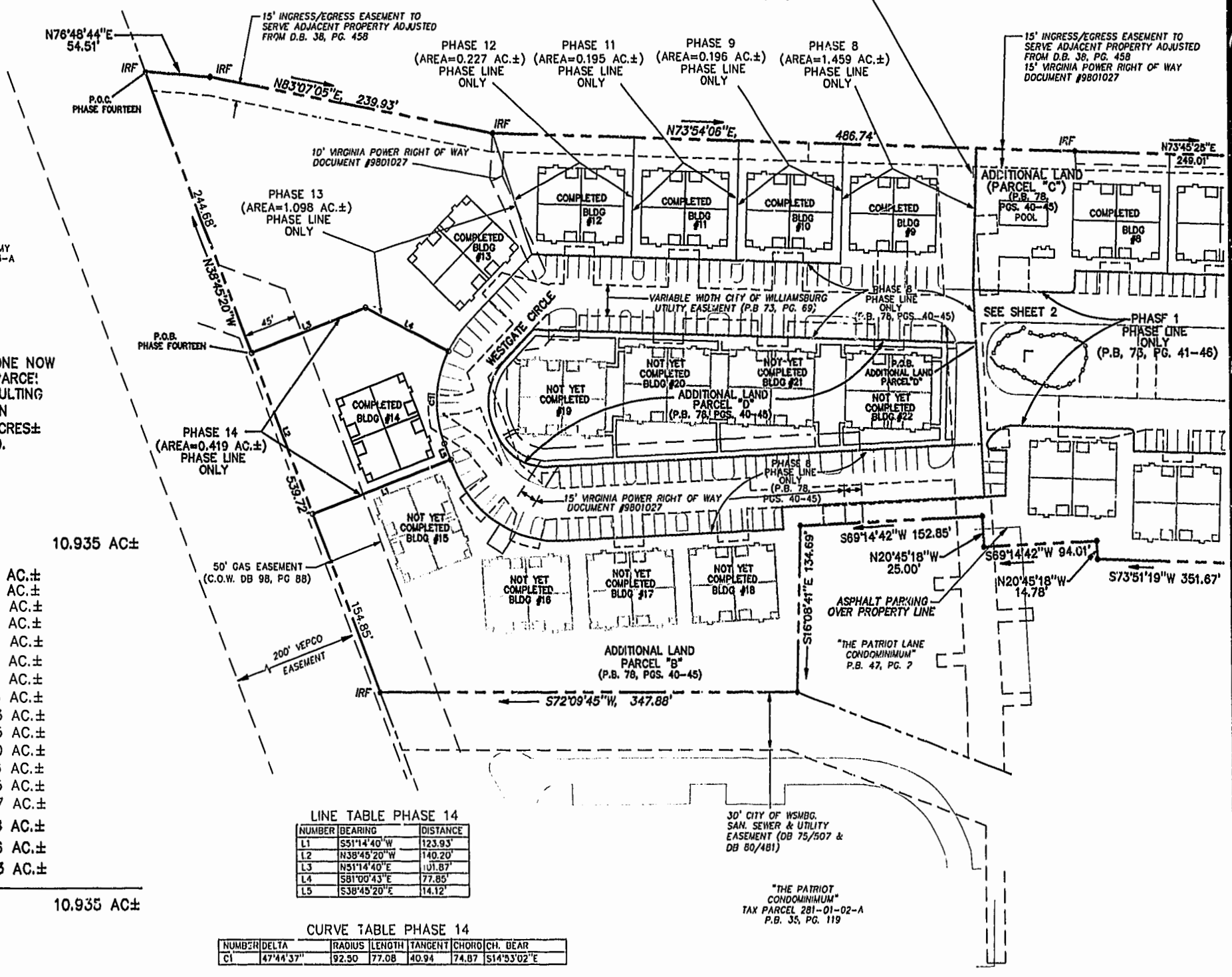
TOTAL= 10.935 AC±

LINE TABLE PHASE 14

NUMBER	BEARING	DISTANCE
L1	S51°14'40"W	123.93'
L2	N38°45'20"W	140.20'
L3	N51°14'40"E	101.87'
L4	S81°00'43"E	77.85'
L5	S38°45'20"E	14.12'

CURVE TABLE PHASE 14

NUMBER	DELTA	RADIUS	LENGTH	TANGENT	CHORD	CH. BEAR
C1	47°44'37"	92.30	77.08	40.94	74.87	S14°53'02"E

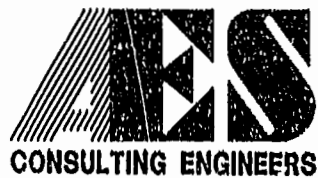


30' CITY OF WSMBG.
SAN. SEWER & UTILITY
EASEMENT (DB 75/507 &
DB 80/481)

"THE PATRIOT LANE
CONDOMINIUM"
P.B. 35, PG. 119

04.23.01-10.1R 8395P1.dwg

JFS



5248 Olde Towne Road, Suite 1
Williamsburg, Virginia 23188
(757) 253-0040
Fax (757) 220-8994

**PLAT OF CONDOMINIUM
WESTGATE AT WILLIAMSBURG,
A CONDOMINIUM
PHASE FOURTEEN**
OWNED BY: 752 L.L.C.,
A VIRGINIA LIMITED LIABILITY COMPANY
CITY OF WILLIAMSBURG VIRGINIA



Williamsburg/James City County	
Recorded 15 day 02/14/2001	NOT RECORDED IN
DOCUMENT # 020683 11:31 AM	FILE NO. 81-100-50-53
RETSY S. WOOLIDGE, CLERK OF CIRCUIT COURT	
No. DATE	REVISION / COMMENT / NOTE
	BY

Designed GTW/ADS	Drawn JFS
Scale 1" = 60'	Date 4/24/01
Proj. No. 8395-6	
Drawing No. 3 OF 6	