

PLAT OF SUBDIVISION  
OF PARCELS 9, 10, 14, & 60  
AND RE-SUBDIVISION OF BASIN B  
BEING A PORTION OF PARCEL C  
BUSCH CORPORATE CENTER - WILLIAMSBURG

ROBERTS DISTRICT JAMES CITY COUNTY, VIRGINIA  
BRUTON DISTRICT YORK COUNTY, VIRGINIA

DATE: 9/22/00 SCALE: 1" = 100'

SHEET 3 OF 3

S.R. 199 R/W VARIES

50-2-(1)-8  
PARCEL 8  
P.B. 46 PG. 73

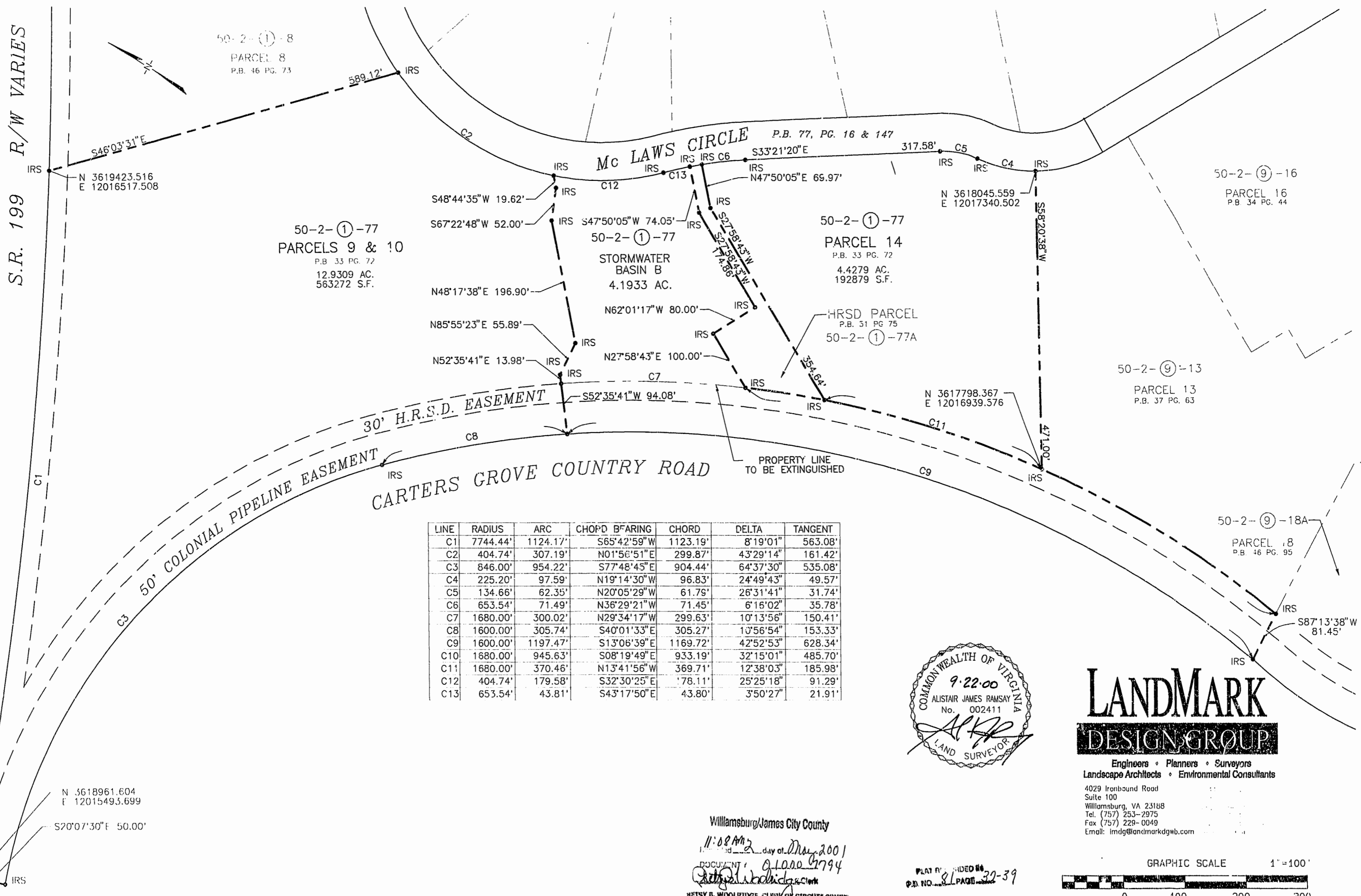
50-2-(1)-77  
PARCELS 9 & 10  
P.B. 33 PG. 72  
12.9309 AC.  
563272 S.F.

50-2-(1)-77  
PARCEL 14  
P.B. 33 PG. 72  
4.4279 AC.  
192879 S.F.

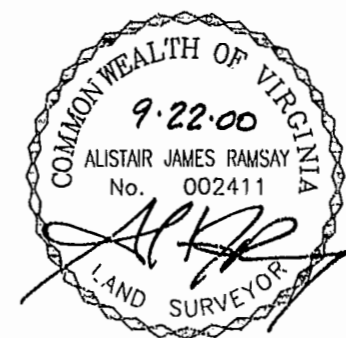
50-2-(9)-16  
PARCEL 16  
P.B. 34 PG. 44

50-2-(9)-13  
PARCEL 13  
P.B. 37 PG. 63

50-2-(9)-18A  
PARCEL 18  
P.B. 46 PG. 95

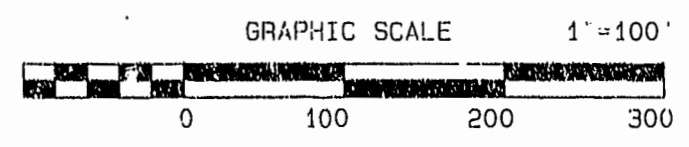


LINE	RADIUS	ARC	CHORD BEARING	CHORD	DELTA	TANGENT
C1	7744.44'	1124.17'	S65°42'59"W	1123.19'	8°19'01"	563.08'
C2	404.74'	307.19'	N01°56'51"E	299.87'	4°3'29'14"	161.42'
C3	846.00'	954.22'	S77°48'45"E	904.44'	64°37'30"	535.08'
C4	225.20'	97.59'	N19°14'30"W	96.83'	24°49'43"	49.57'
C5	134.66'	62.35'	N20°05'29"W	61.79'	26°31'41"	31.74'
C6	653.54'	71.49'	N36°29'21"W	71.45'	6°16'02"	35.78'
C7	1680.00'	300.02'	N29°34'17"W	299.63'	10°13'56"	150.41'
C8	1600.00'	305.74'	S40°01'33"E	305.27'	1°56'54"	153.33'
C9	1600.00'	1197.47'	S13°06'39"E	1169.72'	42°52'53"	628.34'
C10	1680.00'	945.63'	S08°19'49"E	933.19'	32°15'01"	485.70'
C11	1680.00'	370.46'	N13°41'56"W	369.71'	12°38'03"	185.98'
C12	404.74'	179.58'	S32°30'25"E	178.11'	25°25'18"	91.29'
C13	653.54'	43.81'	S43°17'50"E	43.80'	3°50'27"	21.91'



**LANDMARK DESIGN GROUP**  
Engineers • Planners • Surveyors  
Landscape Architects • Environmental Consultants

4029 Ironbound Road  
Suite 100  
Williamsburg, VA 23188  
Tel. (757) 253-2975  
Fax (757) 229-0049  
Email: lmdg@landmarkdgb.com



Williamsburg/James City County  
11:08 AM  
day of May 2001  
DOCUMENT # 010002794  
Betsy B. Woolridge, Clerk of Circuit Court

PLAT RECORDED # 81-39  
P.B. NO. 34 PG. 44

N 3618961.604  
E 12015493.699  
S20°07'30"E 50.00'