

46-1-01-0-0001
"GREENSPRINGS PLANTATION"
(DB 322, PG 254)

EXIST. 20' JAMES CITY COUNTY SERVICE
AUTHORITY SAN. SEWER EASEMENT AS
SHOWN IN AS-BUILT LOCATION. D.B. 141 - PG. 388

EXIST. 20' DRAINAGE EASMT.
M.B. 65 - PG. 2

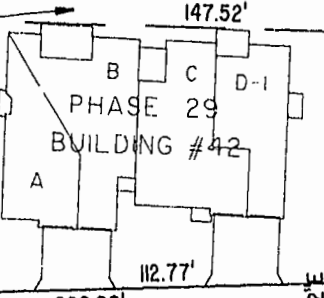
EXIST. 20' DRAINAGE EASEMENT
M.B. 65 - PG. 2

N 76°40'21" E
20' SANITARY SEWER EASEMENT

COMMON
AREA

EX. 50' COLONIAL PIPELINE EASEMENT (D.B. 90 PG. 1)
COMMON
AREA

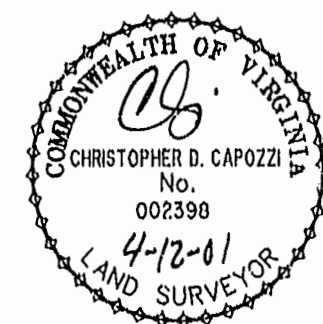
ADDITIONAL LAND



COMMON AREA
BMP LAKE #1
AREA = 38,052 SQ. FT. =
0.8735 AC.
SEE SHEET 3 FOR DETAIL

MATCH LINE
SEE SHEET 4

MATCH LINE
SEE SHEET 4



SEE SHEETS 4 FOR
LOCATION AND DETAILS
OF PHASE 22, BLDG. #43

EXHIBIT "A" PHASE 36
FAIRWAYS VILLAS
AT
GREENSPRINGS, A CONDOMINIUM
FOR
GREENSPRINGS DEVELOPMENT, L.C.
BERKELEY DISTRICT JAMES CITY COUNTY, VIRGINIA

Hassell & Folkes, P.C. Engineers Surveyors Planners Chesapeake, VA 23320 (757) 547-9531	SIZE C	CONTRACT NO 95-079	DISK/BOX 6AA/16	FILENAME FAIRWAY36.DWG	REV. 1
SCALE: 1" = 50'	DATE: 04/09/01	SHEET 5 of 6			

PLAT 1
P.D. NO. 411
Williamsburg/James City County
3:32 PM
Recorded 23 day of April 2001
DOCUMENT # 010007175
Betsy B. Woolridge, Clerk of Circuit Court