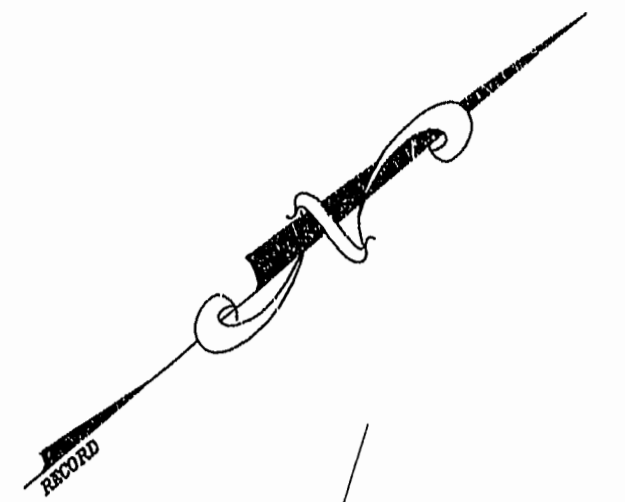
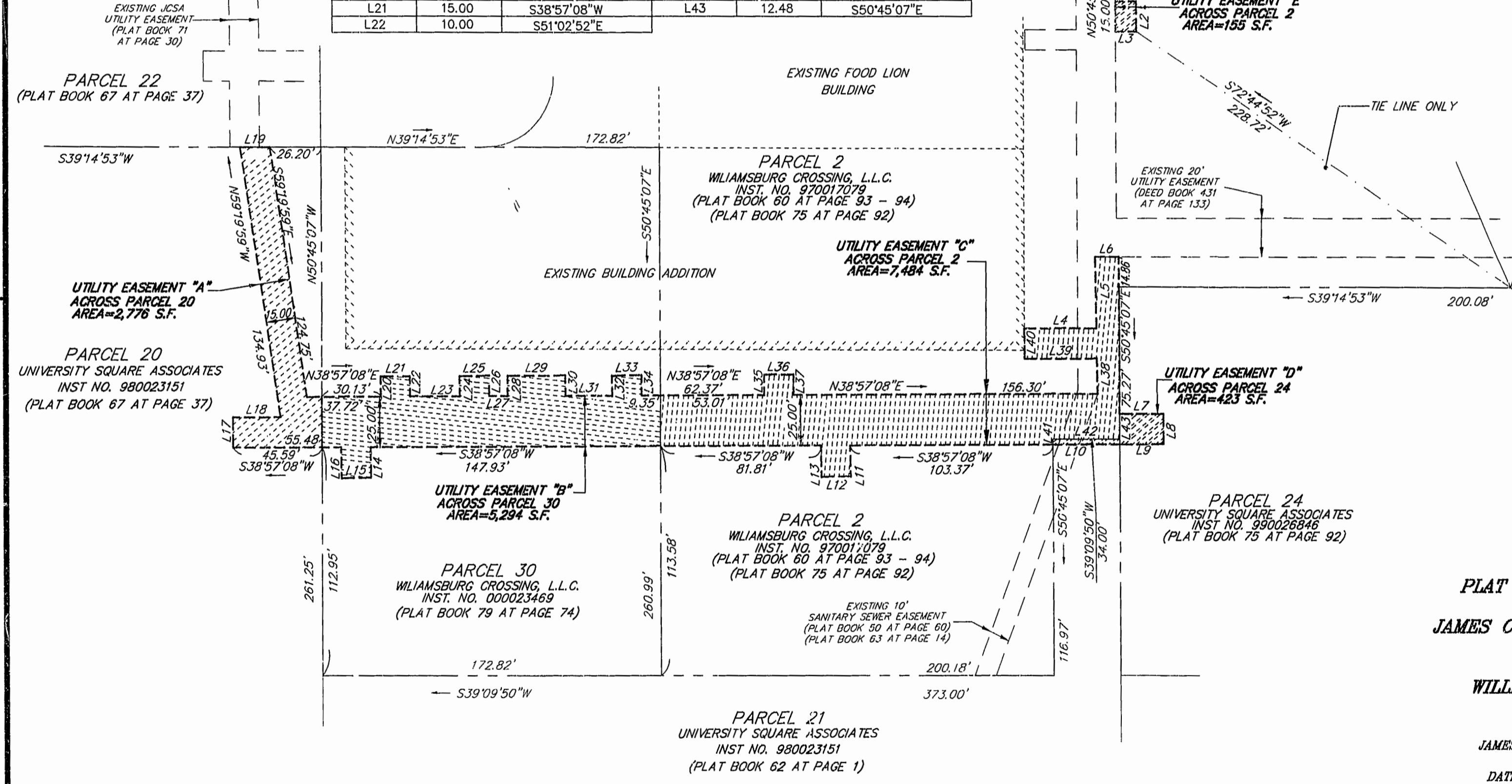


VICINITY MAP
SCALE 1" = 2000'

LINE TABLE					
LINE	LENGTH	BEARING			
L1	10.34	S39°14'50"W	L23	25.32	S38°57'08"W
L2	15.00	N50°45'10"W	L24	10.00	S51°02'52"E
L3	10.34	S39°14'50"W	L25	15.00	S38°57'08"W
L4	36.76	S38°56'57"W	L26	5.00	S51°02'52"E
L5	35.32	S51°31'17"E	L27	9.43	S38°57'08"W
L6	12.03	N39°12'25"E	L28	10.00	S51°02'52"E
L7	22.31	N38°57'08"E	L29	29.56	S38°57'08"W
L8	15.00	S51°02'52"E	L30	10.00	S51°02'52"E
L9	22.39	S38°57'08"W	L31	24.00	S38°57'08"W
L10	34.00	S38°57'08"W	L32	10.00	S51°02'52"E
L11	15.40	S51°39'28"E	L33	15.00	S38°57'08"W
L12	15.00	N38°20'32"E	L34	10.00	S51°02'52"E
L13	15.55	S51°39'28"E	L35	10.00	S51°02'52"E
L14	15.14	S51°35'08"E	L36	15.00	S38°57'08"W
L15	15.00	N38°24'52"E	L37	10.00	S51°02'52"E
L16	15.28	S51°35'08"E	L38	17.54	S51°31'30"E
L17	15.00	S51°02'52"E	L39	36.89	S38°56'57"W
L18	24.43	S38°57'08"W	L40	15.00	S51°03'03"E
L19	15.17	N39°14'53"E	L41	2.55	S50°45'07"E
L20	10.00	S51°02'52"E	L42	34.00	N39°09'50"E
L21	15.00	S38°57'08"W	L43	12.48	S50°45'07"E
L22	10.00	S51°02'52"E			



PLAT SHOWING EASEMENTS
TO BE CONVEYED TO
JAMES CITY SERVICE AUTHORITY
ACROSS PARCELS
2, 30, AND 24
WILLIAMSBURG CROSSING

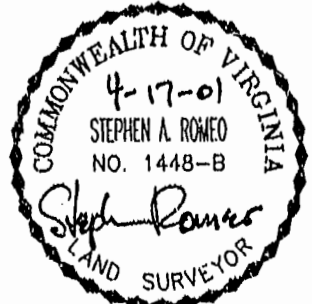
JAMESTOWN DISTRICT
JAMES CITY COUNTY, VIRGINIA

DATE: 04/16/01 SCALE: 1"=40'

NOTE: PROPOSED EASEMENT LOCATIONS ARE BASED ON A FIELD SURVEY OF SURFACE FEATURES PERFORMED BY LANDMARK DESIGN GROUP AND SUBSURFACE DIMENSIONS SUPPLIED BY THE CONTRACTOR

Williamsburg/James City County
3:19 PM
Recorded 23 day of April 2001
DOCUMENT # 010007174
Betsy D. Woolridge, Clerk of Circuit Court

PLAT RECORDED IN
BOOK NO. 51 PAGE 27



LANDMARK DESIGN GROUP
Engineers • Planners • Surveyors
Landscape Architects • Environmental Consultants

4029 Ironbound Road
Suite 100
Williamsburg, VA 23188
Tel. (757) 253-2975
Fax (757) 229-0049
Email: lmdg@landmarkdgv.com

5544 Greenwich Road
Suite 200
Virginia Beach, VA 23462
Tel. (757) 473-2000
Fax (757) 497-7933
Email: lmdg@landmarkdgv.com

Approved: *William Davis*

DRAWN BY: PF
CHKD. BY: SAR
PROJ. NO.: 1880079-000.43
DWG. NO.: 11800W