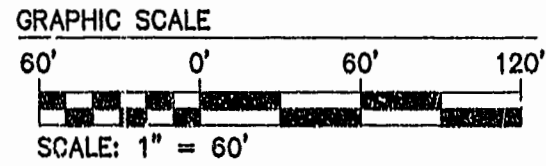
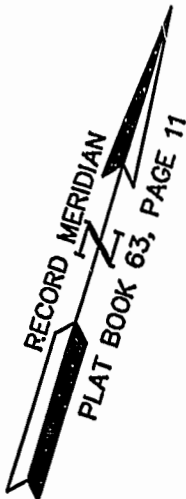


NOTE:  
AT THE TIME OF THIS SURVEY  
ROADS AND SIDEWALK ARE UNDER  
CONSTRUCTION. (PROPOSED  
LOCATION SHOWN). WATER &  
& SANITARY SYSTEM ARE IN PLACE.



N OR F  
WARBURTON & MAHONE ESTATE  
TAX PARCEL 282-A-001

VARIABLE WIDTH CITY OF WILLIAMSBURG  
SAN. SEWER & UTILITY  
EASEMENT (DB 75/507 &  
DB 80/481)



N/F  
JAMESTOWN ACADEMY  
TAX PARCEL 281-03-A

NOTE:  
THE AREAS OF PARCEL ONE AND PHASE ONE NOW  
REFLECT THE PROPOSED SUBDIVISION OF PARCEL  
ONE AS SHOWN BY A PLAT BY AES CONSULTING  
ENGINEERS ENTITLED "PLAT OF SUBDIVISION  
SHOWING PARCEL 1A CONTAINING 0.978 ACRES±  
OWNED BY 752 L.L.C." DATED 11/22/2000.

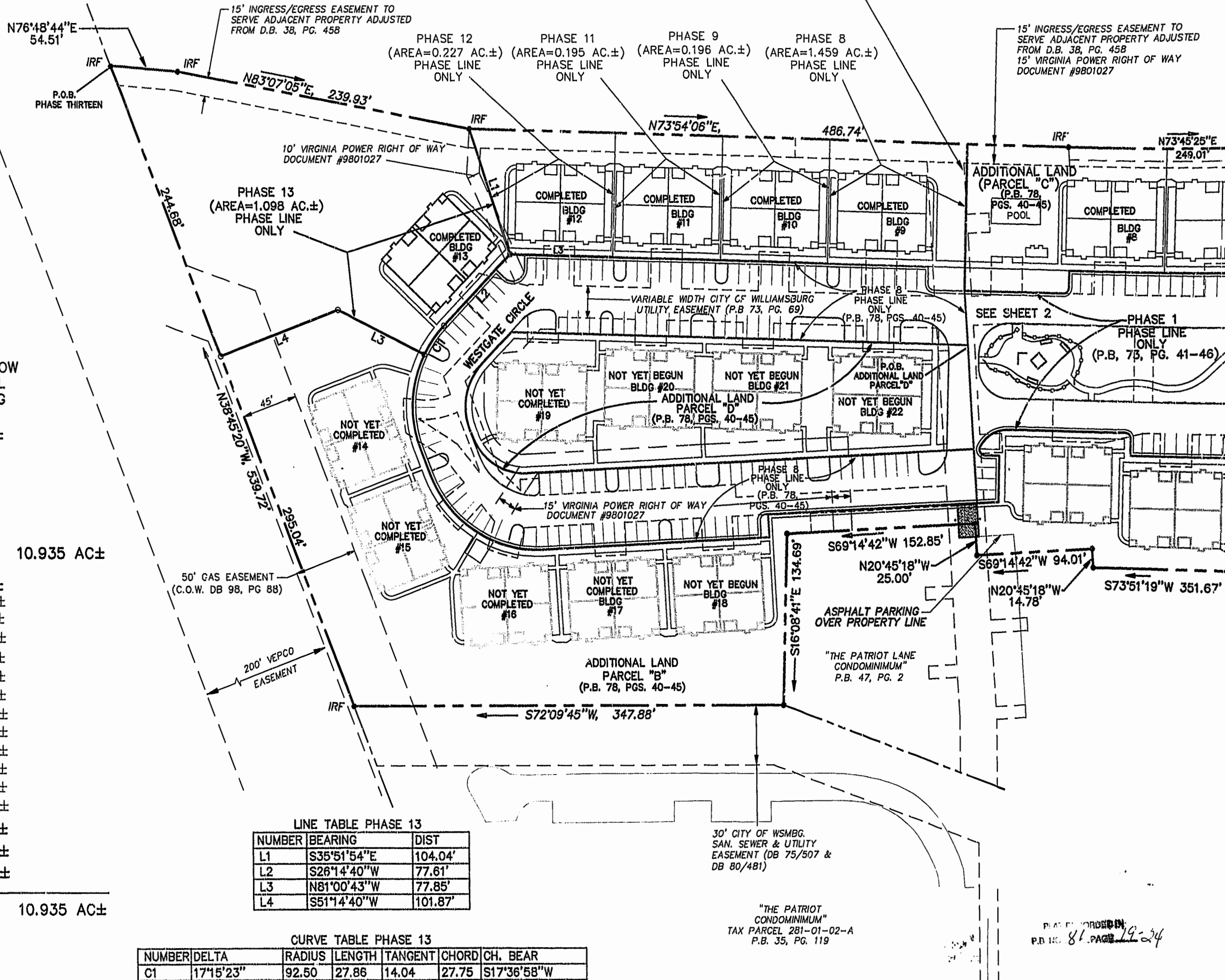
AREA	
TOTAL AREA PARCEL 1=	10.935 AC±
PHASE THIRTEEN=	1.098 AC.±
PHASE TWELVE=	0.227 AC.±
PHASE ELEVEN=	0.195 AC.±
PHASE TEN=	0.222 AC.±
PHASE NINE=	0.196 AC.±
PHASE EIGHT=	1.459 AC.±
PHASE SEVEN=	0.216 AC.±
PHASE SIX=	0.343 AC.±
PHASE FIVE=	0.235 AC.±
PHASE FOUR=	0.200 AC.±
PHASE THREE=	0.196 AC.±
PHASE TWO=	0.195 AC.±
PHASE ONE=	2.377 AC.±
ADDITIONAL AREA (PARCEL "B")=	2.487 AC.±
ADDITIONAL AREA (PARCEL "C")=	0.396 AC.±
ADDITIONAL AREA (PARCEL "D")=	0.893 AC.±
<b>TOTAL=</b>	<b>10.935 AC±</b>

LINE TABLE PHASE 13

NUMBER	BEARING	DIST
L1	S35°51'54"E	104.04'
L2	S26°14'40"W	77.61'
L3	N81°00'43"W	77.85'
L4	S51°14'40"W	101.87'

CURVE TABLE PHASE 13

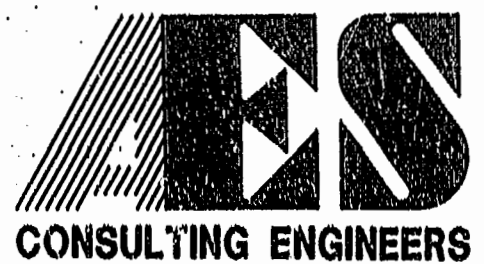
NUMBER	DELTA	RADIUS	LENGTH	TANGENT	CHORD	CH. BEAR
C1	17°15'23"	92.50	27.86	14.04	27.75	S17°36'58"W



30' CITY OF WSMBG.  
SAN. SEWER & UTILITY  
EASEMENT (DB 75/507 &  
DB 80/481)

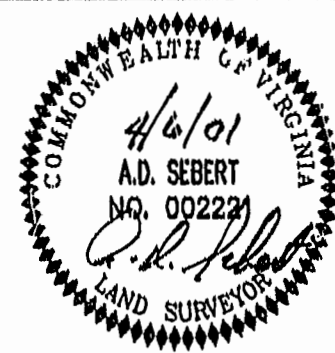
"THE PATRIOT LANE  
CONDOMINIUM"  
TAX PARCEL 281-01-02-A  
P.B. 35, PG. 119

PLAT RECORDED IN  
P.B. NO. 81, PAGE 19-24



5248 Olde Towne Road, Suite 1  
Williamsburg, Virginia 23188  
(757) 253-0040  
Fax (757) 220-8994

PLAT OF CONDOMINIUM  
WESTGATE AT WILLIAMSBURG,  
A CONDOMINIUM  
PHASE THIRTEEN  
OWNED BY: 752 L.L.C.,  
A VIRGINIA LIMITED LIABILITY COMPANY  
CITY OF WILLIAMSBURG VIRGINIA



No.	DATE	REVISION / COMMENT / NOTE	BY

Designed GTW/ADS	Drawn JFS
Scale 1" = 60'	Date 4/6/01
Project No. 8395-6	
Drawing No. 3 OF 6	

04-12-01-09:30 8395P133.DWG JFS