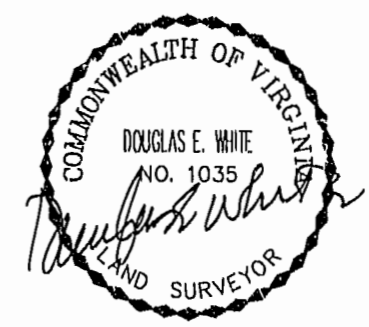
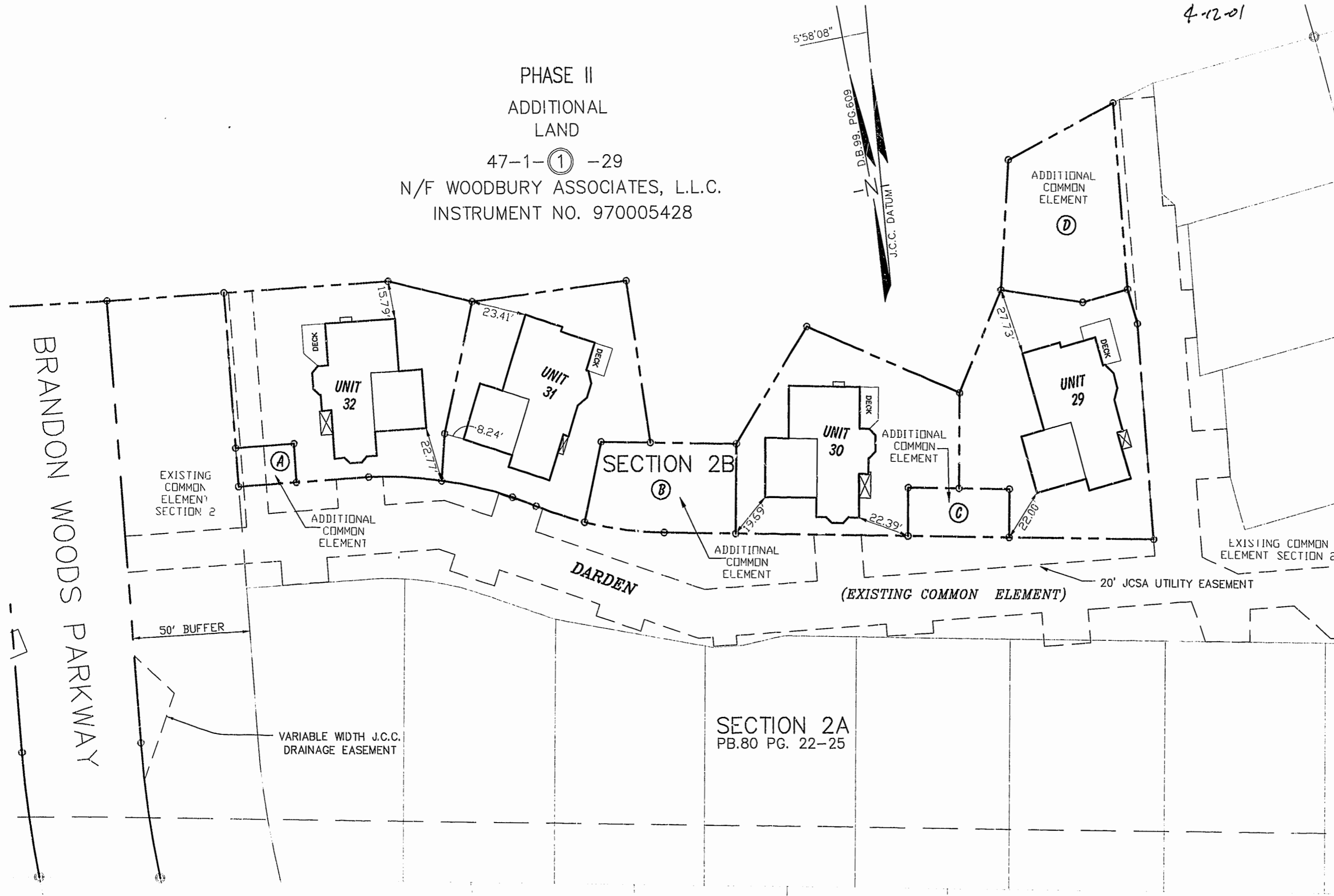


CONDOMINIUM PLAT
OF
SECTION 2B
(A PORTION OF SECTION 2, PHASE II)
BRANDON WOODS
JAMES CITY COUNTY, VIRGINIA
SCALE: 1"=30' DATE: 4/10/01
SHEET 3 OF 4

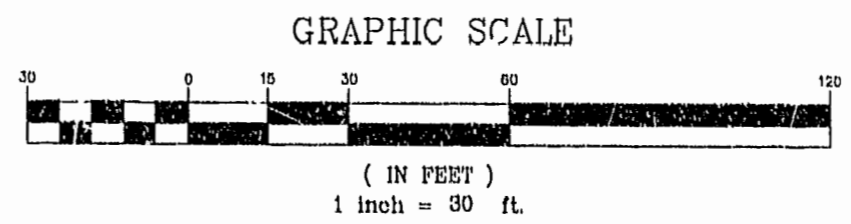


PHASE II
ADDITIONAL
LAND
47-1-(1) -29
N/F WOODBURY ASSOCIATES, L.L.C.
INSTRUMENT NO. 970005428



SECTION 2A
PB.80 PG. 22-25

Williamsburg/James City County
10:58 AM
18 day of April 2001
010006800
HETSY B. WOOLRIDGE, CLERK OF CIRCUIT COURT



LANDMARK
DESIGN GROUP

Engineers Planners Surveyors
Landscape Architects Environmental Consultants
4029 IRONBOUND ROAD, SUITE 100
WILLIAMSBURG, VA 23188
TEL (757)253-2975 FAX (757)229-0049