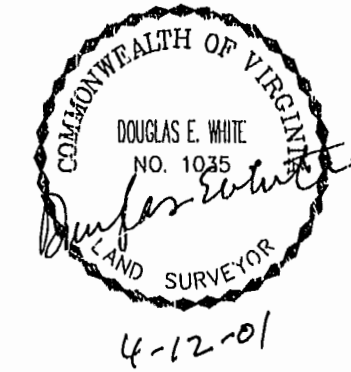


CONDOMINIUM PLAT
OF
SECTION 2B
(A PORTION OF SECTION 2, PHASE II)
BRANDON WOODS
JAMES CITY COUNTY, VIRGINIA
SCALE: 1"=30' DATE: 4/10/01

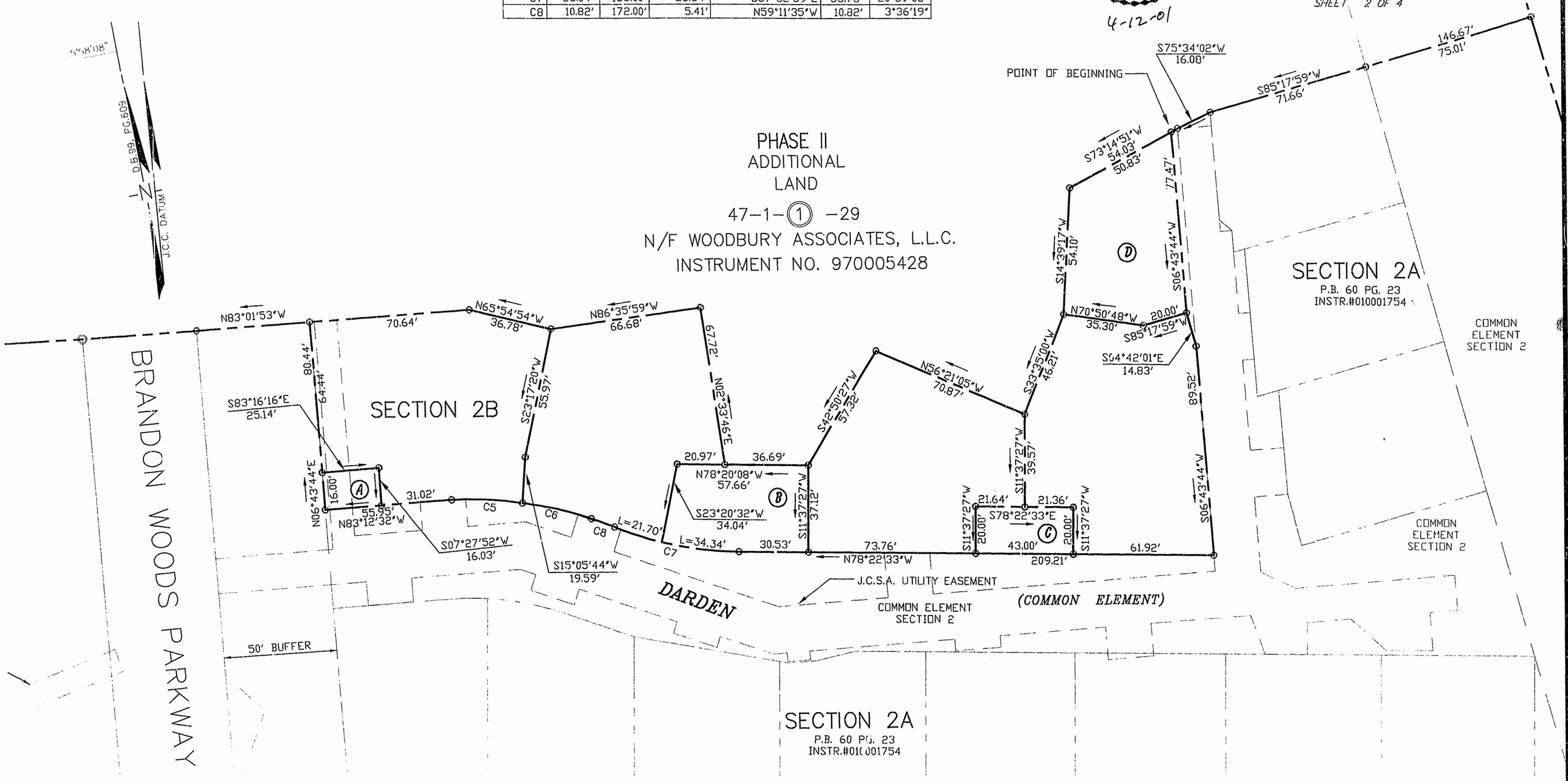


SHEET 2 OF 4

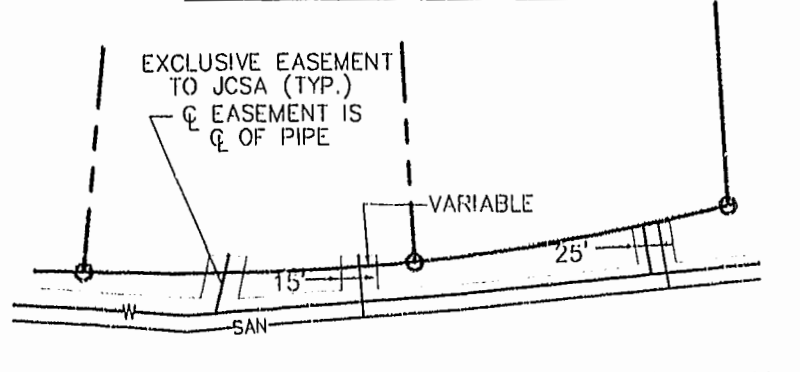
CURVE TABLE						
CURVE	LENGTH	RADIUS	TANGENT	CHORD DIRECTION	CHORD	DELTA
C5	31.26'	155.94'	15.68'	N76°16'25"W	31.21'	11°29'13"
C6	31.08'	155.72'	15.59'	N66°25'37"W	31.03'	11°26'14"
C7	56.04'	153.00'	28.34'	S67°52'59"E	55.73'	20°59'08"
C8	10.82'	172.00'	5.41'	N59°11'35"W	10.82'	3°36'19"

PHASE II
ADDITIONAL
LAND

47-1-①-29
N/F WOODBURY ASSOCIATES, L.L.C.
INSTRUMENT NO. 970005428



JCSA EASEMENT DETAIL



NOTE: JCSA UTILITY EASEMENT SHOWN ON THIS PLAT IS GRAPHIC ONLY. LOCATION OF EASEMENT SHALL BE BASED ON ACTUAL FIELD LOCATION OF PIPES.

Williamsburg/James City County
10:58 AM
Recorded April 2001
DOCUMENT # 010006800
HETSY B. WOOLRIDGE, CLERK OF CIRCUIT COURT

PLAT RECORDING
P.D. NO. 81 PAGE 2-15



Engineers • Planners • Surveyors
Landscape Architects • Environmental Consultants
4029 IRONBOUND ROAD, SUITE 100
WILLIAMSBURG, VA 23188
TEL (757)253-2975 FAX (757)229-0049