

VICINITY MAP (NTS)

CURVE DATA:

NUMBER	C1
DELTA	14°46'28"
RADIUS	264.31'
LENGTH	68.16'
TANGENT	34.27'
CHORD BEARING	N 11°08'00" E
CHORD	67.97'

LEGEND:

- EX. EXISTING
- ⊠ ELECTRIC TRANSFORMER
- ⊗ WATER VALVE
- ⊕ FIRE HYDRANT
- ⊞ WATER METER
- SANITARY MANHOLE
- SANITARY CLEAN OUT
- TELEPHONE PED
- ⊙ LIGHT POLE
- ⊙ SIGN
- D.I. - CURB DROP INLET - STORM SEWER
- D.I. - DROP INLET GRATE - STORM SEWER
- ⊙ STORM SEWER MANHOLE
- ⊙ TELEPHONE MANHOLE
- ⊞ GAS METER
- ⊞ GAS VALVE
- EP EDGE OF PAVEMENT
- CONC. CONCRETE
- CONC. CONCRETE
- DB DEED BOOK
- PB PLAT BOOK
- S.F. SQUARE FEET
- AC. ACRES
- IRF IRON REBAR FOUND
- R/W RIGHT-OF-WAY

FRANCIS ST.
(56' R/W)

N 75°06'59" W EX. 1" IRON PIPE
1.85'

N 86°44'02" E
5.36.18'

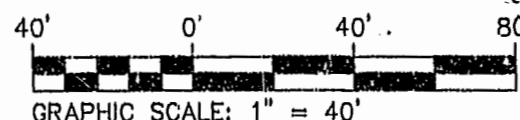
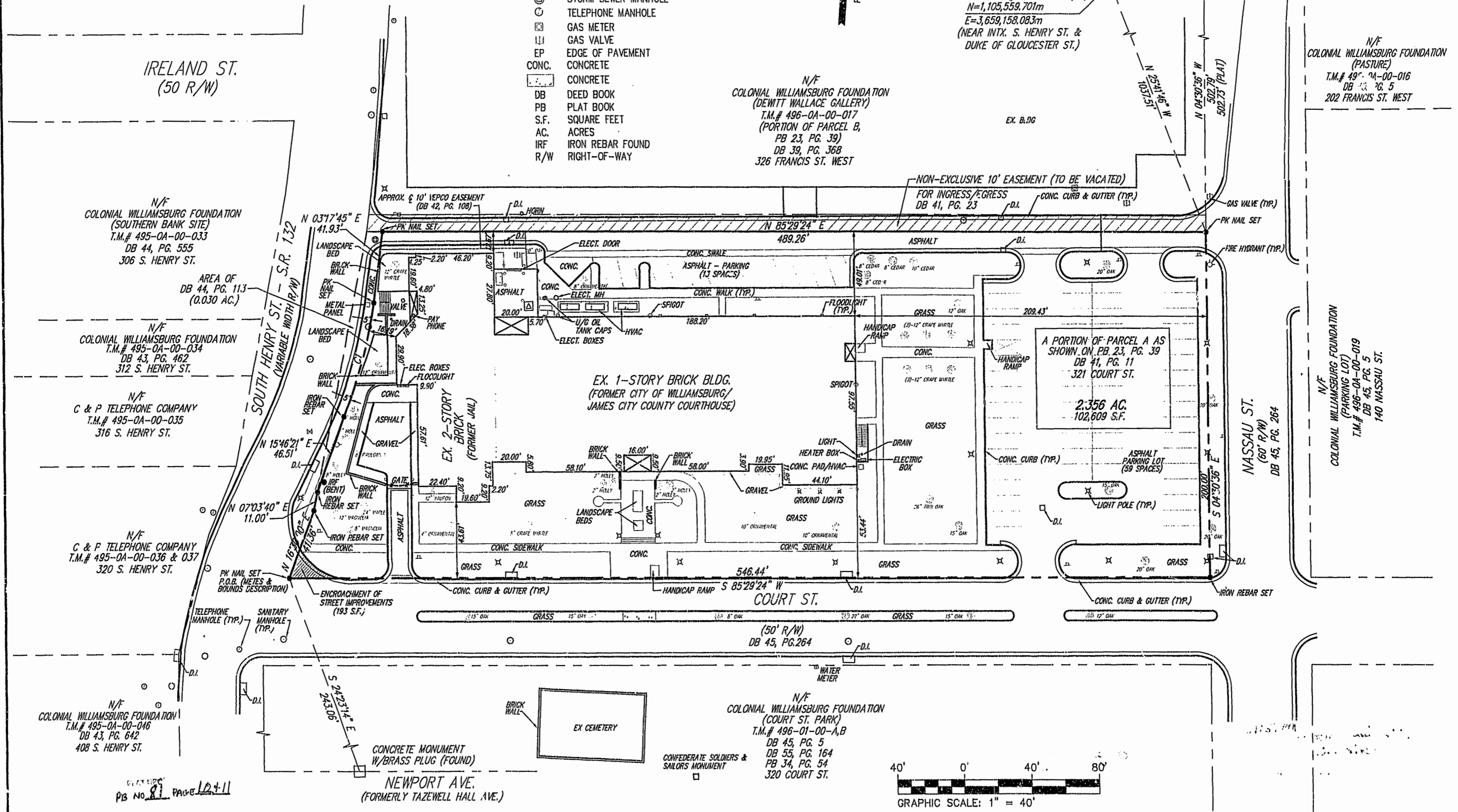
U.S.D.I. - N.P.S.
CONCRETE MONUMENT
W/BRASS CAP
(FOUND)

N/F
COLONIAL WILLIAMSBURG FOUNDATION
(DEWITT WALLACE GALLERY)
T.M.# 496-0A-00-017
(PORTION OF PARCEL B,
PB 23, PG. 39)
DB 39, PG. 368
326 FRANCIS ST. WEST

CITY OF WILLIAMSBURG CONTROL
MONUMENT #13, NAD '83 (93)
N=1,105,559.701m
E=3,659,158.083m
(NEAR INTX. S. HENRY ST. &
DUKE OF GLOUCESTER ST.)

N/F
COLONIAL WILLIAMSBURG FOUNDATION
(PASTURE)
T.M.# 496-0A-00-016
DB 39, PG. 5
202 FRANCIS ST. WEST

N/F
COLONIAL WILLIAMSBURG FOUNDATION
(PARKING LOT)
T.M.# 496-0A-00-019
DB 45, PG. 5
140 NASSAU ST.

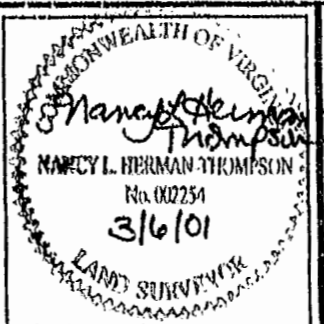


1 OF 2	SHEET NUMBER 6392	SCALE 1"=40'
		FIELD SS/RR
		DRAWN DNW
		CHECKED NLHT
		DATE 2/22/01

ALTA/ACSM LAND TITLE SURVEY
A PORTION OF PARCEL A - 2.386 ACRES
321 COURT STREET
FOR
THE COLONIAL WILLIAMSBURG FOUNDATION
CITY OF WILLIAMSBURG VIRGINIA

THIS DOCUMENT IS THE SOLE PROPERTY OF DJG, INC. OF WILLIAMSBURG, VIRGINIA. THE REPRODUCTION, IN WHOLE OR PART, OR THE MODIFICATION OF ANY DETAIL OR DESIGN IS NOT TO BE MADE WITHOUT THE EXPRESS WRITTEN CONSENT OF DJG, INC., COPYRIGHT 2001.

NO.	DATE	DESCRIPTION
1	3-6-01	BLDG. OFFSETS, EASEMENT NOTE



Committed to Excellence
ENGINEERS • ARCHITECTS • SURVEYORS
449 McLAWS CIRCLE, P.O. BOX 3505 WILLIAMSBURG, VIRGINIA 23187
(757) 253-0873 • NORFOLK-VIRGINIA BEACH AREA (757) 874-5015
FAX: (757) 253-2319 E-MAIL: williamsburg@djginc.com