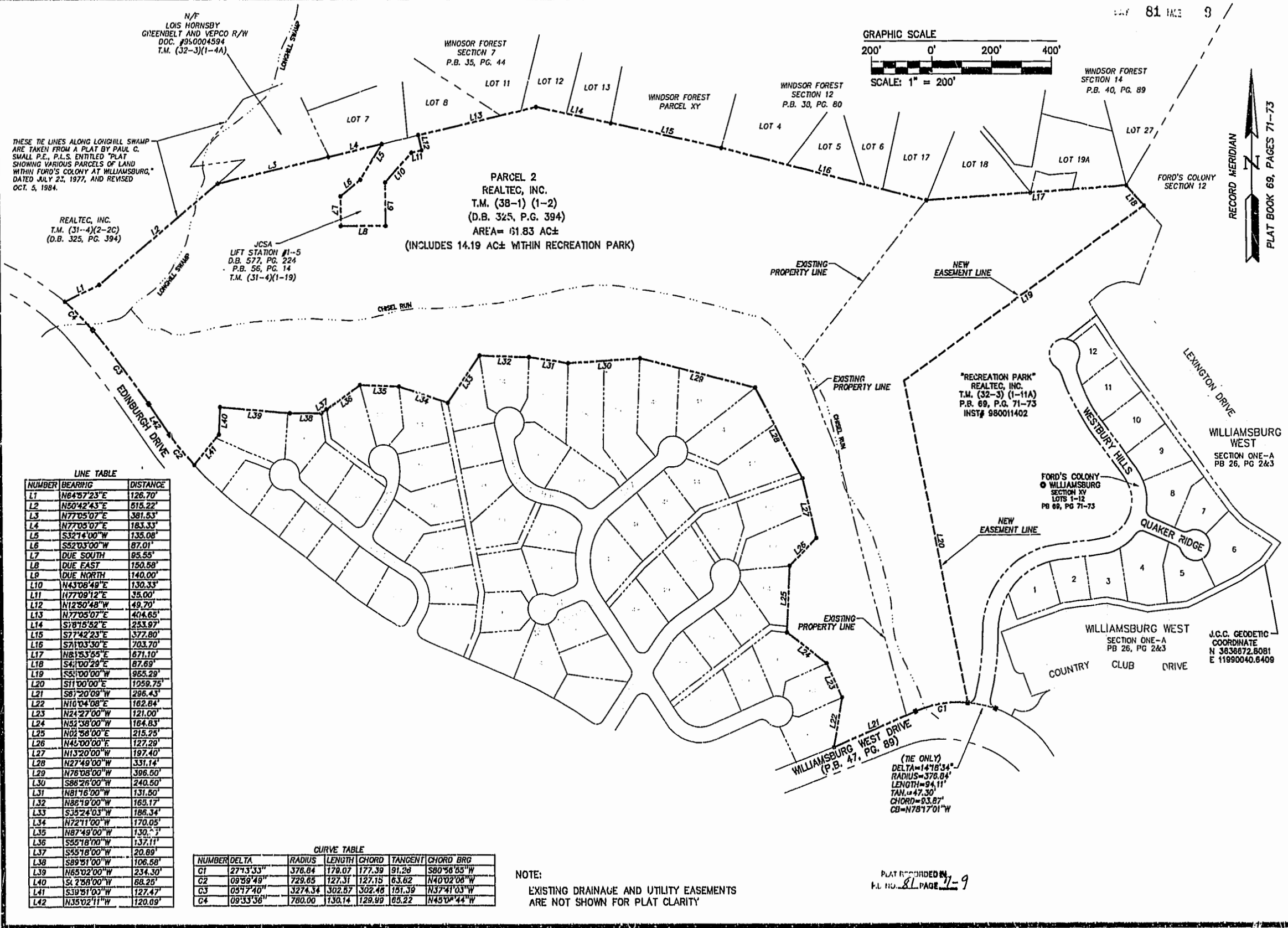


PLAT BOOK 69, PAGES 71-73



THESE TIE LINES ALONG LONGHILL SWAMP ARE TAKEN FROM A PLAT BY PAUL C. SMALL P.E., P.L.S. ENTITLED "PLAT SHOWING VARIOUS PARCELS OF LAND WITHIN FORD'S COLONY AT WILLIAMSBURG," DATED JULY 22, 1977, AND REVISED OCT. 5, 1984.

REALTEC, INC.
T.M. (31-4)(2-2C)
(D.B. 325, PG. 394)

JCSA
LIFT STATION #1-5
D.B. 577, PG. 224
P.B. 56, PG. 14
T.M. (31-4)(1-19)

PARCEL 2
REALTEC, INC.
T.M. (38-1) (1-2)
(D.B. 325, P.G. 394)
AREA= 61.83 AC±
(INCLUDES 14.19 AC± WITHIN RECREATION PARK)

EXISTING PROPERTY LINE

NEW EASEMENT LINE

"RECREATION PARK"
REALTEC, INC.
T.M. (32-3) (1-11A)
P.B. 69, P.G. 71-73
INST# 980011402

WILLIAMSBURG WEST
SECTION ONE-A
PB 26, PG 2&3

FORD'S COLONY
WILLIAMSBURG
SECTION XV
LOTS 1-12
PB 69, PG 71-73

WILLIAMSBURG WEST
SECTION ONE-A
PB 26, PG 2&3

J.C.C. GEODETIC
COORDINATE
N 363672.8081
E 11890040.6409

(THE ONLY)
DELTA=14°18'34"
RADIUS=376.04'
LENGTH=94.11'
TAN.=47.30'
CHORD=93.87'
CB=N78°17'01"W

PLAT RECORDED IN
P.L. NO. 81 PAGE 7-9

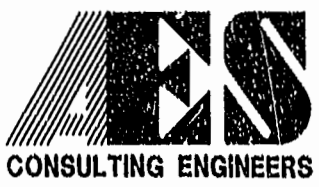
NOTE:
EXISTING DRAINAGE AND UTILITY EASEMENTS
ARE NOT SHOWN FOR PLAT CLARITY

LINE TABLE

NUMBER	BEARING	DISTANCE
L1	N64°57'23"E	126.70'
L2	N50°42'43"E	515.22'
L3	N77°05'07"E	381.53'
L4	N77°05'07"E	183.33'
L5	S32°14'00"W	135.08'
L6	S52°03'00"W	87.01'
L7	DUE SOUTH	95.55'
L8	DUE EAST	150.68'
L9	DUE NORTH	140.00'
L10	N43°08'48"E	130.33'
L11	N77°09'12"E	35.00'
L12	N12°50'48"W	49.70'
L13	N77°05'07"E	404.65'
L14	S1°15'52"E	253.97'
L15	S77°42'23"E	377.80'
L16	S71°03'30"E	703.70'
L17	N81°53'55"E	671.10'
L18	S41°00'29"E	87.69'
L19	S51°00'00"W	955.29'
L20	S11°00'00"E	1059.75'
L21	S81°20'09"W	296.43'
L22	N10°04'08"E	162.84'
L23	N24°27'00"W	121.00'
L24	N52°38'00"W	164.83'
L25	N02°58'00"E	215.25'
L26	N45°00'00"E	127.29'
L27	N13°20'00"W	197.40'
L28	N27°49'00"W	331.14'
L29	N76°08'00"W	396.60'
L30	S86°26'00"W	240.50'
L31	N81°16'00"W	131.50'
L32	N86°19'00"W	165.17'
L33	S35°24'03"W	186.34'
L34	N72°11'00"W	170.05'
L35	N87°49'00"W	130.73'
L36	S55°18'00"W	137.11'
L37	S55°18'00"W	20.89'
L38	S89°51'00"W	106.58'
L39	N65°02'00"W	234.30'
L40	S4°28'00"W	88.28'
L41	S59°51'00"W	127.47'
L42	N35°02'11"W	120.09'

CURVE TABLE

NUMBER	DELTA	RADIUS	LENGTH	CHORD	TANGENT	CHORD BRG
C1	27°13'33"	376.84	179.07	177.39	91.38	S80°58'55"W
C2	09°59'48"	729.85	127.31	127.15	63.82	N40°02'08"W
C3	05°17'40"	3274.34	302.67	302.46	151.39	N37°41'03"W
C4	09°33'36"	780.00	130.14	129.99	65.22	N45°04'44"W



2548 Olde Towne Road, Suite 1
Williamsburg, Virginia 23188
(757) 253-0040
Fax (757) 220-8994

PLAT SHOWING A PROPOSED
CONSERVATION AREA ON TWO PARCELS
OF LAND BEING A PART OF
FORD'S COLONY AT WILLIAMSBURG
POWhatan/Berkeley District JAMES CITY COUNTY VIRGINIA



No.	DATE	REVISION / COMMENT / NOTE	BY

Designed by: <i>JFS</i>	Drawn: <i>JFS/DLD</i>
AES: <i>11/16/00</i>	Date: <i>11/16/00</i>
Scale: <i>1"=200'</i>	Project No.: <i>5652-96</i>
	Drawing No.: <i>3 OF 3</i>