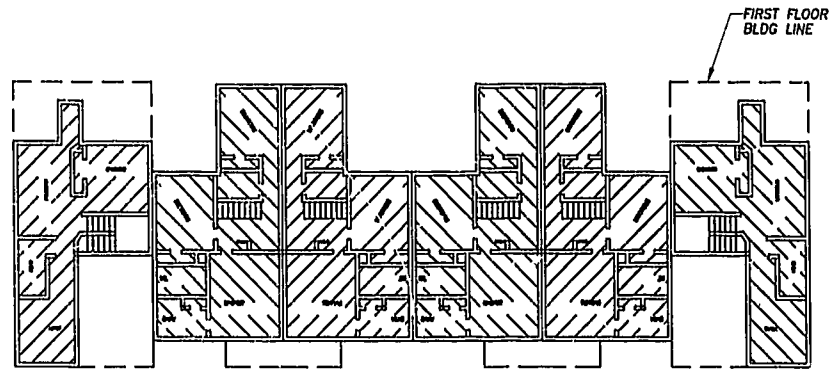
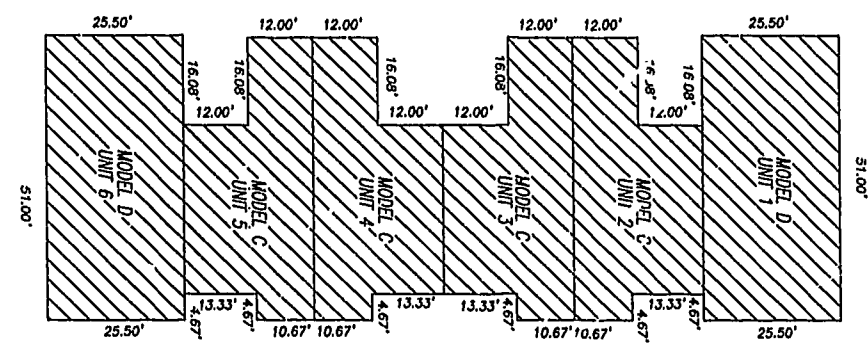


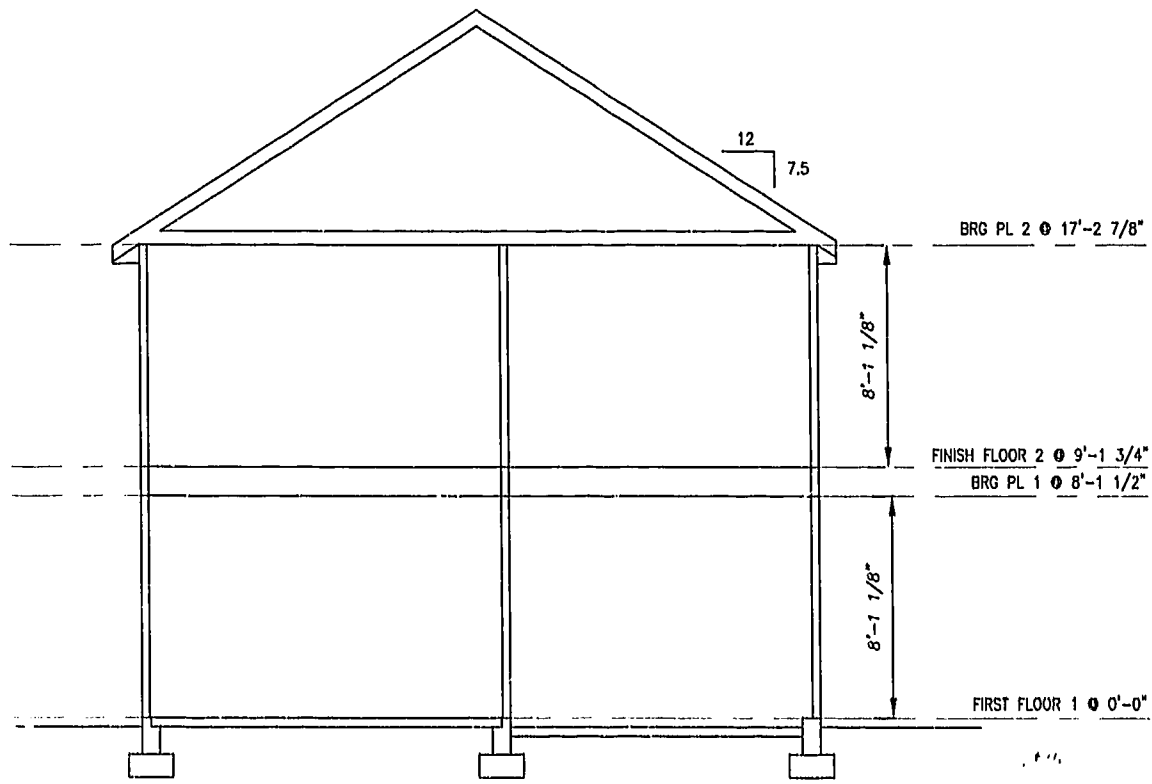
NOTE:
ALL BUILDING DIMENSIONS SHOWN ARE EXTERIOR DIMENSIONS



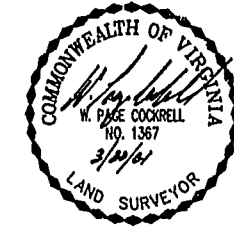
SECOND FLOOR



FIRST FLOOR



TYPICAL BUILDING SECTION



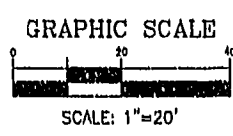
THE UNDERSIGNED CERTIFIES THAT THESE PLANS ARE ACCURATE AND COMPLY WITH THE PROVISIONS OF CODE OF VIRGINIA, SECTION 55-79.58.B AND THAT ALL UNITS OR PORTIONS THEREOF DEPICTED HEREON AND ALL COMMON ELEMENTS HAVE BEEN SUBSTANTIALLY COMPLETED.

SIGNED: *W. Page Cockrell*
W. PAGE COCKRELL, L.S.

EXHIBIT B-7

**SUPPLEMENTAL CONDOMINIUM PLAT
OF
CROMWELL RIDGE CONDOMINIUM
JAMES CITY COUNTY, VIRGINIA**

LEGEND
UNIT AREA



DATE: 01/26/01 SHEET 3 OF 5 SCALE: 1"=20'
PROJECT NO: 30807.00 DRAWN BY: SAA

VHIB Vanasse Hangen Brustlin, Inc.
Transportation Land Development Environmental Services
11832 Rock Landing Drive, Suite 203
Newport News, Virginia 23606
(757) 813-5386 • FAX (757) 813-7737

Williamsburg/James City County
1:26 PM
Recorded 22 day of March 2001
DOCUMENT # 01004937
By *Claudia H. ...*

PLAT RECORDED NO. 82 PAGE 88-92