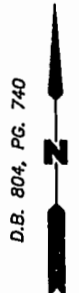


FUTURE ROUTE 5
VARIABLE R/W
R=1064.91'
L=101.03'

PHASE 8
0.471 ACRE

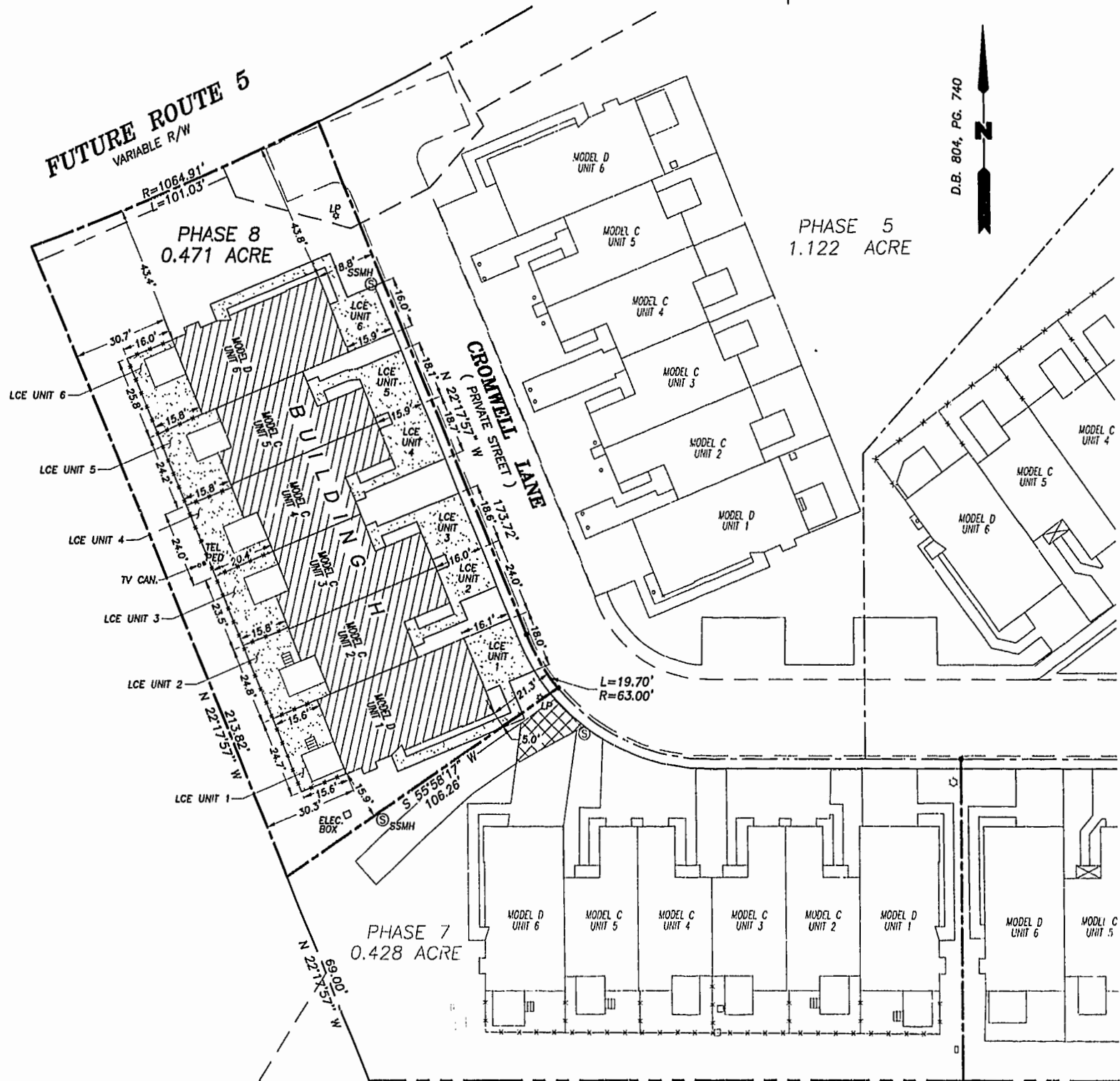
PHASE 5
1.122 ACRE

PHASE 7
0.428 ACRE



NOTES:

1. MERIDIAN BASED ON PLAT RECORDED IN D.B. 803, PAGE 740.
2. SEE SHEET 3 OF 4 FOR EXTERIOR BUILDING DIMENSIONS.
3. THE PORTION OF THE IMPROVEMENTS DESIGNATED AS A UNIT IS SUBJECT TO THE DEFINITION OF THE TERM "UNIT" IN THE DECLARATION. EXTERIOR WALLS, DIVIDING WALLS BETWEEN UNITS, AND COLUMNS OR LOAD BEARING MEMBERS WHICH SUPPORT MORE THAN ONE UNIT ARE NOT PART OF THE UNIT.
4. INTERIOR UNIT CONFIGURATIONS AND PARTITIONS AS DEPICTED HEREON ARE FOR ILLUSTRATION ONLY AND MAY NOT REPRESENT THE INTERIOR OF A UNIT AS ACTUALLY BUILT.
5. THE DESIGNATION COMMON ELEMENTS IS NOT INTENDED TO IMPLY THAT ADDITIONAL LAND IS A COMMON ELEMENT.
6. THE DESIGNATION UNIT AREA IS SUPERSEDED BY THE DEFINITION OF UNIT AREA IN THE DECLARATION AND IS NOT INTENDED TO IMPLY THAT THE COMMON ELEMENTS ARE UNIT AREA.
7. "LCE UNIT ____" DESIGNATES LIMITED COMMON ELEMENT TO UNIT INDICATED.



THE UNDERSIGNED CERTIFIES THAT THESE PLATS ARE ACCURATE AND COMPLY WITH THE PROVISIONS OF CODE OF VIRGINIA, SECTION 55-79.58.A AND THAT ALL UNITS OR PORTIONS THEREOF DEPICTED HEREON AND ALL COMMON ELEMENTS HAVE BEEN SUBSTANTIALLY COMPLETED.

SIGNED: *W. Page Cockrell*
W. PAGE COCKRELL, L.S.

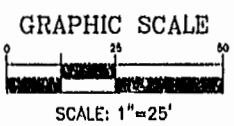
EXHIBIT B-7

SUPPLEMENTAL CONDOMINIUM PLAT
OF
CROMWELL RIDGE CONDOMINIUM

JAMES CITY COUNTY, VIRGINIA

DATE: 01/26/01	SHEET 2 OF 5	SCALE: 1"=25'
PROJECT NO: 30807.00	DRAWN BY: SAA	

VHIB Vanasse Hangen Brustlin, Inc.
Transportation Land Development Environmental Services
11832 Rock Landing Drive, Suite 703
Newport News, Virginia 23605
(757) 253-5386 • FAX (757) 813-0157



- LEGEND
- PROPERTY BOUNDARY LINE
 - - - PHASE LINE
 - ▨ UNIT AREA
 - ▤ LIMITED COMMON ELEMENT
 - COMMON ELEMENT

Williamsburg/James City County
 1:36 PM
 Rec'd 23 day of March 2001
 DOCUMENT # 010004937
Betty B. Woodruff Clerk
 By *Christie Woodruff* 2001

PLAT RECORDED IN
 P.D. NO. 80, PAGE 89-92