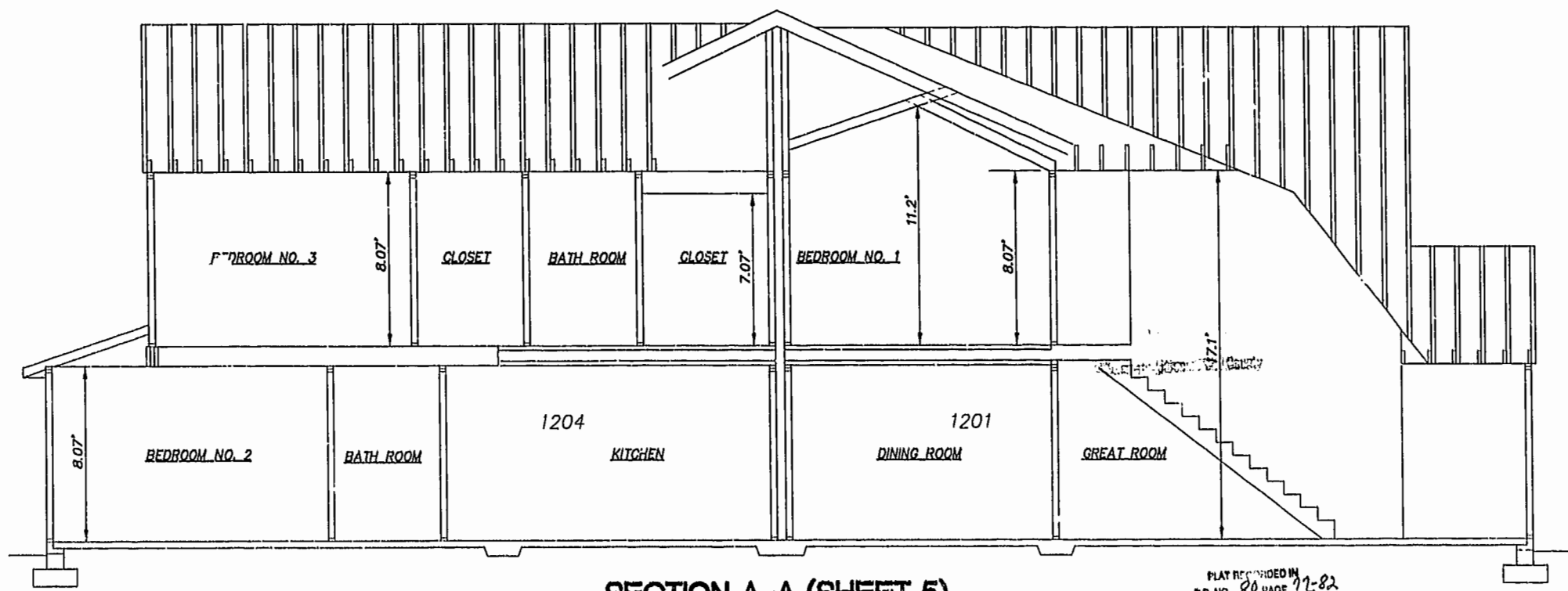


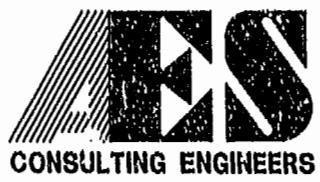
SECTION B-B (SHEET 5)



SECTION A-A (SHEET 5)

PLAT RECORDED IN P.D. NO. 80 PAGE 11-82

03.05.01-09.32 8395P126.DWG



5248 Olde Towne Road, Suite 1  
 Williamsburg, Virginia 23188  
 (757) 253-0040  
 Fax (757) 220-8994

PLAT OF CONDOMINIUM  
 WESTGATE AT WILLIAMSBURG,  
 A CONDOMINIUM  
 PHASE TWELVE  
 OWNED BY: 752 L.L.C.,  
 A VIRGINIA LIMITED LIABILITY COMPANY  
 CITY OF WILLIAMSBURG VIRGINIA



|     |      |                           |    |
|-----|------|---------------------------|----|
| No. | DATE | REVISION / COMMENT / NOTE | BY |
|     |      |                           |    |
|     |      |                           |    |
|     |      |                           |    |

|                       |                  |
|-----------------------|------------------|
| Designed<br>GTW/AUS   | Drawn<br>AWT/JFS |
| Scale<br>1" = 4'      | Date<br>2/13/01  |
| Project No.<br>8395-6 |                  |
| Drawing No.<br>6 OF 6 |                  |

Williamsburg James City County

11:45 AM  
 19 day of March 2001  
 A.D. Sebert  
 MISSY N. WOOLDRIDGE, CLERK OF CIRCUIT COURT