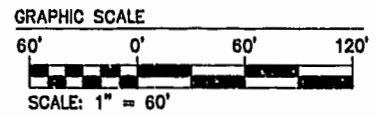
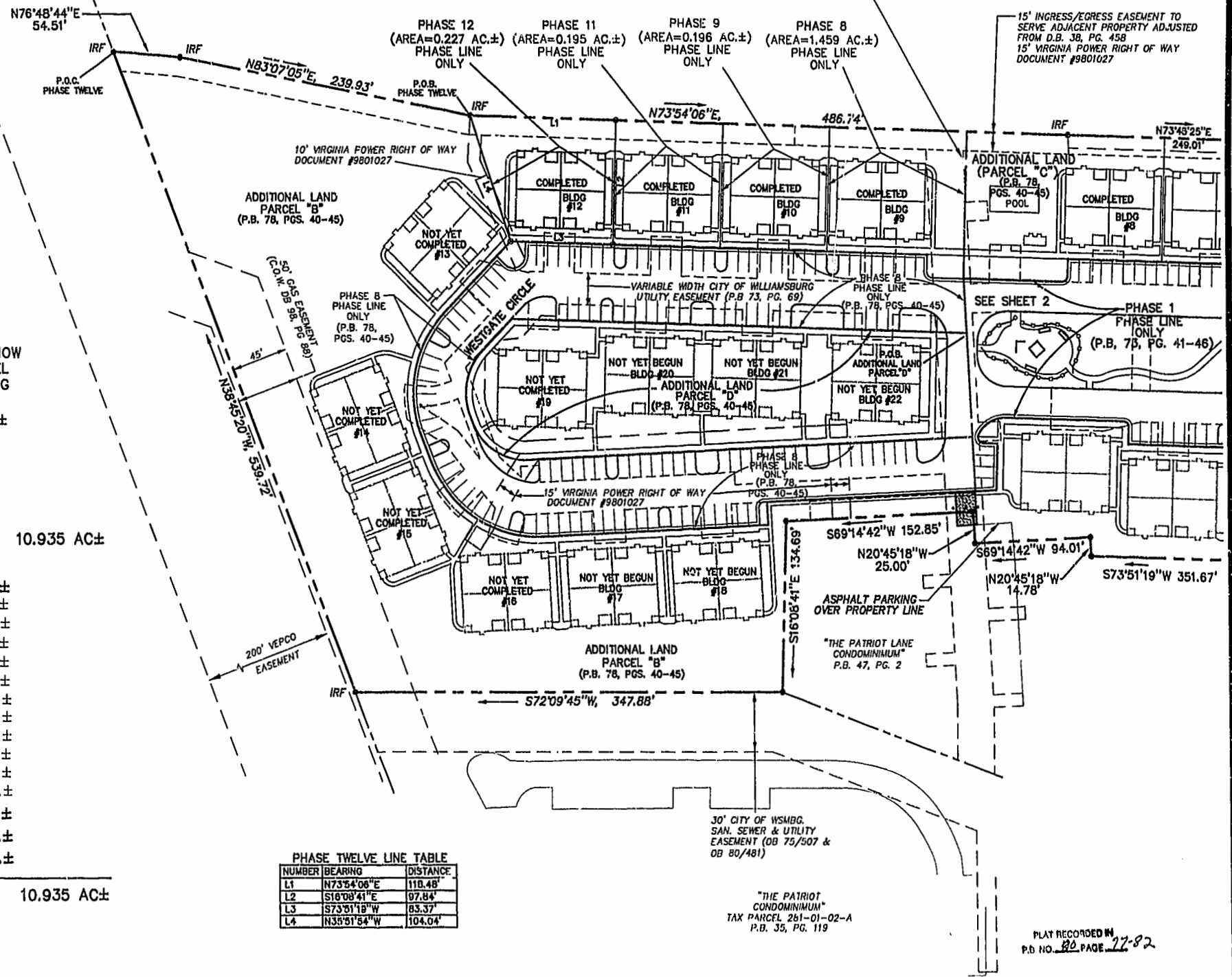


NOTE:
AT THE TIME OF THIS SURVEY
ROADS AND SIDEWALK ARE UNDER
CONSTRUCTION. (PROPOSED
LOCATION SHOWN). WATER &
& SANITARY SYSTEM ARE IN PLACE.



N OR F
WARBURTON & MAHONE ESTATE
TAX PARCEL 282-A-00'

VARIABLE WIDTH CITY OF WILLIAMSBURG
SAN. SEWER & UTILITY
EASEMENT (DB 75/507 &
DB 80/481)



NOTE:
THE AREAS OF PARCEL ONE AND PHASE ONE NOW
REFLECT THE PROPOSED SUBDIVISION OF PARCEL
ONE AS SHOWN BY A PLAT BY AES CONSULTING
ENGINEERS ENTITLED "PLAT OF SUBDIVISION
SHOWING PARCEL 1A CONTAINING 0.978 ACRES±
OWNED BY 752 L.L.C." DATED 11/22/2000.

AREA
TOTAL AREA PARCEL 1= 10.935 AC±

- PHASE TWELVE= 0.227 AC.±
- PHASE ELEVEN= 0.195 AC.±
- PHASE TEN= 0.222 AC.±
- PHASE NINE= 0.196 AC.±
- PHASE EIGHT= 1.459 AC.±
- PHASE SEVEN= 0.216 AC.±
- PHASE SIX= 0.343 AC.±
- PHASE FIVE= 0.235 AC.±
- PHASE FOUR= 0.200 AC.±
- PHASE THREE= 0.196 AC.±
- PHASE TWO= 0.195 AC.±
- PHASE ONE= 2.377 AC.±

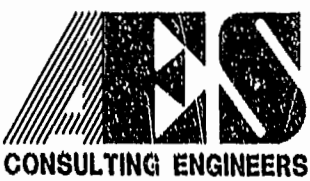
ADDITIONAL AREA (PARCEL "B")= 3.585 AC.±
ADDITIONAL AREA (PARCEL "C")= 0.396 AC.±
ADDITIONAL AREA (PARCEL "D")= 0.893 AC.±

TOTAL= 10.935 AC±

PHASE TWELVE LINE TABLE

| NUMBER | BEARING | DISTANCE |
|--------|-------------|----------|
| L1 | N73°54'06"E | 118.48' |
| L2 | S18°08'41"E | 97.84' |
| L3 | S73°51'19"W | 83.37' |
| L4 | N35°51'54"W | 104.04' |

8395P123.DWG 03.09.01--08:30 JFS



5248 Olde Towne Road, Suite 1
Williamsburg, Virginia 23188
(757) 253-0040
Fax (757) 220-8994

PLAT OF CONDOMINIUM
WESTGATE AT WILLIAMSBURG,
A CONDOMINIUM
PHASE TWELVE
OWNED BY: 752 L.L.C.,
A VIRGINIA LIMITED LIABILITY COMPANY
CITY OF WILLIAMSBURG VIRGINIA



| No. | DATE | REVISION / COMMENT / NOTE | BY |
|-----|----------|---------------------------|----|
| | 11/25/01 | 19 day of March 2001 | |
| | | | |
| | | | |
| | | | |

Designed GTW/ADS Drawn JFS
Scale 1"= 60' Date 2/13/01
Project No. 8395-6
Drawing No. 3 OF 6

PLAT RECORDED IN
P.D. NO. 82 PAGE 77-82