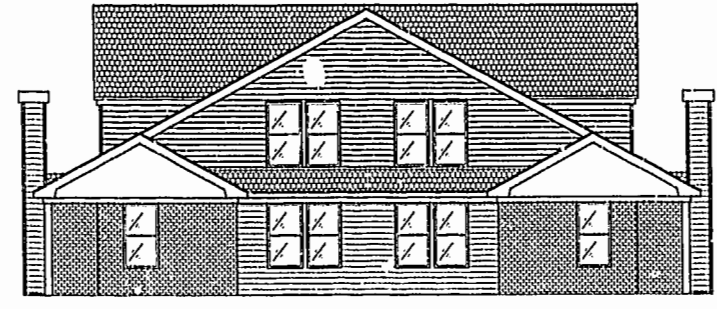
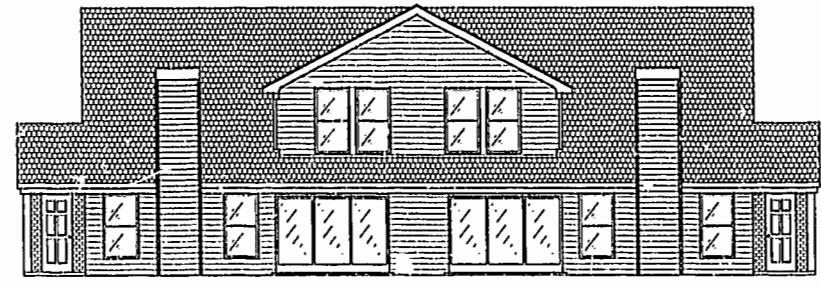
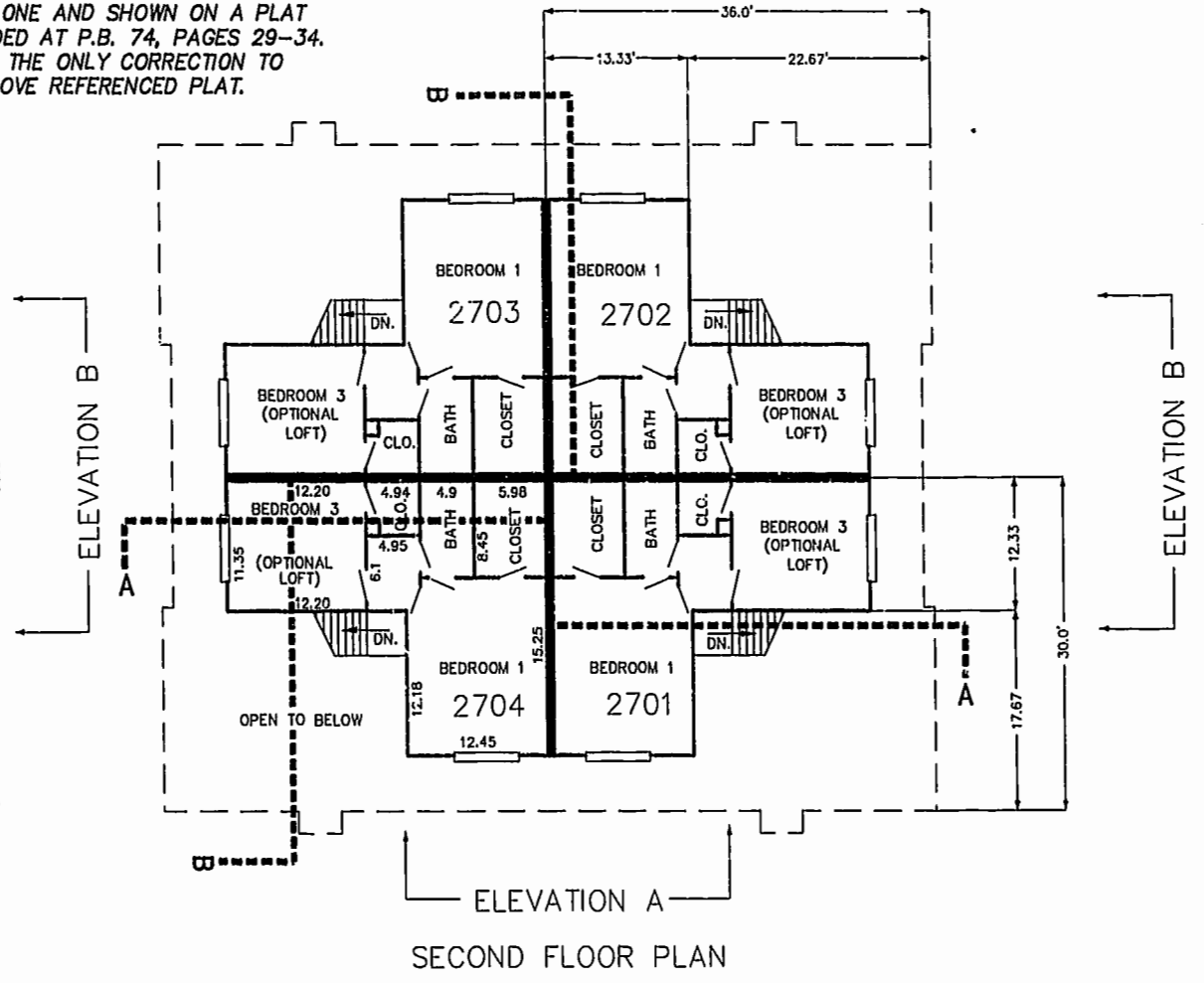
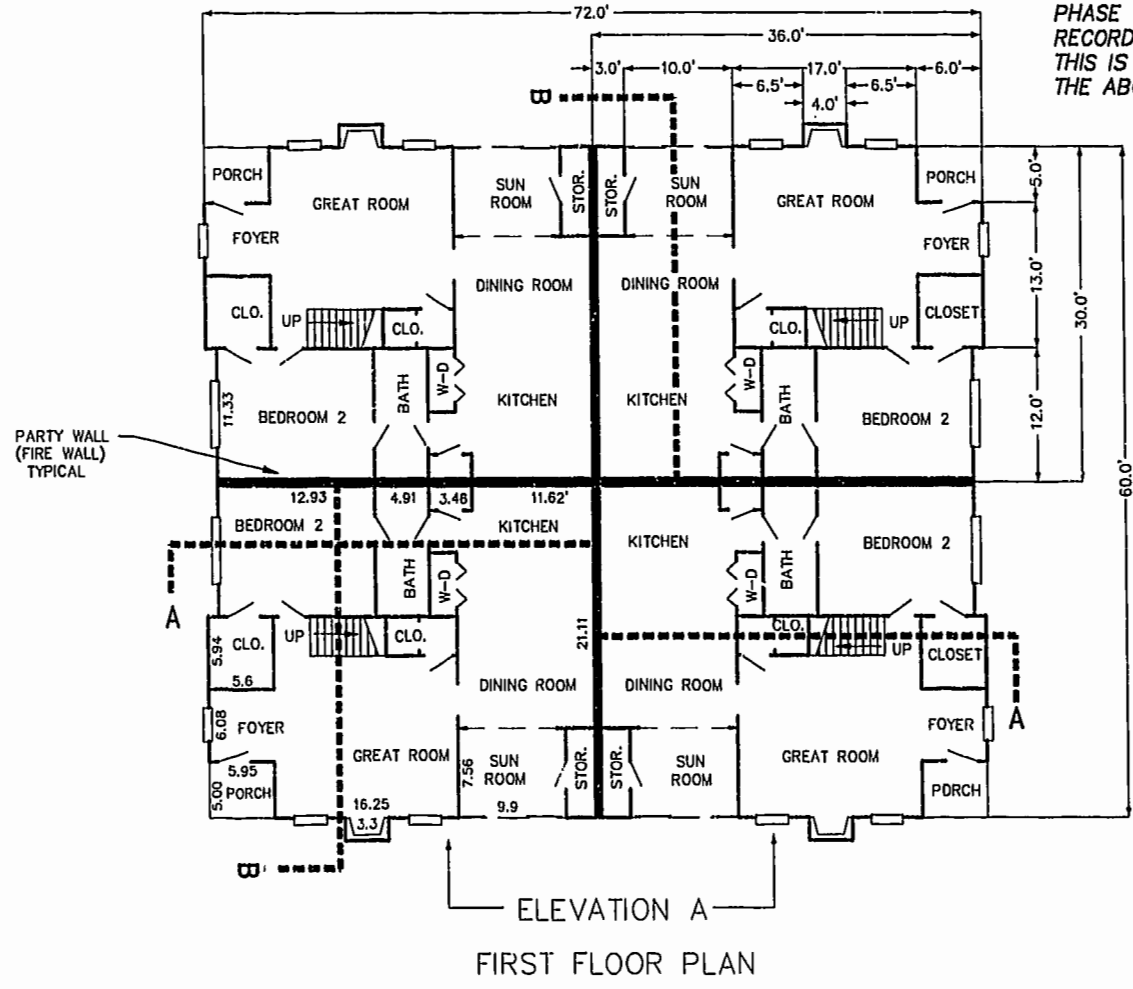
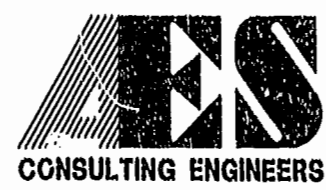


THIS PLAT OF CORRECTION ADJUSTS THE BOUNDARY OF PHASE ONE, WESTGATE AT WILLIAMSBURG, A CONDOMINIUM TO EXCLUDE 0.978 ACRES ERRONEOUSLY INCLUDED IN PHASE ONE AND SHOWN ON A PLAT RECORDED AT P.B. 74, PAGES 29-34. THIS IS THE ONLY CORRECTION TO THE ABOVE REFERENCED PLAT.



Williamsburg/James City County
 Received 11:21 AM 19 day of June 2001
 DOCUMENT # 010355
 Betsy N. Woolridge, Clerk
 PLAT RECORDED IN P.B. NO. 82 PAGE 7-76
 BETSY N. WOOLRIDGE, CLERK OF CIRCUIT COURT

83956R5.dwg 02.CS.01-13:19 JFS



5248 Olde Towne Road, Suite 1
 Williamsburg, Virginia 23188
 (757) 253-0040
 Fax (757) 220-8894

PLAT OF CORRECTION
 PLAT OF CONDOMINIUM
 WESTGATE AT WILLIAMSBURG,
 A CONDOMINIUM
 PHASE ONE
 OWNED BY: 752 L.L.C.,
 A VIRGINIA LIMITED LIABILITY COMPANY
 CITY OF WILLIAMSBURG VIRGINIA



No.	DATE	REVISION / COMMENT / NOTE	BY

Designed GTW/ADS	Drawn JFS
Scale 1" = 10'	Date 2/06/01
Project No. 8395-6	
Drawing No. 5 OF 6	