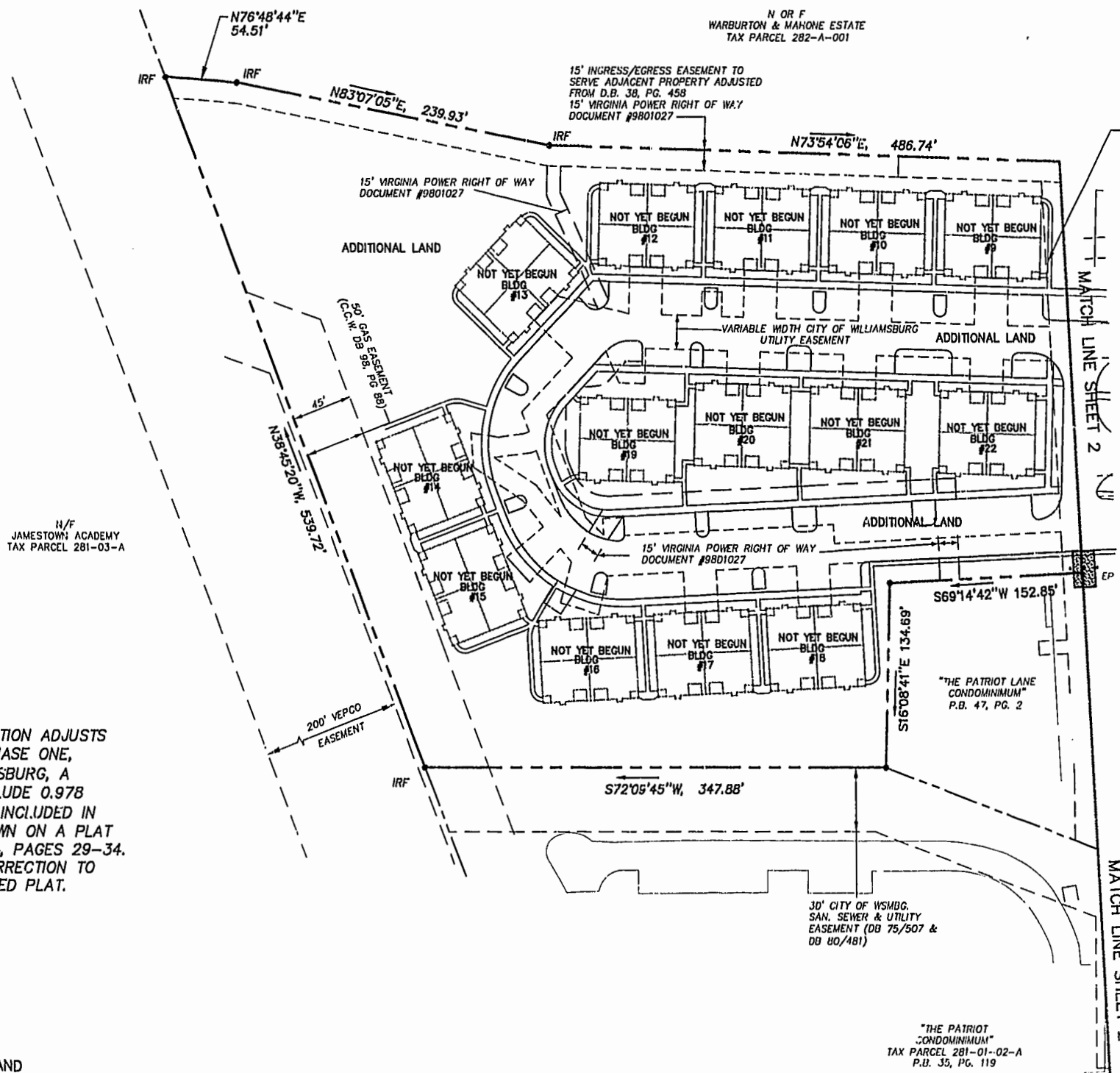
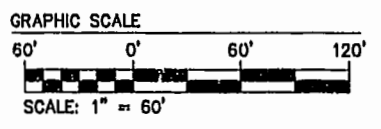
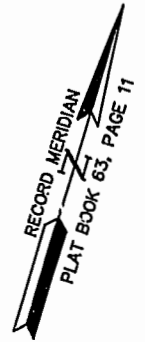


NOTE:
VARIABLE WIDTH CITY OF WILLIAMSBURG
SANITARY & UTILITY EASEMENT IS
SHOWN PER PLAT BY AES DATED 12/23/98.



N/F
JAMESTOWN ACADEMY
TAX PARCEL 281-03-A

VARIABLE WIDTH CITY OF WILLIAMSBURG
SAN. SEWER & UTILITY
EASEMENT (DB 75/507 &
DB 80/481)



AREA
PHASE ONE= 2.377 AC.±
ADDITIONAL AREA= 8.558 AC.±
TOTAL AREA PARCEL 1= 10.935 AC.±

THIS PLAT OF CORRECTION ADJUSTS
THE BOUNDARY OF PHASE ONE,
WESTGATE AT WILLIAMSBURG, A
CONDOMINIUM TO EXCLUDE 0.978
ACRES ERRONEOUSLY INCLUDED IN
PHASE ONE AND SHOWN ON A PLAT
RECORDED AT P.B. 74, PAGES 29-34.
THIS IS THE ONLY CORRECTION TO
THE ABOVE REFERENCED PLAT.

NOTE:
AT TIME OF SURVEY ROADS
ARE UNDER CONSTRUCTION AND
SIDEWALK CONSTRUCTION HAS
NOT BEGUN (PROPOSED LOCATION SHOWN).
WATER & SANITARY SYSTEM ARE IN PLACE.

"THE PATRIOT
CONDOMINIUM"
TAX PARCEL 281-01-02-A
P.B. 35, PG. 119

Williamsburg/James City County
11:21 AM
19 day of Decr 2001
010355
RETSY B. WOOLRIDGE, CLERK OF CIRCUIT COURT

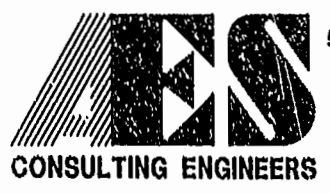
PLAT RECORDED IN
P.B. NO. 8 PAGE 76

PLAT OF CORRECTION
PLAT OF CONDOMINIUM
WESTGATE AT WILLIAMSBURG,
A CONDOMINIUM
PHASE ONE
OWNED BY: 752 L.L.C.,
A VIRGINIA LIMITED LIABILITY COMPANY
CITY OF WILLIAMSBURG VIRGINIA



No.	DATE	REVISION / COMMENT / NOTE	BY

Designed GTW/ADS	Drawn JFS
Scale 1" = 60'	Date 2/06/01
Project No. 8395-6	
Drawing No. 3 OF 6	



5248 Olde Towne Road, Suite 1
Williamsburg, Virginia 23188
(757) 253-0040
Fax (757) 220-8994

02.08.01-1.3.14 83956aR3.dwg JFS