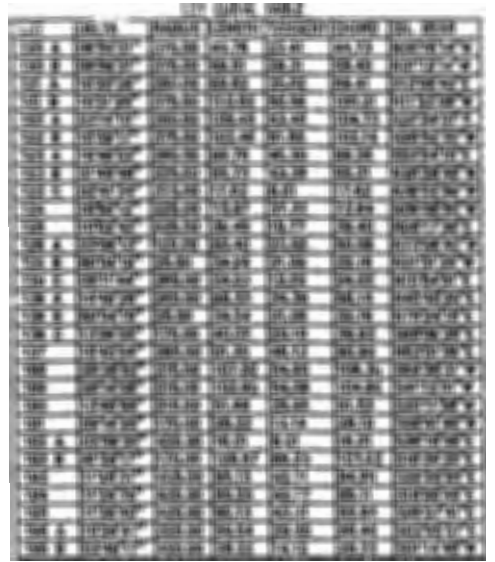
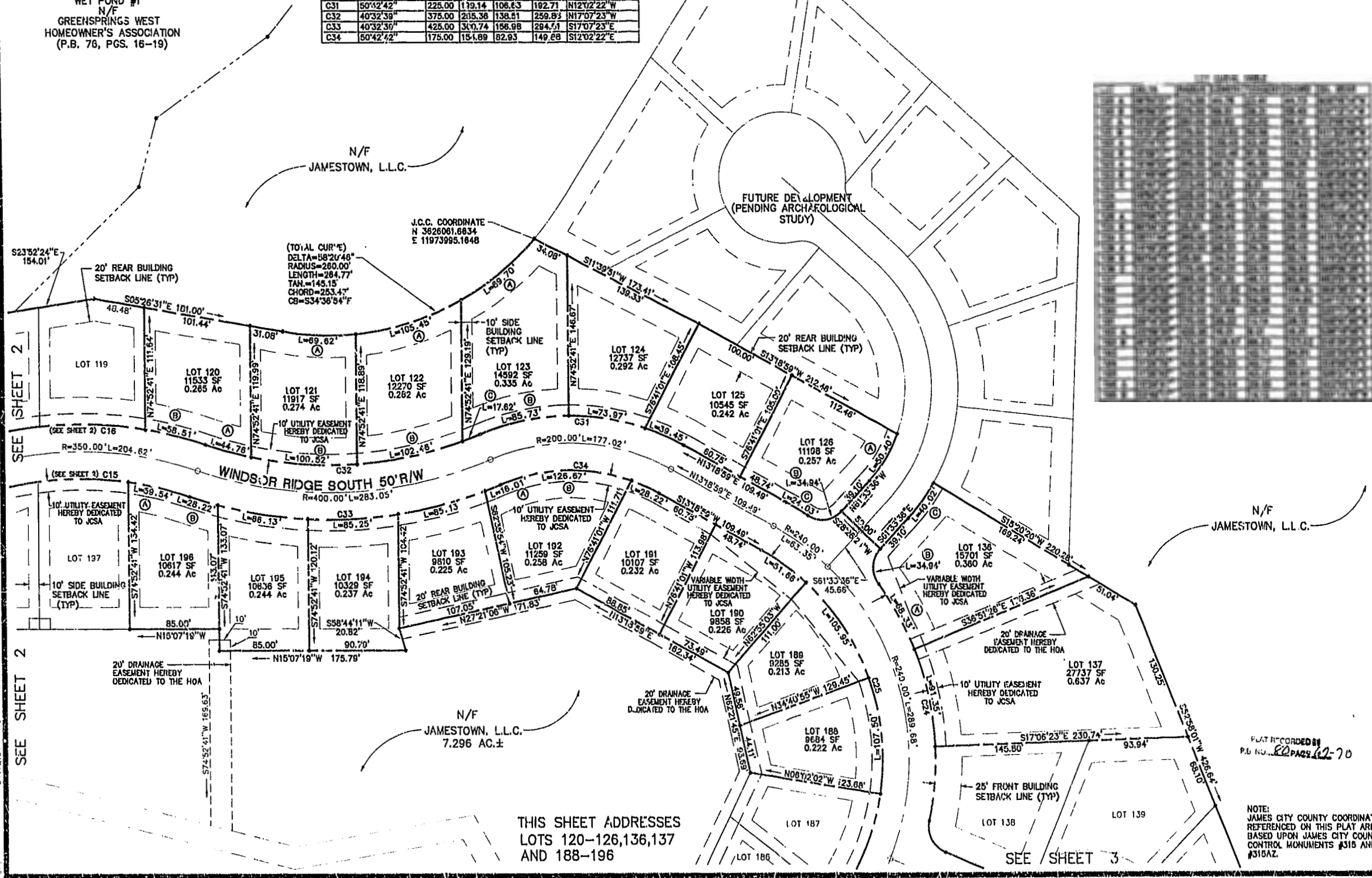
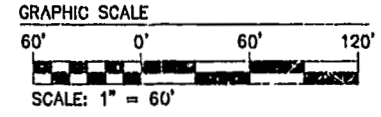
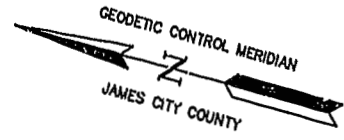


GREENSPRINGS WEST PHASE I
EXISTING SWM/BMP FACILITY
WET POND #1
N/F
GREENSPRINGS WEST
HOMEOWNER'S ASSOCIATION
(P.B. 76, PGS. 16-19)

NUMBER	DELTA	RADIUS	LENGTH	TANGENT	CHORD	CH. BEAR
C24	49°18'00"	285.00	228.02	121.61	221.05	N63°01'08"E
C25	121°54'53"	215.00	167.48	387.19	375.93	S74°19'25"W
C31	50°42'42"	225.00	179.14	108.43	192.71	N12°02'22"W
C32	40°32'39"	375.00	205.38	138.61	259.83	N17°07'23"W
C33	40°32'39"	425.00	347.74	186.98	284.51	S17°07'23"E
C34	50°42'42"	175.00	151.89	82.93	149.68	S12°02'22"E

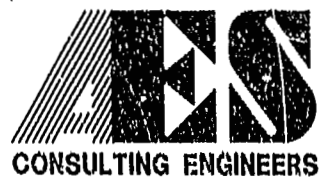


SEE SHEET 2
SEE SHEET 2
SEE SHEET 2

THIS SHEET ADDRESSES
LOTS 120-126, 136, 137
AND 188-196

PLAT RECORDED BY
P.B. NO. 82 PAGE 62-70

NOTE:
JAMES CITY COUNTY COORDINATES
REFERENCED ON THIS PLAT ARE
BASED UPON JAMES CITY COUNTY
CONTROL MONUMENTS #315 AND
#315A2.



5248 Old Towne Road, Suite 1
Williamsburg, Virginia 23188
(757) 253-0040
Fax (757) 220-8994

PLAT OF SUBDIVISION
AND BOUNDARY LINE ADJUSTMENT
GREENSPRINGS WEST
PHASE III
LOTS 118-126, 136-159 AND 180-201
BEING THE PROPERTY OF JAMESTOWN, L.L.C.
BERKELEY DISTRICT JAMES CITY COUNTY VIRGINIA



No.	DATE	REVISION / COMMENT / NOTE	BY
3	1/12/01	REVISED EASEMENTS PER JCSCA COMMENTS	JFS
2	12/8/00	REVISED TO SHOW SIGN EASEMENTS PER OWNER COMMENTS	JFS
1	11/7/00	REVISED LOTS PER OWNER COMMENTS	JFS

Designed	Drawn
HWP/CWG	JFS
Scale	Date
1"=60'	9/8/00
Project No.	
8656-4	
Drawing No.	
4 OF 4	