

COLLEGE OF WILLIAM & MARY

IRON BOUND

M.B. 71 - PG. 73



(APPROX. R/W)
R O A D

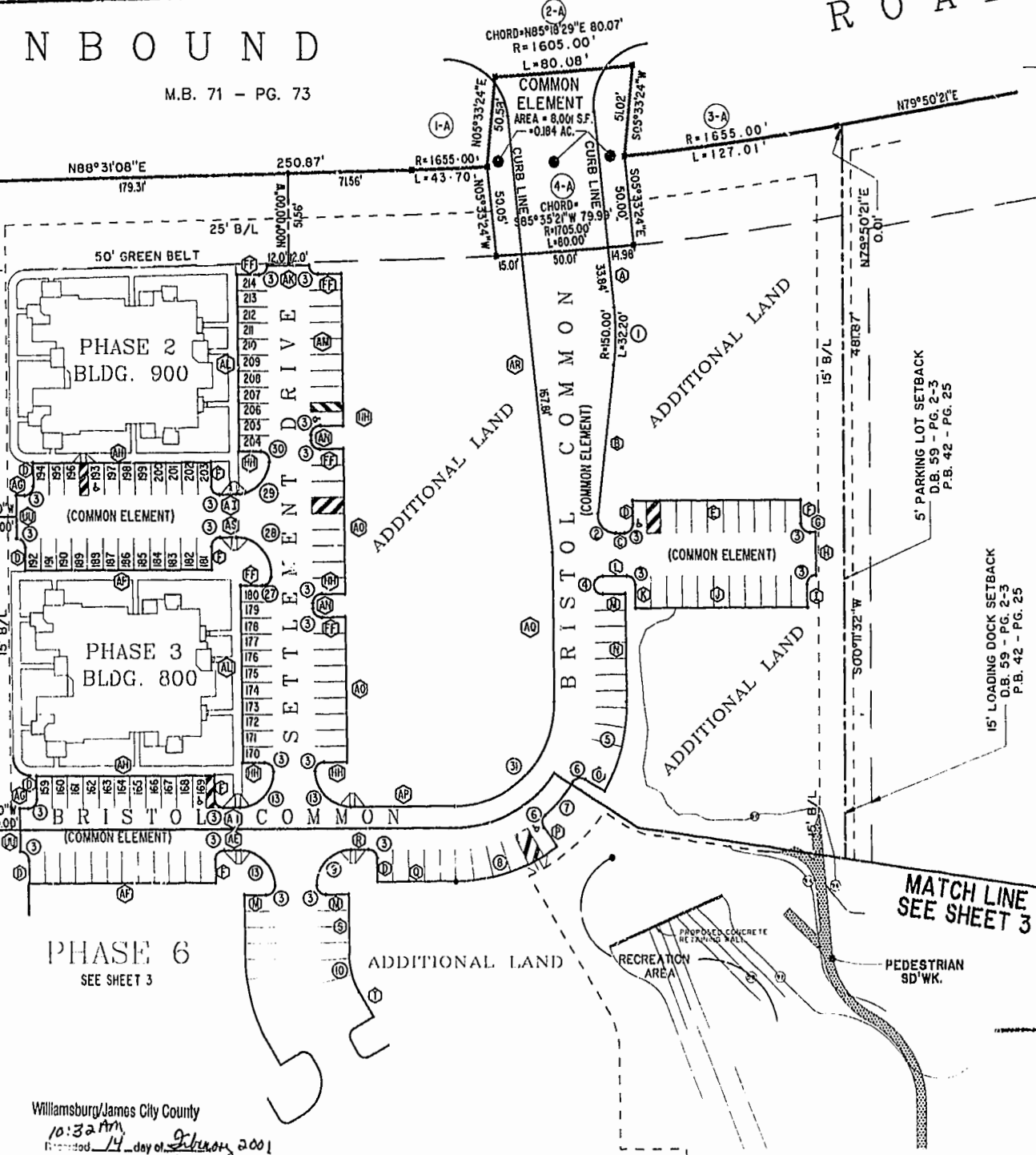
T.P. 372-(OA)-00-028
NOW OR FORMERLY
JEROME & EVELYN RANDOLPH
(D.B. 30, PG. 470)
ZONE: RM-2

T.P. 372-(OA)-00-030
NOW OR FORMERLY
JEROME & EVELYN RANDOLPH
(D.B. 37, PG. 379)
ZONE: RM-2

T.P. 372-(05)-00-001
NOW OR FORMERLY
CHESAPEAKE MEDIA, INC.
(D.B. 74, PG. 121)
(M.B. 42, PG. 25)
ZONE: B-2 CONDITIONAL

MATCH LINE
SEE SHEET 3
40' R/W
ROLAND STREET

MATCH LINE
SEE SHEET 3



PHASE 6
SEE SHEET 3

Williamsburg/James City County
10:32 AM
Recorded 14 day of February 2001
DOCUMENT # D10184
[Signature] Clerk
RETSY D. WOOLLIN, CLERK OF CIRCUIT COURT

BRISTOL COMMONS
A CONDOMINIUM COMMUNITY
PHASE SIX
FOR
KEY GROUP, LLC
CITY OF WILLIAMSBURG, VIRGINIA

PLAT RECORDED IN
PL. 82 PAGE 39-42

Hassell & Folkes, P.C. Engineers Surveyors Planners Chesapeake, VA 23320 (757) 547-9531	SIZE	CONTRACT NO	DISK/BOX	FILENAME	REV
	C	90062	1230/15	BRISTOL.CDWG	
SCALE: 1"=50'		DATE: 02/01/01		SHEET 2 of 4	