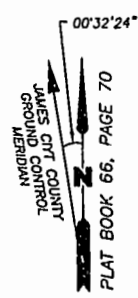


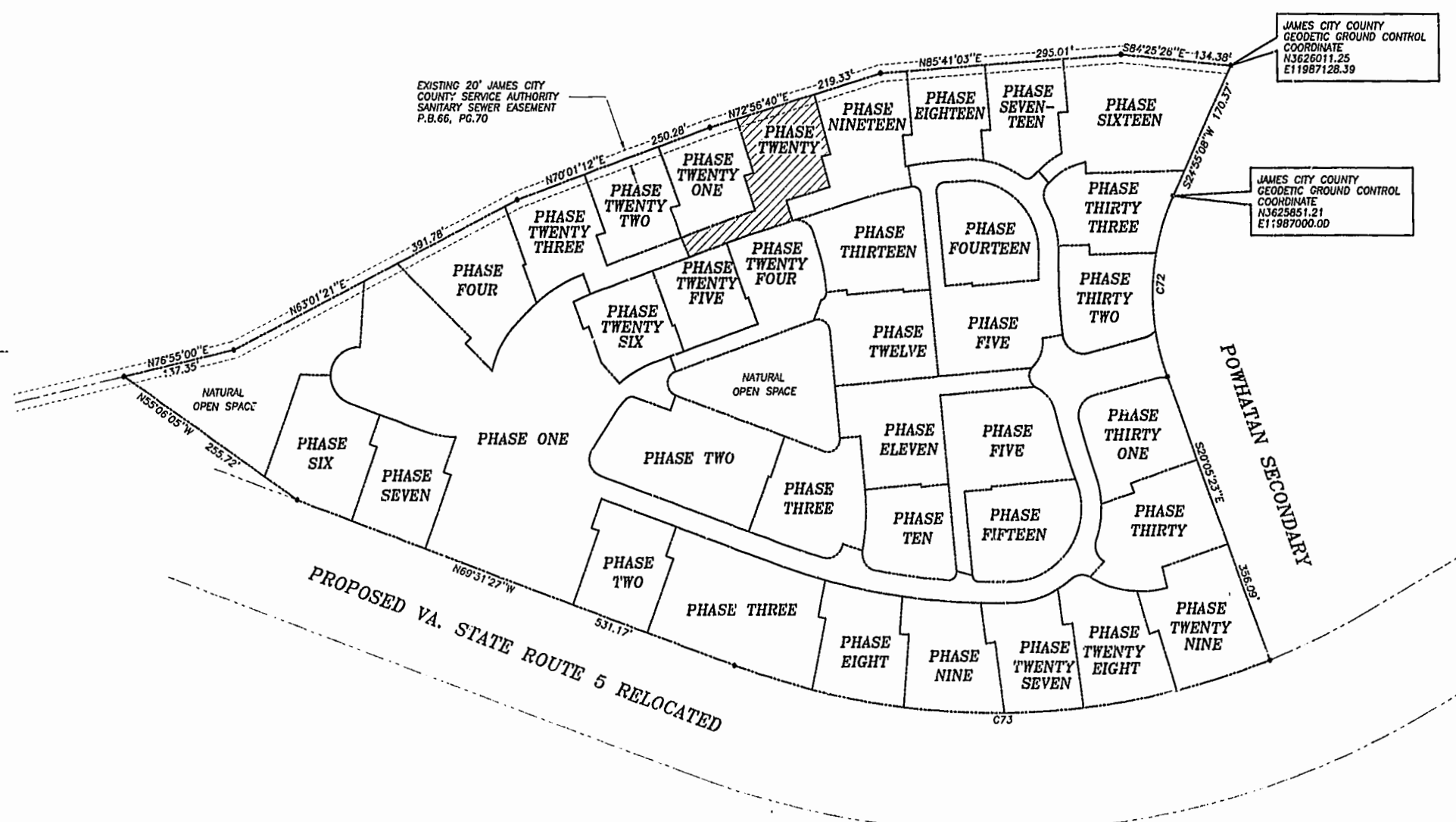
AMENDED PLAT OF SUBDIVISION  
**WATERFORD**  
 AT  
**POWHATAN SECONDARY**  
 PHASE TWENTY  
 BERKELEY DISTRICT  
 JAMES CITY COUNTY, VIRGINIA

DATE: 10/21/98 SHEET 2 OF 3 SCALE: 1"=100'  
 PROJECT NO: 97-008 DRAWN BY: SJB

**SA** SLEDD & ASSOCIATES, P.C.  
 ENGINEERS PLANNERS SURVEYORS  
 11832 ROCK LANDING DRIVE, SUITE 203  
 NEWPORT NEWS, VIRGINIA 23606  
 (757) 873-3366



NOW OR FORMERLY  
 POWHATAN ENTERPRISES, INC.



JAMES CITY COUNTY  
 GEODETIC GROUND CONTROL  
 COORDINATE  
 N3626011.25  
 E11987128.39

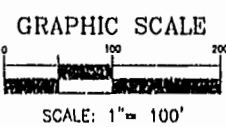
JAMES CITY COUNTY  
 GEODETIC GROUND CONTROL  
 COORDINATE  
 N3623851.21  
 E11987000.00



PROPOSED VA. STATE ROUTE 5 RELOCATED

**CURVE DATA**

NUMBER	DELTA	RADIUS	LENGTH	TANGENT	CHORD	CHORD BEARING
C72	45°00'31"	280.00'	219.95'	116.00'	214.34'	S02°24'52"W
C73	41°26'14"	924.91'	668.91'	349.84'	654.43'	S89°25'26"W



PLAT RECORDED IN  
 P.B. NO. 80 PAGE 36-38

Williamsburg/James City County  
 Recorded 12:15 PM day of February 2001  
 DOCUMENT # 010002204  
 HETSY B. WOOLPITZ, CLERK OF CIRCUIT COURT